

L E A V E Y O U R M A R K

# KELME 2024SS TEAMWEAR



KELME  
卡尔美体育



instagram



Sina Weibo



WeChat Video  
Channel

YOUTUBE : KELME ASIA OFFICIAL  
TWITTER : KELME ASIA OFFICIAL  
FACEBOOK: KELME ASIA OFFICIAL  
[WWW.KELMECHINA.COM/EN/](http://WWW.KELMECHINA.COM/EN/)



СпортЭкипЦентр   
s-ekip.ru экипируйся выгодно!

# WORLDWIDE

## 2024SS

作为全球知名的体育用品公司，卡尔美已积累了60余年的品牌历史，具备丰富的专业足球基因。品牌累计为约60%的西甲和西甲俱乐部进行了赞助合作。除此之外，近年来还为英超、俄超以及其他国际顶级体育俱乐部提供专业的足球装备。

卡尔美同时还是赞助最多中国职业足球俱乐部的品牌商，赞助范围涵盖女超、中甲、中乙等职业联赛。

如上所述，卡尔美品牌尤其具有深厚的西班牙足球基因，如中国球员武磊曾效力的皇家西班牙人足球俱乐部，以及自2020年起，沃特福德足球俱乐部皆为卡尔美的国际赞助合作伙伴。

2023年卡塔尔亚洲杯是卡尔美与亚足联（AFC）里程碑式合作，作为“历史最强”亚洲杯展现了亚洲球队不可小觑的实力，为世界足球带来了独属于亚洲足球的无限活力与热情，在2024年，卡尔美还将携手亚足联在U23亚洲杯、室内五人制亚洲杯等赛事上展现亚洲风采！

在品牌辉煌发展的历程中，曾为1992年巴塞罗那奥运会和西班牙代表团全项目品类装备提供了赞助。1994-1998年期间与皇家马德里俱乐部达成官方合作，还力推了网球运动员马丁内斯在1994年成为了首个夺得温网冠军的西班牙女选手并且带领卡尔美专业自行车队夺得了2001年环法赛事的冠军。此外，品牌还是2019年世界军人运动会和2021陕西全运会以及全国多个省市运动会的官方合作伙伴。多年来，卡尔美始终坚持以足球为核心，多品类全方位发展，除了在国际运动品牌独占一席，也已成为了中国足球领域的领军品牌。

As a world-renowned sporting goods company, KELME has accumulated more than 60 years of brand history and heritage, especially with a wealth of professional football DNA. The brand has a cumulative sponsoring partnership with about the 60% of the La Liga First and Second Division historical clubs. Moreover, in recent years KELME also provided professional football equipments to the Premier League clubs, the Russian Super League clubs and other top international sports clubs as well.

Likewise, KELME sponsored most of the Chinese Professional Football clubs, the scope covers the China Women's Super League clubs, Chinese League One clubs, China League Two clubs and among others.

As mentioned above, KELME especially has a deep Spanish football heritage, such as the La Liga club RCD. Espanyol that Chinese player Wu Lei ever belonged to, as well as England club Watford FC are both KELME's international sponsoring partners.

The 2023 AFC Asian Cup in Qatar marks a milestone collaboration between KELME and Asian Football Confederation (AFC). As the "strongest in history", the 2023 Asian Cup showcased the undeniable strength of Asian teams and brought infinite vitality and passion unique to Asian football to the world stage. In 2024, KELME will continue to join hands with AFC to showcase Asian flair at competitions including the AFC U23 Asian Cup and AFC Futsal Asian Cup.

In the course of the brand's brilliant development, KELME sponsored the 1992 Barcelona Olympic Games Committee and the Spanish delegation's all-project equipment categories, also reached an official partnership with Real Madrid F.C. from 1994-1998, and promoted the tennis player Martínez to become the first Spanish woman to win Wimbledon title in 1994; and even led the KELME Professional Cycling team to the Tour de France 2001 championship. In addition, the brand is the 2019 World Military Games and the 2021 Shaanxi National Games and other high level of sports events' official partner. Over the years, KELME has always adhered to the core of football, multi-category and all-round development, beside of having settle as an international branding, it also became a leading brand in the field of Chinese football.





KELME

ASIA

FEDERATIONS



ASIAN FOOTBALL CONFEDERATION



AFC ASIAN CUP QATAR



AFC WOMEN'S ASIAN CUP

SPAIN

FEDERATIONS



FEDERACIÓN DE FÚTBOL DE LA REGIÓN DE MURCIA



REAL FEDERACIÓN MILLENSE DE FÚTBOL

FOOTBALL



RCD ESPANYOL LA LIGA HYPERMOTION

FUTSAL



SE PENYA INDEPENDENT SEGUNDA RFEF



RACING CARTAGENA MAR MENOR FC SEGUNDA RFEF



JIMBEE CARTAGENA LNF5



INDUSTRIAS SANTA COLOMA LNF5



CD UMA ANTEQUERA LNF5 SEGUNDA



STV ROLDÁN FSF 1ª DIVISIÓN FEMENINA



MELILLA TORREBLANCA 1ª DIVISIÓN FEMENINA

BASKETBALL



PICKEN CLARET LIGA FEMENINA CHALLENGE



CB L'HORTA GODELLA LIGA LES PLATA

ESPORTS



REBELS GAMING SUPERLIGA VP



OXYGEN GAMING SUPERLIGA SEGUNDA VP

ARGENTINA

FEDERATIONS



CONFEDERACIÓN ARGENTINA DE BASQUET



LIGA NACIONAL DE BASQUETBOL

FOOTBALL



SAN MARTÍN DE TUCUMÁN PRIMERA B NACIONAL

UNITED KINGDOM

FOOTBALL



WATFORD FC SKY BET CHAMPIONSHIP



MAIDENHEAD UNITED NATIONAL LEAGUE



WEALDSTONE FC NATIONAL LEAGUE



SCUNTHORPE UNITED FC NATIONAL LEAGUE

PORTUGAL

FOOTBALL



BOAVISTA FC PRIMEIRA LIGA



CD FEIRENSE SEGUNDA LIGA



FC OLIVEIRA DO HOSPITAL TERCERA LIGA

FEDERATIONS



FEDERAÇÃO DE PATINAGEM DE PORTUGAL

CHINA

FOOTBALL



DONGGUAN GUANJIAN FC CHINA LEAGUE 1



GUANGXI BAOTUN FC CHINA LEAGUE 1



JIANXI LIANSHENG FC CHINA LEAGUE 1



SHENYANG URBAN FC CHINA LEAGUE 1



NANJING CITY FC CHINA LEAGUE 1



SHANGHAI JIADING FC CHINA LEAGUE 1



SUZHOU DONGWU FC CHINA LEAGUE 1



GUANGZHOU FC CHINA LEAGUE 1



DANDONG TENGYU FC CHINA LEAGUE 1



YUNNAN YUKUN FC CHINA LEAGUE 2



SHANGYU PTEROSAUR FC CHINA LEAGUE 2

BOSNIA AND HERZEGOVINA

FOOTBALL



BOSNIA AND HERZEGOVINA FOOTBALL FEDERATION



FK BORAC BANJA LUKA M.TEL PREMIER LIGA



FK IGMAN KONJIC M.TEL PREMIER LIGA



NK SIROKI BRJUG M.TEL PREMIER LIGA



KK BORAC BANJA LUKA PRVESTVO BIH

BASKETBALL

RUSSIA

FOOTBALL



URAL YEKATERINBURG PREMIER LIGA



FAKEL VORONEZH PREMIER LIGA



NETEKHIMIK NIZHNEKAMSK 1. DIVISION



FK LENINGRADETS 1. DIVISION



FK YENISEY KRASNOYARSK 1. DIVISION



FK SIVIR NOVO-SIBIRSK 2. DIVISION



UKHTA RUSSIAN FUTSAL SUPERLEAGUE



SIBIRYAK RUSSIAN FUTSAL SUPERLEAGUE



SIB-TRANSIT NOVOKUZNETSK RUSSIAN FUTSAL SUPERLEAGUE



BC ZENIT ST PETERSBURGO VTB UNITED LEAGUE



LEBANESE FOOTBALL ASSOCIATION



AL-AHEH LEBANESE PREMIER LEAGUE



BEIRUT LEBANESE PREMIER LEAGUE



AL-ANSAR FC LEBANESE PREMIER LEAGUE



MACARTHUR FC ALEAGUE

AUSTRALIA

FOOTBALL

HONDURAS

FOOTBALL



REAL CLUB DEPORTIVO ESPAÑA LIGA NACIONAL CLAUSURA

FEDERATIONS



SERBIA REFEREE FEDERATION

FOOTBALL



FK VOJVODINA NOVI SAD SUPER LIGA SRBIE

URUGUAY

FOOTBALL



BOSTON RIVER PRIMERA DIVISIÓN APERTURA



ALBION FC LIGA DE ASCENSO



CLUB ATLÉTICO RENTISTAS LIGA DE ASCENSO

GUATEMALA

FOOTBALL



COMUNICACIONES FÚTBOL CLUB LIGA GUATEMALA CLAUSURA



CSD XELAJU MC LIGA GUATEMALA CLAUSURA



LEBANESE FOOTBALL ASSOCIATION

FOOTBALL



CHORNOMORETS ODESSA UKRAINIAN PREMIER LEAGUE



FK MIRNA UKRAINIAN PREMIER LEAGUE



NK VERES RIVNE UKRAINIAN PREMIER LEAGUE



U.C.S.A. KYIV UKRAINIAN SECOND LEAGUE



MFC HIT KYIV EXTRA LEAGUE

FUTSAL

MONGOLIA

FEDERATIONS



MONGOLIAN FOOTBALL FEDERATION

FOOTBALL



ENNPPi SC EGYPTIAN PREMIER LEAGUE



ETIHAD ALEXANDRIA SC EGYPTIAN PREMIER LEAGUE



PETROJET SC EGYPTIAN SECOND DIVISION



SUEZ CANAL SC EGYPTIAN SECOND DIVISION



AL-AHLY VOLLEYBALL SUPER LEAGUE

VOLLEYBALL

THAILAND

FOOTBALL



UTHAI THANI FC THAI LEAGUE



BURIRAM UNITED THAI LEAGUE



CHIANGMAI FC THAI LEAGUE 2



AYUTTHAYA UNITED THAI LEAGUE 2

CHILE

FOOTBALL



DEPORTES CONCEPCIÓN SEGUNDA CHILE

FOOTBALL



AL-GHARAFÁ SC QATAR STARS LEAGUE

FOOTBALL

TAIWAN

FOOTBALL



TAIPEI DRAGONS TAIWAN FOOTBALL PREMIER LEAGUE



TAINAN CITY TAIWAN FOOTBALL PREMIER LEAGUE

FOOTBALL



THESPA GUNMA J2 LEAGUE

FUTSAL



LIGAREVIA KATSUSHIKA F. LEAGUE DIVISION 2

BASKETBALL



VINCEDOR HAKUSAN B LEAGUE DIVISION 2

BASKETBALL



SAGA BALOONERS B LEAGUE

KOREA

FOOTBALL



GWANGJU FC K-LEAGUE 1



GIMCHEON SANGMU K-LEAGUE 1



BUCHEON FC K-LEAGUE 2

UZBEKISTAN

FOOTBALL



NASAF QARSHI O'ZBEKISTON SUPERLIGASI



SHURTAN GUZAR UZBEKISTAN PRO LIGA

FOOTBALL



MACCABI PETAH TIKVA UGAT HA'AL

FOOTBALL

PANAMA

FOOTBALL



CD ÁRABE UNIDO LIGA PANAMENA DE FÚTBOL APERTURA



PERSIK KEDIRI LEAGUE 1 INDONESIA

CATALOGUE

# 01 TEAM KITS

01-16 TEAM KITS

# 03 TRAINING KITS

53-62 POLO

63-72 T-SHIRT/VEST

73-74 SHORTS

75-92 TRAINING TEAM KITS

93-94 TRACKSUIT

95-104 TRAINING JACKET/PULLOVER/SWEATSHIRT

105-111 TRAINING PANTS

112-112 SKIRT/CULOTTES/WOMEN'S PANTS

113-118 TRAINING TIGHT

# 02 FOOTBALL KITS

17-46 FOOTBALL SET/SHIRT/SHORTS/BIB

47-52 GK KITS/REFEREE

# 04 BASKETBALL KITS

119-126 BASKETBALL KITS

# 05 ATHLETIC, VOLLEYBALL, PING PONG, BADMINTON, CYCLING

127-136 ATHLETIC, VOLLEYBALL,  
PING PONG, BADMINTON,  
CYCLING

# 06 DOWN JACKET AND VEST

137-144 DOWN JACKET AND VEST

# 08 SPORTING LIFE

155-160 POLO / T-SHIRT

161-164 PANTS / SHORTS

165-169 WOVEN JACKET

170-172 KNITTED JACKET

172-178 FUNCTIONAL JACKET / DOWN JACKET  
/ SKI JACKET / DOWN VEST

# 10 SHOES

227-232 OUTSOLE FAMILY

233-260 FOOTBALL SHOES/FUTSAL SHOES

261-272 SPORTS/CASUAL SHOES

273-275 BASKETBALL SHOES

276-278 SLIPPERS / CASUAL SHOES

# 07 PADDED JACKET AND VEST

145-154 PADDED JACKET AND VEST

# 09 ACCESSORIES

179-190 BAG/LUGGAGE

191-200 BALL

201-205 GLOVES/NECK GAITER

205-210 HAT/CAP/TOWEL/BOTTLE  
/PROTECTION ACCESSORIES

211-218 SOCKS/SHIN GUARD

219-224 EQUIPMENT

01-16



TRACK KITS

RETRO COLLECTION

■ 8351TX1165

T-SHIRT FABRIC: 100% POLYESTER

ADULTS:  
SIZE: S-5XL



100  
White

000  
Black

■ 8351PL1053

POLO FABRIC: 100% POLYESTER

ADULTS:  
SIZE: S-5XL



516  
Dark Purple

Black

100  
White

■ 8361WT1085

WOVEN JACKET FABRIC: 100% NYLON

ADULTS:  
SIZE: S-5XL



516  
Dark Purple

245  
Classic Gray

■ 8361TT1022

SWEATSHIRT FABRIC: 85% COTTON, 15% POLYESTER

ADULTS:  
SIZE: S-5XL



000  
Black

100  
White

■ 8361WT1084

KNITTED JACKET FABRIC: 100% POLYESTER

ADULTS:  
SIZE: S-5XL



500  
Purple

Black

■ 8351DK1097

WOVEN SHORTS FABRIC: 94% POLYESTER, 6% SPANDEX

ADULTS:  
SIZE: S-5XL



000  
Black

Black

000  
Black

Black

■ 8361CK1068

KNITTED PANTS SLIM FITTED FABRIC: 100% POLYESTER

ADULTS:  
SIZE: S-5XL



000  
Black

Black





■ 8351TX1170

T-SHIRT FABRIC:72% COTTON,28% POLYESTER

ADULTS:  
SIZE: 2XS-5XL



■ 8351TX1171

T-SHIRT FABRIC:72% COTTON,28% POLYESTER

ADULTS:  
SIZE: 2XS-5XL



■ 8351TX1145

T-SHIRT FABRIC:88% POLYESTER,12% SPANDEX

ADULTS:  
SIZE:S-7XL



■ 8351PL1085

POLO FABRIC:86% NYLON,14% SPANDEX

ADULTS:  
SIZE:S-5XL



■ 8361TT1023

SWEATSHIRT  
FABRIC:87% POLYESTER,13% SPANDEX

ADULTS:  
SIZE:S-5XL



AFC ASIAN CUP 2023 GIFT BOX

■ 8301WL5062  
SIZE:FREE SIZE(38\*30\*3.5CM)

■ 8301WL5063  
SIZE:FREE SIZE(38\*30\*5.5CM)



600  
Red

■ 8301WJ5007

SCARF  
FABRIC:94% POLYESTER,6% SPANDEX  
SIZE:FREE SIZE(140\*17CM)



609  
Wine Red

# DRAGON SCALE SERIES



**Short Sleeve Football Set**  
Adults 8451ZB1253



**Training Vest**  
Adults 8451BX1024



**Polo Shirt**  
Adults 8451PL1064



**Training Sweatshirt**  
Adults 8461TT1029



**Training Jacket**  
Adults 8461WT1093



**Rain Jacket**  
Adults 8461WT1094



**Training Pants**  
Adults 8461CK1076







**Long Sleeve Football Shirt**  
Adults 8551TX1144



**Woven Jacket**  
Adults 8561W11063



**1/2 Zippered Training Pullover With Padding**  
Adults 8561TT1016



**Training Jacket**  
Adults 8561W11064



**Training T-Shirt**  
Adults 8151ZB1007  
Kids 8151ZB3007



**Training Jacket**  
Adults 8061WT1009  
Kids 8061WT3002



**Half-Zipper Training Jacket**  
Adults 8061TT1007  
Kids 7361TT3013



**Rain Jacket**  
Adults 8061WT1005  
Kids 8061WT3001



**Short Sleeve Football Shirt**  
Adults 7351TX1092  
Kids 7351TX3093



**Training Pants**  
Adults 8061CK1001  
Kids 8061CK3002





Rubber Printing

Pocket with Zipper



**Training Vest**  
Adults 3891061



**Training T-Shirt**  
Adults 3891060



**Polo Shirt**  
Adults 3891066



**Training Jacket**  
Adults 3881324  
Kids 3883324



**Rain Jacket**  
Adults 3881211  
Kids 3883211



**Sweatshirt**  
Adults 3891570  
Kids 3893370



**Training Pants**  
Adults 8261CK1013  
Kids 8261CK3013



**Training Jacket**  
Adults 3871300  
Kids 3873300



**Half-Zipper Training Jacket**  
Adults 3871301  
Kids 3873301



**Training Pants**  
Adults 3871306  
Kids 3873306





17-52.

**EQUIPACIONES / UNIFORMS**



■ 8451ZB1253

SHORT SLEEVE FOOTBALL SET FABRIC:100% POLYESTER

ADULTS:

SIZE: S-5XL



100  
White

Back

401  
Navy Blue

500  
Purple

600  
Red

481  
Royal Sky Blue

■ 8351ZB1084

SHORT SLEEVE FOOTBALL SET(JACQUARD) FABRIC: 100% POLYESTER

ADULTS:

SIZE: S-5XL



100  
White

471  
Blue/Gray

514  
Light Purple

600  
Red

■ 8251ZB1006

SHORT SLEEVE FOOTBALL SET(JACQUARD) FABRIC: 100% POLYESTER

ADULTS:

SIZE: S-5XL



157  
White/Maroon

603  
Maroon

104  
White/Royal Blue

4025  
Light Lake Blue

460  
Indigo Blue

481  
Royal Sky Blue

■ 8451ZB1247

SHORT SLEEVE FOOTBALL SET FABRIC:100% POLYESTER

ADULTS:

SIZE: S-5XL



481 Royal Sky Blue    Back    405 Light Blue    600 Red    702 Lemon Yellow    100 White

■ 8351ZB1081

SHORT SLEEVE FOOTBALL SET FABRIC:100% POLYESTER

ADULTS:

SIZE: S-5XL



100 White    405 Light Blue    416 Dark Blue    603 Maroon

■ 8351ZB1082

SHORT SLEEVE FOOTBALL SET (JACQUARD) FABRIC:100% POLYESTER

ADULTS:

SIZE: S-5XL



000 Black    100 White    416 Dark Blue    609 Wine Red






■ 8451ZB1248

SHORT SLEEVE FOOTBALL SET FABRIC:100% POLYESTER  
ADULTS:  
SIZE: S-5XL



-  3D Holographic Printing
-  3D Silicone Label
-  Silver Heat Printing

■ 8251ZB1007

SHORT SLEEVE FOOTBALL SET FABRIC:100% POLYESTER  
ADULTS:  
SIZE: S-5XL



■ 8251ZB1004

SHORT SLEEVE FOOTBALL SET FABRIC:100% POLYESTER  
ADULTS:  
SIZE: S-5XL





■ 8451ZB1245 ■ 8451ZB3245

SHORT SLEEVE FOOTBALL SET FABRIC:100% POLYESTER

ADULTS: KIDS:  
SIZE: S-5XL SIZE:110-160



600  
Red

Bock

481  
Royal Sky Blue

907  
Neon Orange

405  
Light Blue

100  
White

■ 8351ZB1083

SHORT SLEEVE FOOTBALL SET FABRIC:100% POLYESTER

ADULTS:  
SIZE: S-5XL



100  
White

416  
Dark Blue

600  
Red

822  
Orangish Yellow

■ 8251ZB1003 ■ 8251ZB3003

SHORT SLEEVE FOOTBALL SET FABRIC:100% POLYESTER

ADULTS: KIDS:  
SIZE: S-5XL SIZE: 110-160



481  
Royal Sky Blue

100  
White

416  
Dark Blue

907  
Neon Orange

603  
Maroon





■ 8451ZB1246 ■ 8451ZB3246

SHORT SLEEVE FOOTBALL SET FABRIC:100% POLYESTER

ADULTS: KIDS:  
SIZE: S-5XL SIZE: 110-160



■ 8251ZB1002 ■ 8251ZB3002

SHORT SLEEVE FOOTBALL SET FABRIC:100% POLYESTER

ADULTS: KIDS:  
SIZE: S-5XL SIZE: 110-160



■ 8351ZB1085 ■ 8351ZB3085

SHORT SLEEVE FOOTBALL SET FABRIC:100% POLYESTER

ADULTS: KIDS:  
SIZE: S-5XL SIZE: 110-160



■ 8251ZB1005 ■ 8251ZB3005

SHORT SLEEVE FOOTBALL SET FABRIC:100% POLYESTER

ADULTS: SIZE: S-5XL  
KIDS: SIZE: 110-160



■ 8151ZB1001 ■ 8151ZB3001

SHORT SLEEVE FOOTBALL SET FABRIC:100% POLYESTER

ADULTS: SIZE: S-5XL  
KIDS: SIZE: 110-160



■ 7351ZB1129 ■ 7351ZB3130

SHORT SLEEVE FOOTBALL SET FABRIC: 100%POLYESTER

ADULTS: SIZE: S-5XL  
KIDS: SIZE: 110-160



■ 8351ZB1158 ■ 8351ZB3158 (3871001 FOR COLOR 603 AND 105)

SHORT SLEEVE FOOTBALL SET FABRIC:100% POLYESTER

ADULTS: SIZE: S-5XL  
KIDS: SIZE: 110-160



510 Purple /Black  
996 Neon Blue /Dark Blue  
914 Neon Pink /Dark Blue  
603 Maroon  
667 Red /Dark Metal Gray  
910 Neon Orange /White



918 Neon Yellow /Royal Blue  
328 Mint Green  
300 Green  
104 White /Royal Blue  
105 White /Green

■ 8151ZB1005

SHORT SLEEVE FOOTBALL SET FABRIC:100% POLYESTER

ADULTS: SIZE: S-5XL



481 Royal Sky Blue  
300 Green  
471 Blue/Gray  
600 Red  
100 White

■ 3801098

SHORT SLEEVE FOOTBALL SET(SUBLIMATION) FABRIC:100% POLYESTER

ADULTS: SIZE: S-5XL



400 Royal Blue  
600 Red  
100 White  
201 Dark Gray

■ 8151ZB1004

SHORT SLEEVE FOOTBALL SET FABRIC:100% POLYESTER

ADULTS: SIZE: S-5XL



100 White  
240 Dark Metal Gray  
405 Light Blue  
4021 Industrial Blue  
636 Pink

■ 8151ZB1003

SHORT SLEEVE FOOTBALL SET FABRIC:100% POLYESTER

ADULTS: SIZE: S-5XL



907 Neon Orange  
481 Royal Sky Blue  
368 Turquoise  
100 White

■ 8151ZB1006

SHORT SLEEVE FOOTBALL SET FABRIC:100% POLYESTER

ADULTS:  
SIZE: S-5XL



■ 3801169

SHORT SLEEVE FOOTBALL SET FABRIC:100% POLYESTER

ADULTS:  
SIZE: S-5XL



Sublimation



■ 3801099 ■ 3803099

SHORT SLEEVE FOOTBALL SET FABRIC:100% POLYESTER

ADULTS: SIZE: S-5XL KIDS: SIZE: 110-160



■ 3801096

SHORT SLEEVE FOOTBALL SET FABRIC:100% POLYESTER

ADULTS:  
SIZE: S-5XL



Sublimation



■ 3883033

SHORT SLEEVE FOOTBALL SET FABRIC:100% POLYESTER

KIDS:  
SIZE: 110-170



■ 8161ZB1001 ■ 8161ZB3001

LONG SLEEVE FOOTBALL SET FABRIC:100% POLYESTER

ADULTS: SIZE: S-5XL KIDS: SIZE: 110-160



■ 8451ZB1252 ■ 8451ZB3252

TRAINING T-SHIRT FABRIC:100% POLYESTER

ADULTS:  
SIZE:S-5XL

KIDS:  
SIZE:120-160



■ 3891544

TRAINING T-SHIRT FABRIC:100% POLYESTER

ADULTS:

SIZE: S-7XL,S-5XL(ROYAL BLUE, GREEN, YELLOW)



■ 3891534

LONG SLEEVE TRAINING T-SHIRT FABRIC:100% POLYESTER

ADULTS:

SIZE: S-7XL





■ 8451ZB1250

SHORT SLEEVE FOOTBALL SHIRT FABRIC:100% POLYESTER

ADULTS:  
SIZE: S-5XL



-  3D SILICONE PRINTING
-  FOAM PRINTING
-  SILVER HEAT PRINTING

■ 8251ZB1001

SHORT SLEEVE FOOTBALL SHIRT FABRIC:100% POLYESTER

ADULTS:  
SIZE: S-5XL



■ 8251ZB1008

SHORT SLEEVE FOOTBALL SHIRT FABRIC:100% POLYESTER

ADULTS:  
SIZE: S-5XL



■ 8451ZB1249

TRAINING T-SHIRT FABRIC:100% POLYESTER

ADULTS:  
SIZE: S-5XL



171 Beige    Back    481 Royal Sky Blue    636 Pink    516 Dark Purple    514 Light Purple    600 Red

■ 8151ZB1007 ■ 8151ZB3007

SHORT SLEEVE FOOTBALL SHIRT FABRIC:100% POLYESTER

ADULTS:    KIDS:  
SIZE: S-5XL    SIZE: 120 - 160



201 Dark Gray    Back    600 Red    607 Purplish Red    416 Dark Blue



481 Royal Sky Blue    328 Mint Green    365 Greenblack    906 Neon Blue





■ 8451ZB1251

TRAINING T-SHIRT FABRIC:100% POLYESTER

ADULTS:  
SIZE: S-5XL



514  
Light Purple

Back

600  
Red

405  
Light Blue

452  
Blue



SILVER HEAT PRINTING

3D SILICONE PRINTING

■ 8351ZB1196

■ 8351ZB3196

SHORT SLEEVE FOOTBALL SHIRT FABRIC:100% POLYESTER

ADULTS: SIZE: S-5XL

KIDS:

SIZE: 120 - 160



609  
Wine Red

158  
White/Wine Red

481  
Royal Sky Blue

104  
White/Royal Blue

300  
Green

105  
White/Green

■ KMC160025

SHORT SLEEVE FOOTBALL SHIRT(ELASTIC AND BREATHABLE) FABRIC:POLYESTER/SPANDEX

ADULTS:  
SIZE: S-5XL



LASER PUNCHING

610  
Red/White

Back

409  
Royal Blue/White

■ 7351TX1092 ■ 7351TX3093

SHORT SLEEVE FOOTBALL SHIRT FABRIC:100% POLYESTER

ADULTS: SIZE: S-5XL  
KIDS: SIZE: 120-160



105 White/Green Back  
311 Green/White  
107 White/Red  
610 Red/White  
476 Sky Blue/White



104 White/Royal Blue  
409 Royal Blue/White  
112 White/Dark Blue  
424 Dark Blue/White  
105 White/Black  
005 Black/White



139 White/Bright Orange  
809 Bright Orange/White  
712 Yellow/Black  
005 Black/Yellow  
6013 Red/Green  
313 Green/Red



425 Dark Blue/Red  
615 Red/Dark Blue  
158 White/Wine Red  
691 Wine Red/White

■ 7351ZB1255 (8351ZB1143) ■ 7351ZB3255 (8351ZB3143)

FOOTBALL SHORTS FABRIC:100% POLYESTER

ADULTS: SIZE: S-5XL  
KIDS: SIZE: 120-160



100 White  
000 Black  
005 Black/Yellow  
416 Dark Blue  
104 White/Royal Blue



481 Royal Sky Blue  
107 White/Red  
600 Red  
105 White/Green  
311 Green/White



691 Wine Red/White  
809 Bright Orange/White  
712 Yellow/Black  
476 Sky Blue/White

■ 3801265

FOOTBALL SHORTS FABRIC:100% POLYESTER

ADULTS: SIZE: S-5XL



000 Black  
416 Dark Blue  
100 White (Logo: Royal Blue)

■ 3891060

SHORT SLEEVE FOOTBALL SHIRT FABRIC:100% POLYESTER

ADULTS:  
SIZE: S-5XL



609 Wine Red      Back  
4012 Industrial Blue /Light Blue      409 Royal Blue /White  
930 Neon Yellow /Black      104 White /Royal Blue

■ 3891061

TRAINING VEST FABRIC:100% POLYESTER

ADULTS:  
SIZE: S-5XL



609 Wine Red      Back  
4012 Industrial Blue /Light Blue      409 Royal Blue /White  
930 Neon Yellow /Black      104 White/Royal Blue

■ 8451BX1024

TRAINING VEST FABRIC:100% POLYESTER

ADULTS:  
SIZE: S-5XL



100 White      401 Navy Blue      500 Purple

■ 8051BX3001

TRAINING BIB FABRIC:100% POLYESTER

KIDS:  
SIZE: 140



931 Neon Pink /Black      Back  
610 Red/White      932 Neon Orange /Black  
409 Royal Blue /White      311 Green/White  
930 Neon Yellow /Black      103 White/Black

■ 8051BX1001

TRAINING BIB FABRIC:100% POLYESTER

ADULTS :  
SIZE: M XL



932 Neon Orange /Black      Back  
611 Red/Black      931 Neon Pink /Black  
412 Royal Blue /Black      933 Neon Green /Black  
930 Neon Yellow /Black      103 White/Black      311 Green/White

■ 8051BX1002 ■ 8051BX3002

TRAINING BIB FABRIC:100% POLYESTER (NO LOGO ON THE BACK)

ADULTS:      KIDS:  
SIZE: M XL      SIZE: 140



409 Royal Blue /White      Back  
610 Red/White      932 Neon Orange /Black  
930 Neon Yellow /Black

CBCK

CBCK

■ 8461ZB1243 ■ 8461ZB3243

LONG SLEEVE GOALKEEPER SET FABRIC:100% POLYESTER

ADULTS: SIZE: S-5XL  
KIDS: SIZE: 120-160



■ 3871014

SHORT SLEEVE GOALKEEPER SET FABRIC:100% POLYESTER

ADULTS: SIZE: S-4XL



4007 Sky Blue/Dark Blue  
930 Neon Yellow/Black  
997 Neon Rose/Dark Gray  
273 Light Gray/Black

■ 3871007 ■ 3873007

LONG SLEEVE GOALKEEPER SET FABRIC:100% POLYESTER

ADULTS: SIZE: S-4XL  
KIDS: SIZE: 120-160



4007 Sky Blue/Dark Blue  
Back  
930 Neon Yellow/Black  
997 Neon Rose/Dark Gray  
273 Light Gray/Black





■8461ZB1244 ■8461ZB3244

LONG SLEEVE GOALKEEPER SET FABRIC:100% POLYESTER

ADULTS: SIZE: S-5XL  
KIDS: SIZE: 120-160



■7361ZB1256 (3801286) ■7361ZB3256 (3803286)

LONG SLEEVE GOALKEEPER SET FABRIC:100% POLYESTER

ADULTS: SIZE: S-5XL  
KIDS: SIZE: 120-160



■K15Z408 ■K15Z408C

GOALKEEPER SHORTS FABRIC:100% POLYESTER

ADULTS: SIZE: S-3XL  
KIDS: SIZE: 130-160



■K15Z408L ■K15Z408LC

GOALKEEPER PANTS FABRIC:100% POLYESTER

ADULTS: SIZE: S-3XL  
KIDS: SIZE: 130-160



CBCK

■ 8351ZB1086

SHORT SLEEVE REFEREE SET FABRIC:100% POLYESTER

ADULTS:  
SIZE: S-5XL



■ K15Z221

SHORT SLEEVE REFEREE SET  
FABRIC:100% POLYESTER

ADULTS:  
SIZE: S-4XL



■ K15Z225

SHORT SLEEVE REFEREE SET  
FABRIC:100% POLYESTER

ADULTS:  
SIZE: S-4XL



CBCK

CBCK

■ 3881035

LONG SLEEVE REFEREE SET  
FABRIC:100% POLYESTER

ADULTS:  
SIZE: S-4XL



■ 8152LB1006

REFEREE T-SHIRT FABRIC:100% POLYESTER

ADULTS:  
SIZE: S-5XL



■ 3881027

BASKETBALL REFEREE T-SHIRT

ADULTS:  
SIZE: S-7XL FABRIC:100% POLYESTER



■ 3881022

BASKETBALL REFEREE POLO

ADULTS:  
SIZE: S-5XL FABRIC:100% POLYESTER



■ 8152LB1007

REFEREE POLO FABRIC:100% POLYESTER

ADULTS:  
SIZE: S-5XL



■ 8362CK1061

REFEREE PANTS

ADULTS:  
SIZE: S-7XL FABRIC:93% POLYESTER,7% SPANDEX







■ 8451PL1064

POLO SHIRT FABRIC:86% NYLON,14% SPANDEX

ADULTS:

SIZE: S-5XL



K-COOL



100  
White

Back

401  
Navy Blue

500  
Purple

■ 8353PL1070 ■ 8353PL2070

POLO SHIRT FABRIC:100% POLYESTER

MEN:

SIZE: S-5XL

WOMEN:

SIZE: S-3XL



514  
Light Purple

416  
Dark Blue

471  
Blue/Gray

044  
Medium Gray

■ 8351PL1050 (7351PL1075)

POLO SHIRT FABRIC:85% NYLON,15% SPANDEX

MEN:

SIZE: S-7XL

WOMEN:

SIZE: S-5XL

■ 8351PL2050



CHILL TOUCH



ANTI-UV



100  
White

405  
Light Blue

432  
Blue

416  
Dark Blue

202  
Light Gray

000  
Black



■ 8251PL1003

POLO SHIRT FABRIC:77% NYLON,23% SPANDEX

ADULTS:  
SIZE: S-5XL



100 White      200 Gray      405 Light Blue

■ 8251PL1001

POLO SHIRT FABRIC:77%NYLON,23%SPANDEX

ADULTS:  
SIZE: S-5XL



015 Black/Gray      Back      100 White

■ 8153PL1003 ■ 8153PL2003

POLO SHIRT FABRIC:78% NYLON,22% SPANDEX

MEN:  
SIZE: S-5XL(WHITE)  
S-7XL(OTHER COLORS)

WOMEN:  
SIZE: S-3XL



416 Dark Blue      600 Red      100 White      000 Black

■ 8251PL1006

POLO SHIRT FABRIC:86%NYLON 14%SPANDEX

ADULTS:  
SIZE: S-5XL



100 White      200 Gray      000 Black      328 Mint Green

■ 8153PL2001

WOMEN'S POLO SHIRT FABRIC:76.5% COTTON,23.5% POLYESTER

WOMEN:  
SIZE: S-4XL



000 Black      401 Navy Blue      417 Sapphire Blue

■ 8153PL1005

POLO SHIRT FABRIC:92% POLYESTER,8% SPANDEX

ADULTS:  
SIZE: S-7XL(BLACK ONLY) S-5XL(OTHER COLORWAYS)



000 Black      481 Royal Sky Blue      416 Dark Blue      100 White

■ 6126PL1003

POLO SHIRT FABRIC:100% COTTON

ADULTS:

SIZE: S-5XL



401  
Navy Blue

000  
Black

100  
White

■ 8251PL1002 ■ 8251PL2002

POLO SHIRT FABRIC:100% COTTON

MEN:

SIZE: S-7XL(BLACK;DARK BLUE;WHITE)

WOMEN:

SIZE: S-5XL



000  
Black

100  
White

416  
Dark Blue

405  
Light Blue

636  
Pink

■ 8051PL1001

POLO SHIRT FABRIC:100% COTTON

ADULTS:

SIZE: S-7XL(NAVY BLUE) S-5XL(RED AND WHITE)



401  
Navy Blue

600  
Red

100  
White

■ 8251PL1005

POLO SHIRT FABRIC:71% COTTON,25.5% POLYESTER,3.5% SPANDEX

ADULTS:

SIZE: S-7XL(BLACK) S-5XL(OTHER COLORWAYS)



000  
Black

100  
White

404  
Sky Blue

■ 8153PL1001

POLO SHIRT FABRIC:NYLON/SPANDEX

ADULTS:

SIZE: S-5XL



481  
Royal Sky Blue

4021  
Industrial Blue

405  
Light Blue

100  
White

■ 3891066

POLO SHIRT FABRIC:100% POLYESTER

ADULTS:

SIZE: S-7XL



012  
Black  
/Neon Yellow

4000  
Dark Blue  
/Neon Yellow

609  
Wine Red

4012  
Industrial Blue  
/Light Blue

409  
Royal Blue  
/White

104  
White  
/Royal Blue

■ 7351PL1070 (3891064)

POLO SHIRT FABRIC:100% POLYESTER

MEN:  
SIZE: S-7XL



K-COOL



000  
Black

401  
Navy Blue

609  
Wine Red

417  
Sapphire Blue

421  
Sea Blue

906  
Neon Blue

CBCK

CBCK



600  
Red

807  
Bright Orange

716  
Yellow

328  
Mint Green

100  
White

300  
Green

405  
Light Blue

CBCK

CBCK

■ 7351PL3070 (3893064)

POLO SHIRT FABRIC:100% POLYESTER

KIDS:  
SIZE: 110-160



K-COOL



906  
Neon Blue

600  
Red

807  
Bright Orange

716  
Yellow

100  
White

000  
Black

401  
Navy Blue

405  
Light Blue

CBCK

CBCK

CBCK

CBCK

■ 3892064

POLO SHIRT FABRIC:100% POLYESTER

WOMEN:  
SIZE: S-4XL



K-COOL



401  
Navy Blue

600  
Red

602  
Rose

514  
Light Purple

906  
Neon Blue



405  
Light Blue



716  
Yellow



310  
Apple Green



100  
White

★ ■ 8451TX1179 ■ 8451TX2179

TRAINING T-SHIRT FABRIC:87% POLYESTER,13% SPANDEX



K-COOL

MEN:

SIZE: S-5XL

WOMEN:

SIZE:S-3XL



(with a flag in packing bag)



100  
White



Back



000  
Black



L03  
Sky Cyan Blue



600  
Red



Y01  
Light Khaki



★ ■ 8451TX1178

TRAINING T-SHIRT FABRIC:100% POLYESTER



K-COOL

MEN:

SIZE: 2XS-5XL



(with a flag in packing bag)



100  
White



600  
Red



471  
Blue/Gray



000  
Black



### ■ 8251TX1001

TRAINING T-SHIRT FABRIC:95% POLYESTER,5% SPANDEX



K - COOL

ADULTS:

SIZE: S-5XL



481  
Royal Sky Blue

Back

100  
White

471  
Blue/Gray

000  
Black

#### DETAILS:

- RECYCLED MATERIAL, ENVIRONMENTAL FRIENDLY
- ANTI-BACTERIAL SILVER FIBER
- FAST DRY

### ■ 8151TX1002 ■ 8151TX2002 ■ 8151TX3002

TRAINING T-SHIRT FABRIC:88% POLYESTER,12% SPANDEX



K - COOL



MEN:

SIZE: S-7XL

WOMAN:

SIZE: S-3XL

KIDS:

SIZE: 110-160



100  
White

481  
Royal Sky Blue

636  
Pink

600  
Red

905  
Neon Yellow

CBCK

CBCK

CBCK



000  
Black

203  
Gray/Blue

321  
Light Water Green

405  
Light Blue

CBCK

### ■ 8151TX1001

TRAINING T-SHIRT FABRIC:100% POLYESTER



K - COOL

ADULTS:

SIZE: S-7XL



416  
Dark Blue

200  
Gray

600  
Red

### ■ 8151TX1003

TRAINING T-SHIRT FABRIC:88% POLYESTER,12% SPANDEX



K - COOL

ADULTS:

SIZE: S-7XL

Laser-cut holes  
Reflective printing



000  
Black

Back

416  
Dark Blue

808  
Orange

100  
White

426  
Moon Blue

### ■ 3891551 (UPDATED FOR 3891541)

TRAINING T-SHIRT FABRIC:90%POLYESTER,10%SPANDEX



ADULTS:

SIZE: S-7XL



309  
Blackish Green

Back

000  
Black

481  
Royal Sky Blue

■ 3892551 (UPDATED FOR 3892541)

TRAINING T-SHIRT FABRIC:90% POLYESTER,10% SPANDEX

WOMEN:

SIZE: S-3XL



607  
Purplish Red

Back

000  
Black

416  
Dark Blue

903  
Neon Red

■ 3891544

TRAINING T-SHIRT FABRIC:100% POLYESTER



ADULTS:

SIZE: S-7XL,S-5XL(DARK BLUE,GREEN,YELLOW)



000  
Black

400  
Royal Blue

600  
Red

100  
White

416  
Dark Blue

300  
Green

716  
Yellow

■ 3891534

LONG SLEEVE TRAINING T-SHIRT FABRIC:100% POLYESTER

ADULTS:

SIZE: S-7XL



000  
Black

600  
Red

400  
Royal Blue

100  
White

■ 8351TX1131 ■ 8351TX3131

LONG SLEEVE TRAINING SHIRT FABRIC:100% POLYESTER

MEN:

SIZE: S-7XL

KITS:

SIZE: 110-160



100  
White

Back

339  
Pole Green

340  
Emerald Green

514  
Light Purple

416  
Dark Blue

609  
Wine Red

■ 8351TX1238

TRAINING T-SHIRT

FABRIC:100% POLYESTER

ADULTS:

SIZE: 2XS-7XL



600  
Red

100  
White

402  
Lake Blue

243  
Classic Gray

416  
Dark Blue

■ 8351TX1144

LONG SLEEVE TRAINING SHIRT FABRIC:100% POLYESTER

ADULTS:

SIZE: S-7XL



100  
White

402  
Lake Blue

243  
Classic Gray

416  
Dark Blue

600  
Red

■ 8352BX1006

TRAINING VEST FABRIC:100% POLYESTER

ADULTS:  
SIZE: S-7XL



K - COOL



850  
Bright White

Back

301  
Grass Green

800  
Charcoal

■ 8352BX1007

TRAINING VEST FABRIC:100% POLYESTER

ADULTS:  
SIZE: 2XS-7XL



K - COOL



100  
White

000  
Black

636  
Pink

500  
Purple

716  
Yellow

481  
Royal Sky Blue

600  
Red

■ 8352BX1010

TRAINING VEST FABRIC:100% POLYESTER

ADULTS:  
SIZE: S-7XL



K - COOL



000  
Black

600  
Red

214  
Khaki

500  
Purple

■ 3891061

TRAINING VEST FABRIC:100% POLYESTER

ADULTS:  
SIZE: S-5XL



609  
Wine Red

Back

4012  
Industrial Blue  
/Light Blue

409  
Royal Blue  
/White

930  
Neon Yellow  
/Black

104  
White/Royal Blue

■ 3891552 (UPDATED FOR 3891057)

TRAINING VEST FABRIC:90% POLYESTER,10% SPANDEX

ADULTS:  
SIZE: S-7XL



481  
Royal Sky Blue

Back

309  
Blockish Green

000  
Black

■ 8352BX1008

TRAINING VEST WITH HOOD FABRIC:55% COTTON,45% POLYESTER

ADULTS:  
SIZE: S-7XL



202  
Light Gray

217  
Brown

100  
White

■ 8451TX1229

T-SHIRT FABRIC:93% COTTON,7% SPANDEX

ADULTS:  
SIZE: 2XS-5XL



100  
White

481  
Royal Sky Blue

000  
Black



600  
Red

631  
Light Pink

■ 3891542

T-SHIRT FABRIC:93.5% COTTON,6.5% SPANDEX

ADULTS:  
SIZE: S-7XL



000  
Black

400  
Royal Blue

100  
White

■ 7351TX1091

T-SHIRT FABRIC:95% COTTON,5% SPANDEX

ADULTS:  
SIZE: S-7XL



000  
Black

400  
Royal Blue

222  
Melange Gray

600  
Red



100  
White

■ 8251TX1002

T-SHIRT FABRIC:72% COTTON,28% POLYESTER

ADULTS:  
SIZE: S-5XL



100  
White

000  
Black

432  
Blue



■ 8153DK1002

WOVEN SHORTS  
FABRIC:88% NYLON,12% SPANDEX  
ADULTS:  
SIZE: S-5XL



416 Dark Blue    000 Black    200 Gray

■ 3881208

WOVEN SHORTS  
FABRIC:POLYESTER/SPANDEX  
ADULTS:  
SIZE: S-7XL



021 Black/Dark Gray    261 Dark Gray/Black    422 Dark Blue/Neon Orange

CBCK

■ 3591346

KNIT SHORTS    FABRIC:100% POLYESTER  
ADULTS:  
SIZE: S-7XL



000 Black    469 Navy    600 Red

■ 8153DK1001

KNITTED SHORTS  
FABRIC:100% POLYESTER  
ADULTS:  
SIZE: S-5XL



000 Black    416 Dark Blue    214 Khaki

■ 3881204    ■ 3883204

WOVEN SHORTS  
FABRIC:POLYESTER/SPANDEX  
ADULTS:  
SIZE: S-7XL

KIDS:  
SIZE: 120-160



416 Dark Blue    Back    000 Black    200 Gray

■ 8352DK1056

KNITTED SHORTS  
FABRIC:100% POLYESTER  
ADULTS:  
SIZE: S-7XL



800 Charcoal    850 Bright White

■ 8352DK1055

KNITTED SHORTS  
FABRIC:96% COTTON,4% SPANDEX  
ADULTS:  
SIZE: S-7XL



800 Charcoal

■ 8251DK1002

KNITTED SHORTS  
FABRIC:77% NYLON,23% SPANDEX  
ADULTS:  
SIZE: S-5XL



000 Black    Back

■ 7451DK1131

KNITTED SHORTS    FABRIC:COTTON/SPANDEX  
ADULTS:  
SIZE: S-5XL

KIDS:  
SIZE: 110-170



000 Black    401 Navy Blue

CBCK

CBCK

■ 8351DK1060

WOVEN SHORTS  
FABRIC:84% NYLON,16% SPANDEX  
ADULTS:  
SIZE: S-5XL



309 Blackish Green    327 Olive    481 Royal Sky Blue    Y01 Light Khaki

■ 8251DK1001

WOVEN SHORTS  
FABRIC:86% NYLON,14% SPANDEX  
ADULTS:  
SIZE: S-5XL



200 Gray    Back

■ 8153ZK1001

TRAINING 3/4PANTS  
FABRIC:100% POLYESTER  
ADULTS:  
SIZE: S-5XL



000 Black    416 Dark Blue

■ 8151DK1001

BASKETBALL SHORTS    FABRIC:100% POLYESTER  
ADULTS:  
SIZE: S-7XL



481 Royal Sky Blue    Back    000 Black    300 Green

75-118

# TRAINING KITS





■ 8461TT1029

TRAINING SWEATSHIRT FABRIC:87% POLYESTER,13% SPANDEX

ADULTS:  
SIZE: S-5XL



■ 8461WT1093

TRAINING JACKET FABRIC A:100% POLYESTER FABRIC B:75% POLYESTER ,25% SPANDEX

ADULTS:  
SIZE: S-5XL



■ 8461WT1094

WOVEN JACKET FABRIC:100% NYLON

ADULTS:  
SIZE: S-5XL



■ 8461CK1076

TRAINING PANTS FABRIC:94% POLYESTER,6% SPANDEX

ADULTS:  
SIZE: S-5XL



■ 8351TX1144

LONG SLEEVE TRAINING SHIRT FABRIC:100% POLYESTER

ADULTS:

SIZE: S-7XL



600  
Red

402  
Lake Blue

243  
Classic Gray

416  
Dark Blue

100  
White

Back

■ 8361TT1016

1/2 ZIPPERED TRAINING PULLOVER WITH PADDING

ADULTS:

SIZE: S-5XL

MAIN FABRIC:100% POLYESTER  
INSERT FABRIC IN CHEST:100% POLYESTER  
LINING FABRIC IN CHEST:89% POLYESTER,11% SPANDEX  
PADDING:100% POLYESTER



600  
Red

402  
Lake Blue

243  
Classic Gray

416  
Dark Blue

100  
White

Back

■ 8361WT1063

WOVEN JACKET FABRIC:100% NYLON  
(CONCEALED HOOD)

ADULTS:

SIZE: XS-7XL



10000mm



600  
Red

402  
Lake Blue

243  
Classic Gray

416  
Dark Blue

100  
White

Back

■ 8361WT1064

TRAINING JACKET FABRIC:100% POLYESTER

ADULTS:

SIZE: S-7XL

I II III IV V

THIN THICK



600  
Red

402  
Lake Blue

243  
Classic Gray

416  
Dark Blue

100  
White

Back



■ 8061TT1007 ■ 7361TT3013

HALF-ZIPPER TRAINING JACKET FABRIC:POLYESTER/SPANDEX

ADULTS: SIZE: S-5XL  
KIDS: SIZE: 120-160



201 Dark Gray ●●  
481 Royal Sky Blue ●●  
600 Red ●●  
421 Sea Blue ●●  
4021 Industrial Blue ●●  
365 Greenblack ●●  
328 Mint Green ●●

■ 8061WT1009 ■ 8061WT3002

TRAINING JACKET FABRIC:100% POLYESTER

ADULTS: SIZE: S-7XL  
KIDS: SIZE: 110-160



I II III IV V  
THIN THICK



201 Dark Gray ●●  
481 Royal Sky Blue ●●  
600 Red ●●  
807 Bright Orange ●●  
906 Neon Blue ●●  
328 Mint Green ●●  
306 Dark Green ●●  
365 Greenblack ●●  
243 Classic Gray ●●  
469 Navy ●●

■ 8061WT1005 ■ 8061WT3001

RAIN JACKET FABRIC:100% POLYESTER (MINT GREEN) 100% NYLON(OTHER COLORWAYS)

ADULTS: SIZE: S-5XL  
KIDS: SIZE: 110-160



201 Dark Gray ●●  
400 Royal Blue ●●  
600 Red ●●  
807 Bright Orange ●●  
906 Neon Blue ●●  
328 Mint Green ●●  
306 Dark Green ●●  
243 Classic Gray ●●  
365 Greenblack ●●  
469 Navy ●●



■ 3881324 ■ 3883324

TRAINING JACKET FABRIC:100% POLYESTER

ADULTS: SIZE: S-7XL  
KIDS: SIZE: 110-160

I II III IV V  
THIN THICK



012 Black /Neon Yellow  
Back  
4000 Dark Blue /Neon Yellow  
409 Royal Blue /White  
420 Dark Blue /Neon Rose  
609 Wine Red  
4012 Industrial Blue /Light Blue  
103 White/Black  
610 Red/White  
924 Neon Orange /Royal Blue

■ 3881211 ■ 3883211

RAIN JACKET FABRIC : 100% NYLON FABRIC:100% POLYESTER (FOR NEON ORANGE/ROYAL BLUE ONLY)

ADULTS: SIZE: 2XS-7XL  
KIDS: SIZE: 110-170



012 Black /Neon Yellow  
Back  
4000 Dark Blue /Neon Yellow  
409 Royal Blue /White  
420 Dark Blue /Neon Rose  
609 Wine Red  
4012 Industrial Blue /Light Blue  
103 White/Black  
610 Red/White  
924 Neon Orange /Royal Blue

■ 3891370 ■ 3893370

TRAINING SWEATSHIRT FABRIC:100% POLYESTER

ADULTS: SIZE: S-7XL(BLACK/NEON YELLOW,WINE RED) S-5XL(OTHER COLORWAYS)

KIDS: SIZE: 110-160



I II III IV V  
THIN THICK



012 Black/Neon Yellow  
4012 Industrial Blue/Light Blue  
409 Royal Blue/White  
609 Wine Red  
610 Red/White

CBCK

CBCK

CBCK





KELME MONTES  
攀登者系列

■ 3871300 ■ 3873300

TRAINING JACKET FABRIC:100% POLYESTER

ADULTS: SIZE: S-5XL  
KIDS: SIZE: 120-160



020 Black /Neon Blue  
Back  
420 Dark Blue /Neon Rose  
012 Black /Neon Yellow  
918 Neon Yellow /Royal Blue  
021 Black /Dark Gray

■ 3871301 ■ 3873301

HALF-ZIPPER TRAINING JACKET FABRIC:100% POLYESTER

ADULTS: SIZE: S-5XL  
KIDS: SIZE: 120-160



I II III IV V  
THIN THICK



020 Black /Neon Blue  
Back  
420 Dark Blue /Neon Rose  
012 Black /Neon Yellow  
918 Neon Yellow /Royal Blue  
021 Black /Dark Gray

■ 3871306 ■ 3873306

TRAINING PANTS FABRIC:POLYESTER/SPANDEX

ADULTS: SIZE: S-5XL  
KIDS: SIZE: 120-160



I II III IV V  
THIN THICK



020 Black /Neon Blue  
Back  
012 Black /Neon Yellow  
036 Black /Light Gray  
420 Dark Blue /Neon Rose

■ 8161WT1005  
TRAINING JACKET FABRIC:100% POLYESTER

ADULTS:

SIZE: S-7XL

I II III IV V  
THIN THICK



707  
Light Yellow

Back

000  
Black

401  
Navy Blue

600  
Red

■ 8161WT1006  
RAIN JACKET FABRIC:100% NYLON

ADULTS:

SIZE: S-5XL,S-7XL(BLACK ONLY)



707  
Light Yellow

Back

000  
Black

401  
Navy Blue

600  
Red

■ 8161CK1003  
TRAINING PANTS FABRIC:94% POLYESTER,6% SPANDEX

ADULTS:

SIZE: S-7XL

I II III IV V  
THIN THICK



474  
Dark Blue  
/Orange

Back

015  
Black/Gray

005  
Black/Yellow

4027  
Dark Blue  
/Light Yellow







■ 8361TT3015

1/2 ZIPPERED TRAINING PULLOVER FABRIC:100% POLYESTER

KIDS:

SIZE: 110-170



402 Lake Blue

528 Purple/Blue

416 Dark Blue

245 Classic Gray

609 Wine Red

■ 8361WT3075

TRAINING JACKET FABRIC:100% POLYESTER

KIDS:

SIZE: 110-170

I II III IV V  
THIN THICK



402 Lake Blue

528 Purple/Blue

416 Dark Blue

245 Classic Gray

609 Wine Red

■ 8361WT3074

WOVEN JACKET FABRIC:100% NYLON

KIDS:

SIZE: 110-170

(CONCEALED HOOD)



402 Lake Blue

528 Purple/Blue

416 Dark Blue

245 Classic Gray

609 Wine Red

■ 8261WT1018 (7361WT1101) ■ 8261WT2018

WALKING JACKET WITH HOOD FABRIC:COTTON/POLYESTER/SPANDEX

MEN: SIZE: S-5XL  
WOMEN: SIZE: S-3XL

I II III **IV** V  
THIN THICK



222  
Melange Gray

CBCK

000  
Black

CBCK

600  
Red

416  
Dark Blue

CBCK

■ 8261CK1012 (7361CK1078) ■ 8261CK2012

WALKING PANTS FABRIC:COTTON/POLYESTER/SPANDEX

MEN: SIZE: S-5XL  
WOMEN: SIZE: S-3XL

I II III **IV** V  
THIN THICK



000  
Black

CBCK

222  
Melange Gray

CBCK

416  
Dark Blue

CBCK



■ 3881212

WOVEN TRACKSUIT FABRIC:94% POLYESTER,6% SPANDEX

ADULTS:  
SIZE: 2XS-5XL



000  
Black

401  
Navy Blue

■ 3771200 ■ 3773200

TRAINING TRACKSUIT FABRIC:100% POLYESTER

ADULTS: SIZE: S-7XL  
KIDS: SIZE: 120-160



I II III IV V  
THIN THICK



409  
Royal Blue/White

Back

712  
Yellow/Black

103  
White/Black

311  
Green/White

005  
Black/White

611  
Red/Black

424  
Dark Blue/White

CBCK

CBCK

CBCK

CBCK

CBCK

■ 8161TZ1001

TRACKSUIT FABRIC:90% POLYESTER,10% SPANDEX

MEN:  
SIZE: S-7XL

I II III IV V  
THIN THICK



000  
Black

Back

416  
Dark Blue

103  
White/Black

■ 8161TZ2001

TRACKSUIT FABRIC:90% POLYESTER,10% SPANDEX

WOMEN:  
SIZE: S-3XL

I II III IV V  
THIN THICK



000  
Black

Back

416  
Dark Blue

103  
White/Black

■ 8361TT1017 ■ 8361TT3017

1/2 ZIPPERED TRAINING PULLOVER FABRIC :87% POLYESTER, 13% SPANDEX

ADULTS: SIZE: S-5XL  
KIDS: SIZE: 110-160  
Reflective Label



152  
White/Dark Metal Gray

Back

449  
Light Blue/Dark Blue

■ 8361WT1071 ■ 8361WT3071

TRAINING JACKET FABRIC:92% POLYESTER,8% SPANDEX

ADULTS: SIZE: S-7XL  
KIDS: SIZE: 110-160

I II III IV V  
THIN THICK



171  
Beige

Back

240  
Dark Metal Gray

808  
Orange

340  
Emerald Green

■ 3881336 ■ 3882336

TRAINING JACKET(WITH HOOD) FABRIC:POLYESTER/SPANDEX

MEN: SIZE: S-7XL  
WOMEN: (S-155CM) SIZE: S-3XL

I II III IV V  
THIN THICK



000  
Black

600  
Red

400  
Royal Blue

100  
White

■ 8261WT1017 ■ 8261WT2017

TRAINING JACKET FABRIC:100% POLYESTER

MEN: SIZE: S-5XL,S-7XL(BLACK ONLY)  
WOMEN: SIZE: S-3XL

I II III IV V  
THIN THICK



000  
Black

100  
White

600  
Red

■ 8261WT1019

TRAINING JACKET FABRIC:100% POLYESTER

ADULTS: SIZE: 2XS-5XL,2XS-7XL(GRAY/BLUE,DARK BLUE)

I II III IV V  
THIN THICK



200  
Gray

203  
Gray/Blue

416  
Dark Blue

609  
Wine Red

■ 8261CK1011 ■ 8261CK2011

TRAINING PANTS FABRIC:100% POLYESTER

MEN: SIZE: S-5XL  
WOMEN: SIZE: S-3XL

I II III IV V  
THIN THICK



000  
Black

200  
Gray

■ 8161TT1003

TRAINING PULLOVER FABRIC:87% POLYESTER,13% SPANDEX

ADULTS:

SIZE: S-5XL



■ 6233TX1006

1/2 ZIPPER TRAINING PULLOVER FABRIC:88% POLYESTER,12% SPANDEX

ADULTS:

SIZE: S-5XL



■ 8251WT1001

TRAINING JACKET (THIN) FABRIC:77% NYLON,23% SPANDEX

ADULTS:

SIZE: S-7XL



I II III IV V  
THIN THICK





■ 8161TT1004

TRAINING HOODIE (WITH BRUSH) FABRIC:62% POLYESTER, 38% COTTON

ADULTS:

SIZE: S-7XL(BLACK,DARK BLUE),S-5XL(OTHERS)



000 Black

416 Dark Blue

100 White

221 Melange Light Gray

600 Red

■ 8361TT1018

TRAINING HOODIE (WITH BRUSH) FABRIC:62% POLYESTER, 38% COTTON

ADULTS:

SIZE: S-5XL



000 Black

102 Off White

600 Red

222 Melange Gray

481 Royal Sky Blue

416 Dark Blue

■ 8162TT1001

TRAINING HOODIE FABRIC:90% POLYESTER,10% SPANDEX

ADULTS:

SIZE: S-7XL



485 Tiffany Blue

412 Royal Blue/Black

103 White/Black

611 Red/Black

■ 8361TT1019

TRAINING SWEATSHIRT FABRIC:87% POLYESTER 13% SPANDEX

ADULTS:

SIZE: S-5XL



405 Light Blue

416 Dark Blue

000 Black

■ 3891370 ■ 3893370

TRAINING SWEATSHIRT FABRIC:100% POLYESTER

ADULTS:

SIZE: S-7XL(BLACK/NEON YELLOW,WINE RED) S-5XL(OTHER COLORWAYS)

KIDS:

SIZE: 110-160



012 Black/Neon Yellow

4012 Industrial Blue/Light Blue

409 Royal Blue/White

609 Wine Red

610 Red/White

■ 3801241 ■ 3803241

RAIN JACKET(WATERPROOF&BREATHABLE)

FABRIC: 100% NYLON(BLACK, WHITE, ROYAL BLUE,WINE RED,RED,GREEN)  
100% POLYESTER(LIGHT BLUE,MINT GREEN, BRIGHT ORANGE, NEON GREEN)

ADULTS:            KIDS:            (CONCEALED HOOD)  
SIZE: S-7XL SIZE: 110-160



405 Light Blue

807 Bright Orange

400 Royal Blue

000 Black

100 White

CBCK

CBCK



904 Neon Green

609 Wine Red

600 Red

328 Mint Green

300(卖完不补) Green

CBCK

■ 8153WT1001 ■ 8153WT2001

LIGHT JACKET FABRIC:POLYESTER/SPANDEX

MEN:            WOMEN:             
SIZE: S-5XL SIZE: S-3XL



416 Dark Blue

426 Moon Blue

100 White

■ 3881207

WOVEN JACKET FABRIC:100% POLYESTER

ADULTS:             
SIZE: S-4XL



000 Black

100 White

■ 3891228

WOVEN JACKET FABRIC:POLYESTER/SPANDEX

ADULTS:             
SIZE: S-7XL



000 Black

469 Navy

■ 8361WT1062 ■ 8361WT3062

RAIN JACKET FABRIC:100% NYLON

ADULTS:            KIDS:            (CONCEALED HOOD)  
SIZE: S-7XL SIZE: 110-160



416 Dark Blue

Black

339 Pale Green

514 Light Purple

609 Wine Red

■ 3881212

WOVEN TRACKSUIT FABRIC:POLYESTER/SPANDEX

ADULTS:             
SIZE: 2XS-5XL



000 Black

401 Navy Blue

■ 3883034

LIGHT JACKET FABRIC:100% POLYESTER(NEON YELLOW, NEON ORANGE)  
100% NYLON(OTHER COLORWAYS)

KIDS:  
SIZE: 120-170



907  
Neon Orange

905  
Neon Yellow

400  
Royal Blue

100  
White

■ 3801244

■ 3803244

LIGHT JACKET FABRIC:NYLON/SPANDEX

ADULTS:  
SIZE: S-7XL(BLACK,WHITE ONLY) S-5XL(OTHER COLORWAYS)  
(WATERPROOF)

KIDS:  
SIZE: 110-160



000  
Black

469  
Navy

400  
Royal Blue

404  
Sky Blue



100  
White



905  
Neon Yellow

■ 3881203

WOVEN JACKET FABRIC:POLYESTER/SPANDEX

MEN:  
SIZE: 2XS-7XL(INDUSTRIAL BLUE),S-7XL(BLACK,DARK BLUE,WHITE, 2XS-5XL(OTHER COLORWAYS)  
(WATERPROOF)



ANTI-UV



000  
Black

416  
Dark Blue

400  
Royal Blue

4021  
Industrial Blue

600  
Red



807  
Bright Orange



905  
Neon Yellow



100  
White

■ 3882203

WOVEN JACKET FABRIC: POLYESTER/SPANDEX

WOMEN:  
SIZE: S-4XL  
(WATERPROOF)



ANTI-UV



000  
Black



100  
White





■ 8261CK1015

TRAINING PANTS(WITH BRUSH)  
FABRIC:POLYESTER/COTTON

ADULTS:  
SIZE: S-5XL

I II III IV V  
THIN THICK



401 Navy Blue  
000 Black



■ 8261CK1012 ■ 8261CK2012

WALKING PANTS  
FABRIC:COTTON/POLYESTER/SPANDEX

MEN: SIZE: S-9XL  
WOMEN: SIZE: S-3XL

I II III IV V  
THIN THICK



000 Black  
222 Melange Gray



■ 8261CK1001

TRAINING PANTS FABRIC:100% POLYESTER

ADULTS:  
SIZE: S-7XL

I II III IV V  
THIN THICK



000 Black  
416 Dark Blue



■ 3871308

TRAINING PANTS  
FABRIC:VISCOSE/NYLON/SPANDEX

ADULTS:  
SIZE: S-5XL

I II III IV V  
THIN THICK



4001 Dark Blue/Silver  
Back  
012 Black/Neon Yellow

■ 8261CK1017 ■ 8261CK3017

TRAINING PANTS (THICK)  
FABRIC:100% POLYESTER

ADULTS: SIZE: S-5XL  
KIDS: SIZE: 110-160

I II III IV V  
THIN THICK



401 Navy Blue  
Back  
000 Black ZIPPER

CBCK



■ 3881337

TRAINING PANTS  
FABRIC:POLYESTER/SPANDEX

ADULTS:  
SIZE: S-7XL

I II III IV V  
THIN THICK



000 Black ZIPPER

■ 8061CK1001 ■ 8061CK3002

TRAINING PANTS FABRIC:POLYESTER/SPANDEX

ADULTS: SIZE: S-7XL  
KIDS: SIZE: 110-170

I II III IV V  
THIN THICK



000 Black  
201 Dark Gray

■ 8361CK1054 ■ 8361CK3054

TRAINING PANTS  
FABRIC:95% POLYESTER,5% SPANDEX

ADULTS: SIZE: S-5XL  
KIDS: SIZE: 110-160

I II III IV V  
THIN THICK



000 Black  
416 Dark Blue  
201 Dark Gray

■ 3881329

TRAINING PANTS  
FABRIC:POLYESTER/COTTON/SPANDEX

ADULTS:  
SIZE: S-4XL

I II III IV V  
THIN THICK



000 Black  
401 Navy Blue  
225 Dark Melange Gray

■ 8461CK1076

TRAINING PANTS FABRIC:94% POLYESTER,6% SPANDEX

ADULTS:  
SIZE: S-5XL



000 Black  
Back  
401 Navy Blue

■ 8161CK1003

TRAINING PANTS FABRIC:94% POLYESTER,6% SPANDEX

ADULTS:  
SIZE: S-7XL

I II III IV V  
THIN THICK



474 Dark Blue /Orange  
Back  
005 Black/Yellow  
4027 Dark Blue /Light Yellow  
015 Black/Gray



■ 3871306 ■ 3873306  
TRAINING PANTS FABRIC:POLYESTER/SPANDEX



ADULTS: SIZE: S-5XL  
KIDS: SIZE: 120-160

I II III IV V  
THIN THICK



■ 8261CK1013 ■ 8261CK3013  
TRAINING PANTS FABRIC:100% POLYESTER



ADULTS: SIZE: S-7XL  
KIDS: SIZE: 110-160

I II III IV V  
THIN THICK



CBCK

CBCK

■ 3881350 ■ 3883350  
TRAINING PANTS FABRIC:100% POLYESTER



ADULTS: SIZE: S-5XL  
KIDS: SIZE: 110-170

I II III IV V  
THIN THICK

High quality  
Rubber printing



■ KMC160022  
TRAINING PANTS FABRIC:POLYESTER/SPANDEX



ADULTS: SIZE: S-4XL

I II III IV V  
THIN THICK



■ 8153ZK1001  
TRAINING 3/4PANTS FABRIC:100% POLYESTER  
ADULTS: SIZE: S-5XL



■ 8251CK1001  
TRAINING PANTS FABRIC:NYLON/SPANDEX  
ADULTS: SIZE: S-5XL



I II III IV V  
THIN THICK



■ 8153CK1001  
TRAINING PANTS FABRIC:100% POLYESTER



ADULTS: SIZE: S-5XL

I II III IV V  
THIN THICK



■ 8153CK1002  
TRAINING PANTS FABRIC:100% POLYESTER



ADULTS: SIZE: S-5XL

I II III IV V  
THIN THICK



■ 8261CK1014 ■ 8261CK2014  
TRAINING PANTS FABRIC:100% POLYESTER



MEN: (S-165CM)  
SIZE: 2XS-7XL

I II III IV V  
THIN THICK



WOMEN: (S-155CM)  
SIZE: S-5XL



■ 8261CK1034

TRAINING PANTS FABRIC:94% POLYESTER,6% SPANDEX

ADULTS:

SIZE: S-7XL



000  
Black

Back

■ 8162CK1001

TEARAWAY BASKETBALL PANTS FABRIC:POLYESTER/SPANDEX

ADULTS:

SIZE: S-7XL



000  
Black

202  
Light Gray

201  
Dark Gray

■ 3881316

TRAINING PANTS FABRIC:82.5% COTTON,17.5% POLYESTER

ADULTS:

SIZE: S-7XL



000  
Black

■ 8261CK1011 ■ 8261CK2011

TRAINING PANTS FABRIC:100% POLYESTER

MEN:

SIZE: S-5XL

WOMEN:

SIZE: S-5XL



000  
Black



200  
Gray

■ 8251CK1005

WOVEN TRAINING PANTS FABRIC:POLYESTER/SPANDEX

ADULTS:

SIZE: S-5XL



000  
Black

Back

■ 871003

WOVEN TRAINING PANTS FABRIC:POLYESTER/SPANDEX

ADULTS:

SIZE: S-7XL



000  
Black

416  
Dark Blue

■ 8153CK1003

WOVEN PANTS FABRIC:NYLON/SPANDEX

ADULTS:

SIZE: S-5XL



000  
Black

Back

416  
Dark Blue

■ 8061CK1004

WOVEN PANTS(WITH THIN BRUSH) FABRIC:100% POLYESTER

ADULTS:

SIZE: S-5XL



000  
Black

■ 8351CK1044

WOVEN TRAINING PANTS FABRIC:90% POLYESTER,10% SPANDEX

ADULTS:

SIZE: S-5XL



202  
Light Gray

Back

201  
Dark Gray

275  
Light Gray/Black

■ 8251CK1003

WOVEN TRAINING PANTS  
FABRIC: 100% POLYESTER  
ADULTS:  
SIZE: S-5XL



416 Dark Blue      Back      000 Black

■ 8251CK1004

WOVEN TRAINING PANTS  
FABRIC: 100% POLYESTER  
ADULTS:  
SIZE: S-5XL



416 Dark Blue      Back      000 Black

■ 3881345 ■ 3892219

WOVEN TRAINING PANTS  
FABRIC: POLYESTER/SPANDEX  
MEN: (S-165CM)      WOMEN: (S-155CM)  
SIZE: S-7XL      SIZE: S-3XL



000 Black      Back

■ 8153QZ2001

SKIRT SHELL FABRIC: NYLON/SPANDEX  
LINING FABRIC: POLYESTER/SPANDEX  
WOMEN:  
SIZE: S-L



000 Black      100 White

■ 8351QZ2002

SKIRT SHELL FABRIC: POLYESTER/SPANDEX  
LINING FABRIC: POLYESTER/SPANDEX  
WOMEN:  
SIZE: S-3XL



100 White      000 Black

■ 8153CK2001

WOMEN'S WOVEN PANTS (ANKLE LENGTH)  
FABRIC: 88% NYLON, 12% SPANDEX  
WOMEN:  
SIZE: S-3XL



000 Black      Back      416 Dark Blue

■ 8261CK2014

TRAINING PANTS  
FABRIC: 100% POLYESTER  
WOMEN: (S-155CM)  
SIZE: S-3XL



000 Black

■ 3892219

WOVEN TRAINING PANTS  
FABRIC: POLYESTER/SPANDEX  
WOMEN: (S-155CM)  
SIZE: S-3XL



000 Black

■ 8261CK2011

TRAINING PANTS  
FABRIC: 100% POLYESTER  
WOMEN:  
SIZE: S-3XL



I II III IV V  
THIN THICK



000 Black      200 Gray

■ 8261CK2012

WALKING PANTS  
FABRIC: COTTON/POLYESTER/SPANDEX  
WOMEN:  
SIZE: S-3XL



I II III IV V  
THIN THICK



000 Black      222 Melange Gray

■ 8451TL1029

SHORT SLEEVE TIGHT T-SHIRT

ADULTS: FABRIC:88% POLYESTER,12% SPANDEX  
SIZE: S-5XL



000 Black      200 Gray      100 White

■ 8461TL1028

LONG SLEEVE TIGHT T-SHIRT

ADULTS: FABRIC:88% POLYESTER,12% SPANDEX  
SIZE: S-5XL



000 Black      200 Gray      100 White

■ 8351TL1025

SHORT SLEEVE TIGHT T-SHIRT (THIN)

ADULTS: FABRIC:86% POLYESTER,14% SPANDEX  
SIZE: S-4XL



000 Black      481 Royal sky blue      100 White

■ 8351TL1024

PRO TIGHT SLEEVELESS (THIN)

ADULTS: FABRIC:86% POLYESTER,14% SPANDEX  
SIZE: S-4XL



000 Black      481 Royal sky blue      100 White

■ 3891113 ■ 3893113

LONG SLEEVE TIGHT T-SHIRT (THIN) FABRIC:POLYESTER/SPANDEX

ADULTS: KIDS:  
SIZE: S-5XL SIZE: 110-160



000 Black      416 Dark Blue      400 Royal Blue      929 Neon Pink      600 Red      807 Bright Orange

CBCK

CBCK

CBCK

CBCK

SILICONE PRINTING



907 Neon Orange      700 Golden Yellow      905 Neon Yellow      100 White      222 Melange Gray

■ 8361TL1026

LONG SLEEVE TIGHT T-SHIRT (THICK) FABRIC:82% NYLON,18% SPANDEX

ADULTS:  
SIZE: S-5XL



100 White      008 Livid Green      471 Blue/Gray      416 Dark Blue      000 Black

■ 3871101

PRO TIGHT T-SHIRT (THIN) FABRIC:POLYESTER/SPANDEX

ADULTS:  
SIZE: S-7XL



000 Black      400 Royal Blue      600 Red      905 Neon Yellow      100 White

■ 3881109

LONG SLEEVE TIGHT T-SHIRT (THICK) FABRIC:POLYESTER/SPANDEX  
ADULTS: \_\_\_\_\_  
SIZE: S-4XL



000 Black

100 White

■ 3891112 ■ 3893112

TECH FIT LONG SLEEVE T-SHIRT (THICK) FABRIC:POLYESTER/SPANDEX  
ADULTS: \_\_\_\_\_ KIDS: \_\_\_\_\_  
SIZE: S-7XL SIZE: 110-160



000 Black

400 Royal Blue

600 Red

100 White

■ 8161TL1004 ■ 8161TL3004

PRO TIGHT T-SHIRT (THICK) FABRIC:POLYESTER/SPANDEX  
ADULTS: \_\_\_\_\_ KIDS: \_\_\_\_\_  
SIZE: S-7XL SIZE: 130-160



000 Black

100 White

481 Royal Sky Blue

■ 8161TL1006 ■ 8161TL3006

TIGHT PANTS (THICK) FABRIC:POLYESTER/SPANDEX  
ADULTS: \_\_\_\_\_ KIDS: \_\_\_\_\_  
SIZE: S-7XL SIZE: 110-160



000 Black

Back

■ 3881110

TECH FIT LONG SLEEVE T-SHIRT (THIN) FABRIC:POLYESTER/SPANDEX  
ADULTS: \_\_\_\_\_  
SIZE: S-4XL



000 Black

100 White

■ 8161TL1001

LONG SLEEVE TIGHT T-SHIRT (THIN) FABRIC:POLYESTER/SPANDEX  
ADULTS: \_\_\_\_\_  
SIZE: S-5XL



000 Black

100 White

■ 3881108

LONG SLEEVE TIGHT T-SHIRT (THIN) FABRIC:POLYESTER/SPANDEX  
ADULTS: \_\_\_\_\_  
SIZE: S-4XL



000 Black

100 White

■ 8161TL1002

TIGHT PANTS FABRIC:POLYESTER/SPANDEX  
ADULTS: \_\_\_\_\_  
SIZE: S-5XL



000 Black

100 White

■ 8161TL1005 ■ 8161TL3005

TIGHT PANTS (THIN) FABRIC:POLYESTER/SPANDEX  
ADULTS: \_\_\_\_\_ KIDS: \_\_\_\_\_  
SIZE: S-7XL SIZE: 110-160



000 Black

Back

■ 3881111

TIGHT PANTS (THIN) FABRIC:POLYESTER/SPANDEX  
ADULTS: \_\_\_\_\_  
SIZE: S-7XL



000 Black

Back

■ 3881106 ■ 3883106

3/4 TIGHT PANTS FABRIC:POLYESTER/SPANDEX

ADULTS: KIDS:  
SIZE: S-7XL SIZE: 120-160



000  
Black



Back

■ 8152ZK1001

3/4 TRAINING TIGHT PANTS FABRIC:POLYESTER/SPANDEX

ADULTS:  
SIZE: S-7XL



100  
White



000  
Black

■ 8352TL1021

3/4 TIGHT PANTS FABRIC:88% POLYESTER,12% SPANDEX

ADULTS:  
SIZE: S-7XL



K - COOL



100  
White



416  
Dark Blue

■ 3871100

TACKLE SHORTS FABRIC:POLYESTER/SPANDEX

ADULTS:  
SIZE: S-4XL



000  
Black



Back



100  
White

■ 8251TL1001

TACKLE SHORTS FABRIC:POLYESTER/SPANDEX

ADULTS:  
SIZE: S-6XL



000  
Black

CBCK



481  
Royal Sky Blue

CBCK



600  
Red



100  
White

■ 8352TL1022

TACKLE SHORTS FABRIC:88% POLYESTER,12% SPANDEX

ADULTS:  
SIZE: S-7XL



K - COOL



100  
White



200  
Gray



000  
Black





■ 8352LB1027

BASKETBALL SET FABRIC:100% POLYESTER

ADULTS:  
SIZE: S-7XL



K - COOL



000 Black 100 White 405 Light Blue 469 Navy 600 Red Back

■ 8352LB1029

BASKETBALL SET FABRIC:100% POLYESTER

ADULTS:  
SIZE: S-7XL



K - COOL



000 Black 100 White 405 Light Blue 481 Royal Sky Blue 600 Red Back

■ 8452LB1043

BASKETBALL SET FABRIC:100% POLYESTER

ADULTS:  
SIZE: S-7XL

■ 8452LB3043

KIDS:  
SIZE: 110-170



500 Purple 000 Black 481 Royal Sky Blue 321 Light Water Green 125 White/Golden 104 White/Royal Blue 600 Red Back

■ 8352LB1028

BASKETBALL SET FABRIC:100% POLYESTER

ADULTS: KIDS:  
SIZE: S-7XL SIZE: 110-160



K - COOL



000 Black 100 White 432 Blue 469 Navy 656 Pink 600 Red 300 Green 500 Purple Back

■ 8352LB1030

BASKETBALL SET FABRIC:100% POLYESTER

ADULTS: KIDS:  
SIZE: S-7XL SIZE: 110-170



K - COOL



311 Green/White 610 Red/White 449 Light Blue/Dark Blue 424 Dark Blue/White Back

■ 8452LB1044

BASKETBALL SET FABRIC:100% POLYESTER

ADULTS:  
SIZE: S-7XL

■ 8452LB3044

KIDS:  
SIZE: 110-170



103 White/Black 104 White/Royal Blue 107 White/Red 600 Red 481 Royal Sky Blue 000 Black Back

■ 8352LB1031

BASKETBALL SET

ADULTS: KIDS:  
SIZE: S-7XL FABRIC:100% POLYESTER **K-COOL**



349 Space Dye Green  
000 Black  
100 White  
600 Red

■ 8152LB1004 ■ 8152LB3004

BASKETBALL SET--REVERSIBLE FABRIC:100% POLYESTER

ADULTS: KIDS:  
SIZE: S-7XL SIZE: 110-170



072 Black/Light Green  
409 Royal Blue/White  
610 Red/White  
820 Bright Orange/Black  
016 Black/Neon Pink

■ 8252LB1006 ■ 8352LB3038 (WITHOUT POCKET FOR KIDS ONLY)

BASKETBALL SET FABRIC:100% POLYESTER

ADULTS: KIDS:  
SIZE: S-7XL SIZE: 110-170



409 Royal Blue/White  
717 Yellow/Purple  
610 Red/White  
003 Black/White  
112 White/Dark Blue  
107 White/Red  
104 White/Royal Blue  
Back

■ 8252LB1001 ■ 8352LB3036 (WITHOUT POCKET FOR KIDS ONLY)

BASKETBALL SET FABRIC:100% POLYESTER

ADULTS: KIDS:  
SIZE: S-7XL SIZE: 110-160



716 Yellow  
401 Navy Blue  
000 Black  
104 White/Royal Blue  
481 Royal Sky Blue  
107 White/Red  
600 Red  
Back

■ 8252LB1002 ■ 8252LB3002

BASKETBALL SET FABRIC:100% POLYESTER

ADULTS: KIDS:  
SIZE: S-7XL SIZE: 110-160



610 Red/White  
107 White/Red  
003 Black/White  
409 Royal Blue/White  
104 White/Royal Blue  
103 White/Black  
Back

■ 8452LB1045 ■ 8452LB3045

BASKETBALL SET FABRIC:100% POLYESTER

ADULTS: KIDS:  
SIZE: S-7XL SIZE: 110-170



100 White  
000 Black  
401 Navy Blue  
481 Royal Sky Blue  
405 Light Blue  
600 Red  
Back

■ 8452LB1046

BASKETBALL SET FABRIC:100% POLYESTER

ADULTS:  
SIZE: S-7XL



103 White/Black  
716 Yellow  
107 White/Red  
000 Black  
481 Royal Sky Blue  
600 Red  
Back

■ 8252LB1003

BASKETBALL SET FABRIC:100% POLYESTER

ADULTS:  
SIZE: S-7XL



000 Black      100 White      600 Red      481 Royal Sky Blue

■ 8252LB1004

BASKETBALL SET FABRIC:100% POLYESTER

ADULTS:  
SIZE: S-7XL



416 Dark Blue      481 Royal Sky Blue      104 White/Royal Blue      107 White/Red      600 Red      000 Black

■ 8152LB1001 ■ 8352LB3039 (WITHOUT POCKET FOR KIDS ONLY)

BASKETBALL SET FABRIC:100% POLYESTER

ADULTS:      KIDS:  
SIZE: S-7XL      SIZE: 110-160



600 Red      405 Light Blue      808 Orange      481 Royal Sky Blue      300 Green      100 White

■ 8052LB1001 ■ 8352LB3040 (WITHOUT POCKET FOR KIDS ONLY)

BASKETBALL SET FABRIC:100% POLYESTER

ADULTS:      KIDS:  
SIZE: S-7XL      SIZE: 110-160



103 White/Black      003 Black/White      605 Dark Red      610 Red/White      107 White/Red

■ 8052LB1002

BASKETBALL SET FABRIC:100% POLYESTER

ADULTS:  
SIZE: S-7XL



401 Navy Blue      716 Yellow      600 Red      100 White      721 Yellow/Dark Blue

■ 3591052 ■ 8352LB3041 (WITHOUT POCKET FOR KIDS ONLY)

BASKETBALL SET FABRIC: 100% POLYESTER

ADULTS:      KIDS:  
SIZE: S-7XL      SIZE: 110-160



400 Royal Blue      000 Black      600 Red      716 Yellow      454 Azury      100 White      104 White/Royal Blue

**127-136**

**ATHLETIC, VOLLEYBALL,  
PING PONG, BADMINTON  
CYCLING**

■ 8353QB1008

■ 8353QB2008

PING PONG/BADMINTON SET FABRIC:100% POLYESTER

MEN: SIZE: S-7XL  
WOMEN: SIZE: S-5XL



000  
Black

100  
White

4021  
Industrial Blue

600  
Red

716  
Yellow

■ 8451QB1030

PING PONG/BADMINTON SET FABRIC:100% POLYESTER

ADULTS: SIZE: 2XS-5XL



600  
Red

100  
White

000  
Black

500  
Purple

Back

■ 8451QB1031

PING PONG/BADMINTON SET FABRIC:100% POLYESTER

ADULTS: SIZE: 2XS-5XL



600  
Red

402  
Lake Blue

416  
Dark Blue

500  
Purple

Back





■ 8351QB1009

TRAINING SET FABRIC A: 100% POLYESTER, FABRIC B: 92% POLYESTER, 8% SPANDEX  
MEN:  
SIZE: S-7XL



015  
Black/Gray



107  
White/Red



428  
Dark Blue/Royal Blue



132  
White/Light Blue

■ 8351QB2009

TRAINING SET TOP FABRIC A: 100% POLYESTER, TOP FABRIC B: 92% POLYESTER, 8% SPANDEX  
WOMEN:  
SHORTS FABRIC: 80% NYLON, 20% SPANDEX  
SIZE: S-5XL



015  
Black/Gray



107  
White/Red



428  
Dark Blue/  
Royal Blue



132  
White/Light Blue

### ■ 8351QB1010

TRAINING SET FABRIC A: 100% POLYESTER, FABRIC B: 92% POLYESTER, 8% SPANDEX

MEN:

SIZE: S-7XL



481 Royal Sky Blue    500 Purple    600 Red    609 Wine Red    716 Yellow    305 Light Turquoise

### ■ 8351QB2010

TRAINING SET TOP FABRIC A: 100% POLYESTER, TOP FABRIC B: 92% POLYESTER, 8% SPANDEX  
SHORTS FABRIC: 80% NYLON, 20% SPANDEX

WOMEN:

SIZE: S-5XL



481 Royal Sky Blue    500 Purple    600 Red    609 Wine Red    716 Yellow    305 Light Turquoise

### ■ 3802254

TRAINING SET FABRIC A: 100% POLYESTER  
FABRIC B: POLYESTER/SPANDEX

WOMEN: (S-155CM)

SIZE: S-4XL

(Applicable for Volleyball, Tennis, Table Tennis)



1010 Dark Blue/Rose    610 Red/White    713 Yellow/Red    107 White/Red

### ■ 3801252

TRAINING SET FABRIC A: 100% POLYESTER  
FABRIC B: POLYESTER/SPANDEX

MEN:

SIZE: S-7XL

(Applicable for Volleyball, Tennis, Table Tennis, Football, Handball)



613 Red/Yellow    107 White/Red    430 Royal Blue/Dark Blue    449 Light Blue/Dark Blue

### ■ 3801253

TRAINING SET FABRIC A: 100% POLYESTER  
FABRIC B: POLYESTER/SPANDEX

MEN:

SIZE: S-7XL

(Applicable for Volleyball, Tennis, Table Tennis, Football, Handball)



613 Red/Yellow    430 Royal Blue/Dark Blue    449 Light Blue/Dark Blue    107 White/Red

### ■ 3802255

TRAINING SET FABRIC A: 100% POLYESTER  
FABRIC B: POLYESTER/SPANDEX

WOMEN: (S-155CM)

SIZE: S-4XL

(Applicable for Volleyball, Tennis, Table Tennis)



1010 Dark Blue/Rose    610 Red/White    713 Yellow/Red    107 White/Red

■ 8253QB1001 ■ 8253QB2001

ATHLETIC TANK TOP AND SHORTS SET FABRIC A:100% POLYESTER  
FABRIC B:POLYESTER/SPANDEX



K - COOL

MEN: SIZE: S-5XL  
WOMEN: SIZE: S-3XL



401 Navy Blue ●●  
503 Royal Purple ●●  
808 Orange ●●  
600 Red ●●

■ 3871010 ■ 3892065

ATHLETIC TANK TOP AND SHORTS SET FABRIC:100% POLYESTER



K - COOL



MEN: (S-165CM) SIZE: S-5XL  
WOMEN: (S-155CM) SIZE: S-5XL



400 Royal Blue ●●  
713 Yellow/Red ●●  
613 Red/Yellow ●●

■ K15Z704

CYCLING TOP FABRIC:100% POLYESTER



ADULTS:  
SIZE: S-3XL



104 White/Royal Blue  
109 White/Yellow  
127 White/Neon Green  
156 White/Orange Red

■ K15Z740

CYCLING SHORTS FABRIC:80% NYLON,20% SPANDEX



ADULTS:  
SIZE: S-3XL



000 Black

■ 8351BX1004

TRAINING VEST FABRIC:100% POLYESTER



K - COOL

ADULTS:  
SIZE: 2XS-5XL



328 Mint Green  
401 Navy Blue  
500 Purple  
600 Red

■ 8351BX1003

TRAINING VEST FABRIC:100% POLYESTER



K - COOL

ADULTS:  
SIZE: 2XS-5XL



452 blue  
500 Purple  
808 Orange  
600 Red

■ 8351DK1007

TRAINING SHORTS SHELL FABRIC:92% POLYESTER,8% SPANDEX  
LINING:100% POLYESTER

ADULTS:  
SIZE: S-5XL



000 Black  
Bock  
201 Dark Gray



REFLECTIVE PRINT



DOWNWASKE

137-144



■8261MJ1002

DOWN VEST FABRIC:100% NYLON  
ADULTS:  
SIZE: S-7XL(BLACK) S-5XL(OTHERS)



000 Black      202 Light Gray      214 Khaki



■3891414

DOWN VEST FABRIC:100% NYLON  
ADULTS:  
SIZE: S-7XL(BLACK) S-5XL(OTHERS COLORWAYS)



416 Dark Blue      200 Gray      000 Black      Back

■8061MJ1001

DOWN VEST FABRIC A:100% NYLON  
FABRIC B:100% POLYESTER  
ADULTS:  
SIZE:S-7XL(BLACK,DARK BLUE) SIZE:S-5XL(KHAKI,WHITE)



000 Black      214 Khaki      416 Dark Blue      Back

■3891415

DOWN VEST FABRIC:100% POLYESTER  
ADULTS:  
SIZE: S-7XL(BLACK) S-5XL(OTHERS COLORWAYS)



416 Dark Blue      100 White      000 Black      Back

■8361YR1022

LIGHT DOWN JACKET FABRIC:100% POLYESTER  
ADULTS:  
SIZE: S-7XL



214 Khaki      Back      L02 Hazo Blue      203 Gray/Blue      416 Dark Blue

Stitching Label

■8061YR1003

LIGHT DOWN JACKET FABRIC:100% POLYESTER  
ADULTS:  
SIZE:S-7XL(BLACK,DARK BLUE) SIZE:S-5XL(WHITE)



416 Dark Blue      100 White      000 Black      Back



■ 8161YR1001 ■ 8161YR2001

DOWN JACKET FABRIC:100% POLYESTER

MEN: SIZE:S-5XL  
WOMEN: SIZE:S-5XL



90% DOWN



Reflective logo



416 Dark Blue



000 Black



Back



600 Red



171 Beige

■ 8161YR1002

DOWN JACKET FABRIC:100%POLYESTER

ADULTS:  
SIZE: S-5XL



90% DOWN



000 Black



Back



201 Dark Gray



217 Brown

■ 8361YR3023

LONG DOWN JACKET FABRIC:100% POLYESTER

KIDS:  
SIZE:110-160



85% DOWN



Reflective logo



000 Black



416 Dark Blue



Back

■ 3893416

LONG DOWN JACKET FABRIC:100% NYLON

KIDS:  
SIZE: 120-160,110-160(BLACK COLOR ONLY)



400 Royal Blue



600 Red



000 Black



Back

■ 8261YR1013

LONG DOWN JACKET FABRIC:100% POLYESTER

ADULTS:  
SIZE: S-7XL(BLACK,GRAY) S-5XL(WHITE)



DOWN



100 White



200 Gray



000 Black



Back

■ 8061YR1002

LONG DOWN JACKET FABRIC:100% POLYESTER

ADULTS:  
SIZE:S-7XL



90% DOWN



000 Black



Back



200 Gray



■ 8161YR1003

LONG DOWN JACKET FABRIC:100% POLYESTER

ADULTS:  
SIZE: S-5XL



90% DOWN



Heat-reflecting  
Quantum Membrane



600  
Red

201  
Dark Gray

416  
Dark Blue

000  
Black

Back

Reflective logo

■ 8161YR2002

WOMEN'S LONG DOWN JACKET FABRIC:100% POLYESTER

ADULTS:  
SIZE: S-5XL



90% DOWN



Heat-reflecting  
Quantum Membrane



100  
White

600  
Red

000  
Black

Back

Reflective logo

# PADDING JACKET

145-154





■ 8161MJ1001

PADED VEST FABRIC:100% POLYESTER

ADULTS:

SIZE: S-7XL, S-5XL(RED, SAPPHERE BLUE)



000  
Black

202  
Light Gray

416  
Dark Blue

417  
Sapphire Blue

600  
Red

CBCK

CBCK

■ 8161MJ2001

WOMEN'S PADED VEST

FABRIC:100% POLYESTER

ADULTS:

SIZE: S-3XL

■ 8161MJ3001

PADED VEST

FABRIC:100% POLYESTER

KIDS:

SIZE: 110-160



000  
Black

202  
Light Gray



000  
Black

Back

■ 8261MJ1007

PADED VEST FABRIC:100% NYLON

ADULTS:

SIZE:S-7XL, S-5XL(WHITE ONLY)



000  
Black

469  
Navy

100  
White

Back

棉服  
PADDING JACKET

■ 8161MF1005

PADDED JACKET FABRIC:100% POLYESTER

ADULTS:  
SIZE:S-5XL



100 White    416 Dark Blue    201 Dark Gray    000 Black    Back

■ 8161MF1001

PADDED JACKET FABRIC:100% POLYESTER

ADULTS:  
SIZE:S-7XL



201 Dark Gray    416 Dark Blue    000 Black    Back

■ 3891417    ■ 3893417

PADDED JACKET FABRIC:100% POLYESTER

ADULTS:    KIDS:  
SIZE: S-7XL    SIZE: 110-160



000 Black    416 Dark Blue    Back    000 Black    416 Dark Blue    Back

■ 7361MF1027    ■ 7361MF3027

PADDED JACKET FABRIC:100% POLYESTER

ADULTS:    KIDS:  
SIZE: S-7XL    SIZE: 120-160    (WITHOUT LOGO ON BACK)





■ 8261MF1013

PADED JACKET FABRIC:100% POLYESTER

ADULTS:  
SIZE:S-7XL



000  
Black



424  
Dark Blue/White



Back

■ 8261MF1014 ■ 8261MF3014

LONG PADED JACKET FABRIC:100% POLYESTER

ADULTS: SIZE:S-7XL  
KIDS: SIZE:110-160



000  
Black



424  
Dark Blue/White



Back

■ 3883405

PADED JACKET FABRIC:100% POLYESTER

KIDS:  
SIZE: 120-160



000  
Black



424  
Dark Blue/White



100  
White



012  
Black/Neon Yellow



Back





■ 8061MF1003

MID-LENGTH PADDED JACKET FABRIC:100% POLYESTER

ADULTS:

SIZE: S-5XL(WHITE) S-7XL(BLACK,SILVER)



100  
White



900  
Silver



000  
Black



Back

■ 8061MF1004

LONG PADDED JACKET FABRIC:100% POLYESTER

ADULTS:

SIZE: S-7XL S-5XL(SILVER)



100  
White



900  
Silver



000  
Black



Back

155-178



ME

■ 8453PL1068 ■ 8453PL2068

POLO SHIRT FABRIC:77% NYLON,23% SPANDEX

MAN: WOMAN:  
SIZE: S-5XL SIZE: S-3XL



471 Blue/Gray ●●  
Back ●●  
405 Light Blue ●●  
514 Light Purple ●●  
200 Gray ●

- Textured fabric. Delicate and smooth. It's refreshing, skin-friendly and breathable.
- The garment is cut in a three-dimensional manner, giving it a clean and elegant look.
- The back is designed with laser perforations to enhance breathability.
- The collar and cuffs feature a light and thin stripe design, adding details and showcasing quality.

■ 8453PL1069 ■ 8453PL2069

POLO SHIRT FABRIC:88% NYLON,12% SPANDEX

MEN: WOMEN:  
SIZE: S-5XL SIZE: S-3XL



100 White ●●  
Back ●●  
000 Black ●●  
404 Sky Blue ●●  
709 Apricot ●●  
568 Turquoise ●

- Cool embossed texture. Strong breathability, quick-drying, refreshing and skin-friendly.
- The garment is cut in a three-dimensional manner, giving it a clean and elegant look.
- The front features a heat-sealed button placket and contrasting letter print design, offering a minimalist embellishment while showcasing quality.
- Suitable for various occasions.

★ ■ 3891570 ■ 3892570

POLO SHIRT(WHITE COLOR USE DIFFERENT FABRIC) FABRIC:NYLON/SPANDEX

MEN: WOMEN:  
SIZE: S-5XL SIZE: S-4XL



000 Back ●●  
100 White ●●  
416 Dark Blue ●●  
417 Sapphire Blue ●●  
641 Water Red ●●

★ ■ 8353PL1056 (KELME PREMIUM)

POLO SHIRT FABRIC:88% NYLON,12% SPANDEX

ADULTS:  
SIZE: S-5XL



100 White ●●  
404 Sky Blue ●●  
469 Navy ●

★ ■ 8353PL1067 ■ 8353PL2067 (KELME PREMIUM)

POLO SHIRT(LIGHT) FABRIC:88% NYLON,12% SPANDEX

MEN: WOMEN:  
SIZE: S-5XL SIZE: S-3XL



321 Light Water Green ●●  
405 Light Blue ●●  
202 Light Gray ●●  
201 Dark Gray ●●  
514 Light Purple ●

★ ■ 3891569

POLO SHIRT FABRIC:COTTON/POLYESTER/SPANDEX

ADULTS:  
SIZE: S-5XL



400 Royal Blue ●●  
416 Dark Blue ●●

■ 8353PL1070 ■ 8353PL2070

POLO SHIRT FABRIC:100% POLYESTER

MEN: SIZE:S-5XL  
WOMEN: SIZE:S-3XL



514 Light Purple ●●  
416 Dark Blue ●●  
471 Blue/Gray ●  
044 Medium Gray ●●

★ ■ 8253PL1001

POLO SHIRT FABRIC:75.5% NYLON,24.5% SPANDEX

ADULTS:  
SIZE: S-5XL



000 Black ●●  
100 White ●●  
200 Gray ●



THE CLEAN VERSATILE LAPEL COLLAR CHIC & WITH A SENSE OF BUSINESS. LASER-CUT SEAMLESS TECHNOLOGY GIVES YOU SMOOTHER TOUCH THAN TRADITIONAL SEWING. HIGH-QUALITY FABRIC COOL & SMOOTH, MOISTURE-WICKING, QUICK-DRY & BREATHABLE.

★ ■ 8353PL1054 ■ 8353PL2054 (KELME PREMIUM)

POLO SHIRT FABRIC:76.5% NYLON,23.5% SPANDEX

MEN: SIZE: S-5XL  
WOMEN: SIZE: S-3XL



100 White ●●  
583 Bean Green ●●  
404 Sky Blue ●●  
202 Light Gray ●



LASER CUTTING AND HEAT-SEAL

★ ■ 8353PL1062

LONG SLEEVE POLO SHIRT

ADULTS: FABRIC:88% NYLON,12% SPANDEX  
SIZE: S-5XL

★ ■ 3891571 ■ 3892571

LONG SLEEVE POLO SHIRT

MEN: SIZE: S-5XL  
WOMEN: SIZE: S-4XL  
FABRIC:COTTON/POLYESTER/SPANDEX



000 Black ●●  
100 White ●●  
Back ●●  
100 White ●●  
416 Dark Blue ●●

■ 8453TX1183 ■ 8453TX2183

T-SHIRT FABRIC:87% NYLON,13% SPANDEX

MEN: SIZE: S-5XL  
WOMEN: SIZE: S-3XL



000 Black ●●  
202 Light Gray ●●  
305 Light Turquoise ●  
405 Light Blue ●●  
514 Light Purple ●  
Back ●●

- Made with high-quality functional fabric, it is quick-drying and provides a dry and comfortable feeling.
- Simple and elegant. Casual and fitted.
- The back logo is designed with reflective printing to enhance safety during nighttime activities while still maintaining a fashionable look.

★ ■ 8353TX2031

WOMEN'S T SHIRT FABRIC:100% COTTON

ADULTS:  
SIZE: S-3XL



B50 Bright White ●●  
007 Matte Green ●●  
N00 Midnight Blue ●●

★ ■ 8363CK1055 ■ 8363CK2055

TRAINING PANTS FABRIC :95% POLYESTER,5% SPANDEX

MEN: SIZE: S-5XL  
WOMEN: SIZE: S-4XL

I II III IV V  
THIN THICK



SOFT & SMOOTH KNITTED FABRIC,  
COMFORTABLE & FLEXIBLE.  
EXQUISITE HIGH QUALITY PRINTING .  
SIMPLE & ELEGANT CUTTING FITS  
YOU WELL.

★ ■ 8363CK1056 ■ 8363CK2056

TRAINING PANTS FABRIC :100% POLYESTER

MEN: SIZE: S-5XL  
WOMEN: SIZE: S-4XL

I II III IV V  
THIN THICK



STRAIGHT PATTERN WITH HIGH-END KNITTED  
FABRIC, SUPPORTIVE & FITS YOU WELL.  
3D CUTTING AND HEAT-SEALED TAPES ON  
BOTH SIDES OUTLINE THE LEG SHAPE.  
PROFESSIONAL ATHLETIC.  
REGULAR FIT ADAPTS TO VARIOUS BODY  
FIGURES.  
BEST OPTION ON & OFF FIELD.

★ ■ 3891374

TRAINING PANTS FABRIC:COTTON/POLYESTER/SPANDEX

ADULS: SIZE: S-5XL

I II III IV V  
THIN THICK



RIBBED WAISTBAND.  
SLANTED SIDE POCKETS.  
SUPERIOR FABRIC, COMFORTABLE & SOFT.  
SUITABLE FOR EVERYDAY WEAR AND WORKOUTS.

★ ■ 8163CK1003 ■ 8163CK2003

WOVEN PANTS(WITH BRUSH)  
FABRIC:POLYESTER/SPANDEX

MEN: SIZE: S-5XL  
WOMEN: SIZE: S-3XL



1. COMPOUND WOVEN FABRIC,  
THERMAL INSULATED, WINDPROOF  
TO KEEP YOU WARM.  
2. RELECTIVE PRINTINGS.  
3. WATER-REPELLENT & ANTI-STATIC.  
4. SPORTY LIFESTYLE PANTS, A  
NECESSITY IN WINTER.

★ ■ 3891375 ■ 3892375

TRAINING PANTS FABRIC:POLYESTER/SPANDEX

MEN: SIZE: S-5XL  
WOMEN: SIZE: S-4XL

I II III IV V  
THIN THICK



ELASTIC WAISTBAND.  
SLANTED POCKETS WITH CONCEALED ZIPPERS.  
SUPERIOR FABRIC, COMFORTABLE & SOFT.  
SUITABLE FOR EVERYDAY WEAR AND WORKOUTS.

★ ■ 8251CK1002

TRAINING PANTS FABRIC:COTTON/SPANDEX

ADULS: SIZE: S-5XL

I II III IV V  
THIN THICK



HIGH-END KNITTED FABRIC, COMFORTABLE & WARM.  
3D CUTTING OUTLINE THE LEG SHAPE.  
REGULAR FIT ADAPTS TO VARIOUS BODY FIGURES.  
SUITABLE FOR EVERYDAY WEAR & WORKOUTS.

★ ■8363CK1057 ■8363CK2057

WOVEN PANTS FABRIC :94% POLYESTER,6% SPANDEX

MEN: SIZE: S-5XL  
WOMEN: SIZE: S-4XL



000 Black  
401 Navy Blue  
583 Bean Green  
Back



WOVEN FABRIC BRUSHED INSIDE, SOFT & COMFORTABLE.  
3D CUTTING OUTLINE THE LEG SHAPE.  
REGULAR FIT ADAPTS TO VARIOUS BODY FIGURES.  
SUITABLE FOR EVERYDAY WEAR & WORKOUTS.

★ ■8253CK1010

WOVEN PANTS FABRIC :NYLON/SPANDEX

MEN: SIZE: S-5XL



000 Black  
401 Navy Blue  
102 Off White  
308 Army Green



WATER-REPELLENT & ANTI-STATIC, SOFT & COMFORTABLE;  
SEAMLESS BONDING ENHANCING DURABILITY, WATERPROOFNESS, AND  
WEAR RESISTANCE.  
WATERPROOF ZIPPER, SEAMLESS FLY AND WAISTBAND.  
STRAIGHT PATTERN WITH 3D CUTTING, VERSATILE FOR COMMUTING,  
SUITABLE FOR DAILY WEAR AND BUSINESS LIFESTYLE.

★ ■8463CK1077 ■8463CK2077

WOVEN PANTS FABRIC:92% NYLON,8% SPANDEX

MEN: SIZE: S-5XL  
WOMEN: SIZE: S-3XL



000 Black  
201 Dark Gray  
416 Dark Blue

- Made with textured fabric, featuring excellent moisture-wicking and quick-drying capabilities.
- Sharp and precise tailoring, with a sleek and refined minimalist style.
- Convenient for both everyday activities and casual wear.

★ ■8451CK1075

WOVEN PANTS FABRIC:86% NYLON,14% SPANDEX

ADULTS: SIZE: 2XS-7XL



000 Black  
200 Gray  
202 Light Gray  
416 Dark Blue

★ ■8353DK1053 (KELME PREMIUM)

WOVEN SHORTS FABRIC:100% POLYESTER

ADULTS: SIZE: S-5XL



K - COOL



000 Black  
100 White  
341 Light Army Green  
401 Navy Blue  
Back

★ ■8353DK1052 (KELME PREMIUM)

WOVEN SHORTS FABRIC:86% NYLON,14% SPANDEX

ADULTS: SIZE: S-5XL



K - COOL



000 Black  
201 Dark Gray  
401 Navy Blue



★ ■ 8453WT1099

WOVEN LIGHT JACKET FABRIC:89% NYLON,11% SPANDEX

ADULTS:  
SIZE: 2XS-5XL



ANTI-UV



305  
Light Turquoise



102  
Off White



L03  
Sky Cyan Blue

- UPF50+ sun protection, easy and safe for outdoor activities.
- Featuring a three-dimensional cut and made from classic fabrics.
- Shoulder and side laser punching design enhances breathability without compromising style.
- Reflective stripe design on the front placket enhances safety during nighttime activities.

★ ■ 8453WT1098

WOVEN LIGHT JACKET FABRIC:89% NYLON,11% SPANDEX

ADULTS:  
SIZE: 2XS-5XL



200  
Gray



102  
Off White



404  
Sky Blue

- UPF50+ sun protection, easy and safe for outdoor activities.
- Made with a classic woven four-way stretch fabric, featuring a three-dimensional cut.
- Front chest and back feature logo and reflective print design, adding a sense of detail with a minimalist and understated style.
- Suitable for various scenarios, convenient for both active and everyday wear.

★ ■ 8463WT1097 ■ 8463WT2097

WOVEN JACKET FABRIC:92% POLYESTER,8% SPANDEX

MAN: SIZE: S-5XL  
WOMAN: SIZE: S-3XL



471  
Blue/Gray



2005  
Gray Pink



200  
Gray



000  
Black



Back

- Made with textured fabric, featuring excellent moisture-wicking and quick-drying capabilities.
- Shoulder reflective stripe design enhances safety during nighttime activities without compromising style.
- The three-dimensional cut provides a more comfortable and stylish fit.

★ ■ 8353WT1037 ■ 8353WT2037 (KELME PREMIUM)

WOVEN LIGHT JACKET FABRIC:87% NYLON,13% SPANDEX

MAN: SIZE: S-5XL  
WOMEN: SIZE: S-3XL  
(WATERPROOF)



ANTI-UV



202  
Light Gray



404  
Sky Blue



416  
Dark Blue



380  
Grayish Green



500  
Purple

- UPF50+ sun protection, easy and safe for outdoor activities.
- Made with a classic woven four-way stretch fabric, featuring a three-dimensional cut.
- Front chest and back feature logo and reflective print design, adding a sense of detail with a minimalist and understated style.
- Suitable for various scenarios, convenient for both active and everyday wear.

★ ■ 8353WT2036 (KELME PREMIUM)  
WOMEN'S WOVEN LIGHT JACKET FABRIC:100% NYLON  
WOMEN:  
SIZE: S-3XL  
(WATERPROOF)



1009 Pinkish Orange    202 Light Gray    405 Light Blue    514 Light Purple

★ ■ 8353WT1035 (KELME PREMIUM)  
WOVEN LIGHT JACKET FABRIC:100% NYLON  
MEN:  
SIZE: S-5XL  
(WATERPROOF)



000 Black    202 Light Gray    201 Dark Gray    416 Dark Blue

★ ■ 8353WT1038 (KELME PREMIUM)  
WOVEN LIGHT JACKET FABRIC:100% NYLON  
ADULTS:  
SIZE: S-5XL  
(WATERPROOF)



000 Black    202 Light Gray    214 Khaki    309 Blackish Green    471 Blue/Gray

★ ■ 3891235  
WOVEN TRAINING JACKET WITH HOOD FABRIC:100% POLYESTER  
ADULTS:  
SIZE: S-5XL



000 Black    416 Dark Blue    600 Red



LOOSE FITTED, SUITABLE FOR DAILY WEAR AND SPORTS.  
IT IS MADE WITH HIGH-QUALITY TECH-INSPIRED FABRIC, COMBINED WITH HIGH-QUALITY MATTE FILM, PROVIDING WINDPROOF AND WATERPROOF FEATURES. THE MECHANICAL ELASTICITY ENSURES COMFORTABLE MOVEMENT. THE USE OF HIGH-QUALITY ACCESSORIES HIGHLIGHTS THE QUALITY IN THE DETAILS, COMBINING FASHION AND LEISURE WITH A TOUCH OF BUSINESS STYLE.

★ ■ 8353WT1039 (KELME PREMIUM)  
WOVEN LIGHT JACKET FABRIC:93% NYLON,7% SPANDEX  
ADULTS:  
SIZE: S-5XL  
(WATERPROOF)



000 Black    100 White



Reflective Fabric

★ ■ 3891232  
WOVEN TRAINING JACKET WITH HOOD FABRIC:100% POLYESTER  
ADULTS:  
SIZE: S-5XL



000 Black    416 Dark Blue

LOOSE FITTED, FOR DAILY WEAR AND SPORTS.  
SUPERIOR TECHNOLOGY FABRIC, COMPOUND WITH MATTE MEMBRANE, WINDPROOF & WATERPROOF. MECHANICAL ELASTICITY PROVIDES COMFORTABLE MOVEMENT.  
HIGH-QUALITY ACCESSORIES COMBINE FASHION & LEISURE WITH A TOUCH OF BUSINESS STYLE.



★ ■8163WT1005 ■8163WT2005

WOVEN TRAINING JACKET  
FABRIC:POLYESTER/SPANDEX

MEN: WOMAN:  
SIZE: S-5XL SIZE: S-3XL



000  
Black

200  
Gray



COMPOUND WOVEN FABRIC THAT PROVIDES INSULATION AND IS WINDPROOF TO KEEP WARM. REFLECTIVE PRINTINGS TO ENSURE SAFETY FOR WORKOUT DURING NIGHTTIME. WATER-REPELLENT ANTI-STATIC.

★ ■3891236

WOVEN TRACKSUIT FABRIC:100% POLYESTER

ADULTS:  
SIZE: S-5XL



000  
Black



416  
Dark Blue

CLASSIC CAMOUFLAGE CONTRAST, SPORTY & CHIC; SUPERIOR FABRIC WITH SPECIAL TEXTURE; TEAR-RESISTANT FOR HIGH-INTENSITY ACTIVITIES

★ ■3891234

WOVEN TRAINING JACKET FABRIC:90%NYLON/10%SPANDEX

ADULTS:  
SIZE: S-5XL



000  
Black



010  
Black/Neon Green



400  
Royal Blue



600  
Red

SOFTSHELL FABRIC WITH SPECIAL TEXTURE EXCELLENT TEAR RESISTANCE AND ALLOWS FOR HIGH-INTENSITY MOVEMENT WITHOUT ONSTRAINT. LOOSE FITTED SUITABLE FOR DAILY WEAR AND SPORTS.

■8463WT1100 ■8463WT2100

TRAINING JACKET FABRIC:87% NYLON,13% SPANDEX

MAN: WOMAN:  
SIZE: S-5XL SIZE: S-3XL



100  
White

514  
Light Purple

432  
Blue

200  
Gray

000  
Black

★ ■8363WT1058 ■8363WT2058

KNITTED JACKET FABRIC:87% POLYESTER,13% SPANDEX

MEN: WOMEN:  
SIZE: S-5XL SIZE: S-4XL



405  
Light Blue

000  
Black

217  
Brown

514  
Light Purple

New double-sided fine needle stitching small staircase texture fabric, Stretchy, soft and comfortable. Stand-up collar suitable for multi-season outfit. Regular fitting caters to various body figures.

★ ■8363WT1059 ■8363WT2059

KNITTED JACKET FABRIC:100% POLYESTER

MEN: WOMEN:  
SIZE: S-5XL SIZE: S-4XL



211  
Light Tan

401  
Navy Blue

201  
Dark Gray

600  
Red

L05  
Ice Blue

High-end knitted fabric, providing a supportive and slim fit. Heat-sealed tapes at side pockets shape your figure. Showcasing a professional sports style. Stand-up collar suitable for multi-season outfit. Regular fitting caters to various body figures on-field and off-field.

★ ■ 3892237

TRAINING JACKET FABRIC:POLYESTER/SPANDEX

WOMEN:

SIZE: S-4XL



000  
Black

100  
White

416  
Dark Blue

600  
Red

High-stretchy fabric brushed inside, soft & warm, comfortable even during high-intensity activities. Side pockets with contrast zippers. Slim fitted for everyday wear and workouts.

★ ■ 3891372 ■ 3892372

TRAINING JACKET FABRIC:86%NYLON/14%SPANDEX

MEN: SIZE: S-5XL  
WOMEN: SIZE: S-4XL



416  
Dark Blue



600  
Red



REFLECTIVE LOGO

Sporty & fitted, for daily wear and sports. The front chest with high-quality reflective logo, enhancing safety during nighttime workouts. Pockets with high-quality invisible zippers for easy storage of personal items.

★ ■ 3891371 ■ 3892371

TRAINING JACKET FABRIC:POLYESTER/SPANDEX

MEN: SIZE: S-5XL  
WOMEN: SIZE: S-4XL



100  
White



416  
Dark Blue



600  
Red

Sporty & fitted, for daily wear and sports. High quality printing on left chest. Pockets with high-quality hidden zippers.

★ ■ 3891373

TRAINING JACKET FABRIC:78%COTTON/15%POLYESTER/6%SPANDEX

ADULTS:  
SIZE: S-5XL



000  
Black

100  
White

222  
Melange Gray

400  
Royal Blue

Ribbed collar with contrast color. Sporty & fitted cutting suitable for both daily wear and sports activities. High-quality printed zipper. Pocket lining with contrast color subtly visible, unique and chic.

★ ■ 8363WT1068 ■ 8363WT2068

FUNCTIONAL JACKET FABRIC:100% POLYESTER

MEN: SIZE: S-4XL  
WOMAN: SIZE: S-3XL



214  
Khaki



471  
Blue/Gray



000  
Black



504  
Smokey Purple

3-PROOF WOVEN FABRIC KEEPS THE BODY DRY AND COMFORTABLE EVEN FOR OUTDOOR ACTIVITIES IN LIGHT RAIN. DETACHABLE WINDPROOF HOOD CAN BE ADJUSTED TO EFFECTIVELY BLOCK COLD AIR. REFLECTIVE PRINTING AT THE BACK ENHANCES SAFETY DURING NIGHTTIME ACTIVITIES.

★ ■ 8353MJ1012 (KELME PREMIUM)

WOVEN VEST FABRIC:87% NYLON,13% SPANDEX  
ADULTS:  
SIZE: S-5XL  
(WATERPROOF)



000  
Black



202  
Light Gray

★ ■ 8263MJ1009

DOWN VEST FABRIC:NYLON/SPANDEX  
ADULTS:  
SIZE: S-3XL



000  
Black



416  
Dark Blue



100  
White

- COMPARING WITH THE TRADITIONAL SEWING WORKMANSHIP, THE FABRIC ADOPTS COMPUTER PROGRAMMING ONE-TIME SEAMLESS TECHNOLOGY,WHICH GREATLY IMPROVE THE PROBLEM OF DOWN DRILL THROUGH THE FABRIC,AND MAKE IT MORE COMFORTABLE TO WEAR.WITH THE USAGE OF THE CLASSIC FOOTBALL HEXAGON TEXTURE, BETTER INTEGRATE FOOTBALL ELEMENTS INTO DAILY LIFE.
- THE FILLING DOWN MAKES THE VEST WARM AND LIGHT.
- SIDE CUT&SAW USE ELASTIC KNITTED FABRIC, MAKE IT FREE TO MOVE.
- MINIMALIST DESIGN,3D CUTTING, EXQUISITE WORKMANSHIP,WATER REPELLENT FABRIC TREATMENT, EASY MATCHING

★ ■ 8363HX1001

SKI JACKET FABRIC:100% POLYESTER  
ADULTS:  
SIZE: 2XS-4XL



107  
White/Red



409  
Royal Blue/White



- 3-LAYER COMPOUND ACRYLIC-COATED ULTRA-HIGH MOLECULAR MEMBRANE REACHING INTERNATIONAL STANDARD: 5K/5K;US STANDARD OF 15000.
- OPTIMIZED WATERPROOF AND BREATHABLE STRUCTURE, CATERING TO THE NEEDS OF BEGINNER TO INTERMEDIATE SKIERS.
- MATTE FINISH WATERPROOF ZIPPER
- HARDENED SPONGE PADDING INSIDE SHOULDERS TO TO PROTECT YOUR KEY JOINTS.
- 3M LASER-CUT REFLECTIVE FILM ON THE SHOULDERS FOR HIGH VISIBILITY ON THE SLOPES.

★ ■ 8363WT1070

OUTDOOR JACKET (TWO IN ONE,FLEECE INNER)  
FABRIC:OUTSIDE JACKET FABRIC:100% POLYESTER INNER JACKET FABRIC:100% POLYESTER  
ADULTS:  
SIZE: 2XS-4XL



600 Red



202 Light Gray



708 Ginger Yellow

- PU2.0 HIGH-QUALITY POLYMER BREATHABLE MEMBRANE INTERNATIONAL STANDARD: 5K/5K;US STANDARD OF 15000.
- SEAM BONES SEALED WITH A 360-DEGREE HIGH-DENSITY ADHESIVE FILM, MAKING IT EASY TO HANDLE MEDIUM TO HEAVY RAIN DURING OUTDOOR ACTIVITIES SUCH AS CAMPING AND TRAVELING BELOW AN ALTITUDE OF 6,000 METERS.
- BUILT-IN HONEYCOMB STRUCTURE FOR ANTI-STATIC AND THERMAL INSULATION, ALONG WITH A DETACHABLE STANDARD 144F ULTRA-FINE FLEECE LINING.
- VERSATILE FOR COMMUTING.

★ ■8263YR1011

TWO-PIECE JACKET

OUTSIDE JACKET FABRIC:100% POLYESTER  
INNER DOWN JACKET:100% NYLON

ADULTS:  
SIZE: S-3XL



000  
Black

381  
Moss Green

- DOUBLE-LAYER COMPOUND HIGH-QUALITY POLYMER MEMBRANE, WATER REPELLENT & ANTI-STATIC.
- ANTI-STATIC AND THERMAL INSULATION LINING, PREMIUM MAGNETIC SNAP BUTTONS AT THE COLLAR WITH A UNIQUE CLEAN BUCKLE DESIGN.
- BUILT-IN DOWN FILLING COMBINED WITH THE OUTER FABRIC, WITH A CLO RATING ABOVE 2, EASILY WITHSTANDING EXTREME COLD WEATHER.
- SEAMLESS BONDING ENHANCING DURABILITY, WATERPROOFNESS, AND WEAR RESISTANCE.
- MINIMALIST DESIGN, 3D CUT, EXQUISITE CRAFTSMANSHIP, SUITABLE FOR WHITE-COLLAR FASHION & VERSATILE COMMUTING.

★ ■8263YR1015 ■8263YR2015

FUNCTIONAL JACKET(TWO IN ONE,DOWN INNER)

OUTSIDE JACKET FABRIC:100% POLYESTER;INNER JACKET FABRIC:100% NYLON

MEN: WOMEN:  
SIZE: S-3XL SIZE: S-2XL



000  
Black

2004  
Sky Gray

2005  
Gray Pink

- EXCELLENT SHAPE MEMORY FABRIC ENSURE EXCELLENT WRINKLE RESISTANCE, MAKING THE JACKET STRUCTURED, WINDPROOF, WATERPROOF AND BREATHABLE, AN ESSENTIAL AND RELAXED-FIT OUTDOOR & TRAVELLING INSULATED JACKET.
- THE INNER FABRIC USE ANTI-STATIC INSULATED LINING, TO AVOID STATIC IN THE NORTHERN COLD ENVIROMENT, AND KEEP WARM AT THE SAME TIME.
- DETACHABLE DOWN INNER, PROVIDE EXTRA WARMTH AND ACTS AS A SAFEGUARD.
- THE HEAT GLUED SEAM ENHANCES THE FIRMNESS, WATERPROOF AND DURABILITY.
- SIDE VENT WITH ZIPPER TO MEET DIFFERENT TYPE OF PEOPLE.
- MINIMALIST DESIGN,3D CUTTING, EXQUISITE WORKMANSHIP, EASY MATCHING.

★ ■8363YR1024 ■8363YR2024

DOWN JACKET FABRIC:100% POLYESTER

MEN: WOMEN:  
SIZE: S-4XL SIZE: S-3XL



2009  
Khaki Gray

401  
Navy Blue

2005  
Gray Pink

- DOUBLE-LAYER COMPOUND HIGH-QUALITY POLYMER BREATHABLE MEMBRANE INTERNATIONAL STANDARD: 5K/5K;US STANDARD OF 15000.
- OPTIMIZED WATERPROOF AND BREATHABLE STRUCTURE, EASILY COPING WITH LIGHT TO MODERATE RAIN DURING TRAVELS.
- 3D CUTTING PATTERN
- BUILT-IN HONEYCOMB STRUCTURE WITH ANTI-STATIC AND WARM FLEECE LINING, AS WELL AS HIGH LOFT DUCK DOWN.
- VERSATILE FOR COMMUTING.

★ ■8263YR1012

SHORT DOWN JACKET FABRIC:100% POLYESTER

ADULTS:  
SIZE: S-3XL



102  
Off White

214  
Khaki

4053  
Cobalt Blue

401  
Navy Blue

- EXCELLENT SHAPE MEMORY FABRIC ENSURE EXCELLENT WRINKLE RESISTANCE, MAKING THE JACKET STRUCTURED, WINDPROOF, WATERPROOF AND BREATHABLE, AN ESSENTIAL AND RELAXED-FIT OUTDOOR & TRAVELLING INSULATED JACKET.
- THE INNER FABRIC USE ANTI-STATIC INSULATED LINING, TO AVOID STATIC IN THE NORTHERN COLD ENVIROMENT,AND KEEP WARM AT THE SAME TIME.
- HEAT-SEALED WINDPROOF COLLAR WITH INNER TRICOT FABRIC, TO EFFECTIVELY PROTECT YOUR NECK IN THE COLD WEATHER.
- INNER DOWN COMBINED WITH OUTER FABRIC FEATURES,CLO>2, TO KEEP YOU WARM AND COMFORTABLE DURING THE COLD WINTER.
- THE HEAT GLUED SEAM ENHANCES THE FIRMNESS, WATERPROOF AND DURABILITY.
- MINIMALIST DESIGN,3D CUTTING, EXQUISITE WORKMANSHIP, EASY MATCHING.

★ ■ 8163YR1002

DOWN JACKET FABRIC:100% POLYESTER



ADULTS:  
SIZE: S-5XL



000  
Black

DETAILS:

HIGH-NECK SNOOD WINDPROOF, COMFORTABLE & SNUG FIT KEEPS YOU WARM IN THE COLD DAYS.  
HIGH QUALITY BRANDED WINDPROOF ZIPPER.  
RIBS INSIDE CUFFS KEEP WIND AND SNOW AWAY.  
SPORTY LIFESTYLE JACKET, A NECESSITY IN WINTER.

★ ■ 8163YR1003

DOWN JACKET FABRIC:100% POLYESTER



ADULTS:  
SIZE: S-5XL



000  
Black

401  
Navy Blue

202  
Light Gray

DETAILS:

DETACHABLE WINDPROOF HOOD CAN BE ADJUSTED TO EFFECTIVELY BLOCK COLD AIR.  
LASER-CUT HOLES ON ARMPITS, BREATHABLE AND SWEAT WICKING.  
SUPERIOR FABRIC FILLED WITH THERMAL DOWN KEEPS YOU WARM DURING COLD DAYS.  
SPORTY LIFESTYLE JACKET, A NECESSITY IN WINTER.

★ ■ 8163YR1001

DOWN JACKET FABRIC:100% POLYESTER



ADULTS:  
SIZE: S-5XL



000  
Black

200  
Gray

DETAILS:

1. DOUBLE-LAYER COMPOUND HIGH-QUALITY POLYMER MEMBRANE, WATER REPELLENT & ANTI-STATIC.
2. ANTI-STATIC AND THERMAL INSULATION LINING.
3. PREMIUM MAGNETIC SNAP BUTTONS AT THE COLLAR WITH A UNIQUE CLEAN BUCKLE DESIGN.
4. BUILT-IN DOWN FILLING COMBINED WITH THE OUTER FABRIC, WITH A CLO RATING ABOVE 2, EASILY WITHSTANDING EXTREME COLD WEATHER.
5. SEAMLESS BONDING ENHANCING DURABILITY, WATERPROOFNESS, AND WEAR RESISTANCE.

★ ■ 8263YR1009

MID LENGTH DOWN JACKET FABRIC:100% POLYESTER

ADULTS:  
SIZE: S-3XL



000  
Black

Bock

DETAILS:

- CRAFTED WITH 3-LAYER LIGHT WEIGHT COMPOSITE TRICOT FABRIC, MAKING THE JACKET STRUCTURED, WINDPROOF, WATERPROOF AND BREATHABLE, AN ESSENTIAL AND RELAXED-FIT OUTDOOR & TRAVELLING INSULATED JACKET.
- THE INNER FABRIC USE ANTI-STATIC INSULATED LINING, TO AVOID STATIC IN THE NORTHERN COLD ENVIROMENT, AND KEEP WARM AT THE SAME TIME.
- DETACHABLE DOWN INNER, PROVIDE EXTRA WARMTH AND ACTS AS A SAFEGUARD.
- THE HEAT GLUED SEAM ENHANCES THE FIRMNESS, WATERPROOF AND DURABILITY.
- MINIMALIST DESIGN, 3D CUTTING, EXQUISITE WORKMANSHIP, EASY MATCHING.
- INVISIBLE MAGNETIC STRIPS FOR MORE STABLE AND ANTIOXIDATIVE



ACCESORIES

179-224

■ 8101BB5016

BACKPACK  
FABRIC: 100% POLYESTER  
SIZE: 53\*52\*20CM



000  
Black

Back



Velcro flap can be removed



Side zippered pockets to carry umbrella, bottle etc.



Bottom zippered compartment for storing balls, shoes etc.

■ 8301BB5043

BACKPACK  
FABRIC: 100% POLYESTER  
SIZE: 47\*29.5\*15CM



000  
Black

200  
Gray



Triangle loop to hang bottle, flying disc etc.



■ 8301BB5038

BACKPACK  
FABRIC: 100% POLYESTER  
SIZE: 44\*28\*16CM



000  
Black

416  
Dark Blue

609  
Wine Red



Multiple compartments keep your gear close, secure and organized



Side zippered pockets to carry umbrella, bottle etc.

■ 8301BB5044

BACKPACK  
FABRIC: 100% POLYESTER  
SIZE: 49\*35\*15CM



000  
Black

Back



Triangle loop to hang bottle, flying disc etc.



Main compartment with laptop sleeve



Adjustable straps at both sides make your bag tight & smart

■ 8201BB5005

BACKPACK  
FABRIC: 100% POLYESTER  
SIZE: 44.5\*30.5\*16.5CM



000  
Black

Back



Front zippered pocket



Bottom zippered compartment for storing shoes



Side pockets with elastic tape to grip your bottle, umbrella

■ 8201BB5003

BACKPACK  
FABRIC: 100% POLYESTER  
SIZE: 52\*32\*22CM



000  
Black

Back



Side pockets with elastic tape to grip your bottle, umbrella, etc.



Bottom zippered compartment for storing balls, shoes etc.

■ 8301BB5051

BACKPACK  
FABRIC: 100% POLYESTER  
SIZE: 47\*31\*13CM



600  
Red

432  
Blue

Back

000  
Black

■ 8301BB5037

BACKPACK  
FABRIC: 100% POLYESTER  
SIZE: 30\*16.5\*46.5CM



000 Black      416 Dark Blue      609 Wine Red

■ 8301BB5049

BACKPACK  
FABRIC: 100% POLYESTER  
SIZE: 56\*32\*23CM



000 Black      416 Dark Blue      Back

■ 8301BB5041

DUFFEL BAG  
FABRIC: 100% POLYESTER  
SIZE: 57\*30\*28CM



000 Black      Back



Water-repellent  
dirt-resistant



Multiple pockets to keep  
your things organized



Side Pockets with elastic tape  
to grip your bottle, umbrella etc.

■ 8201BB5004

BACKPACK  
FABRIC: POLYESTER/PU  
SIZE: 45\*31\*15CM



000 Black      Back



Durable fabric+PU



Top with small  
zippered side pocket



Back embossed EVA foam



Front zippered  
compartment  
with double sliders



Side pockets with  
elastic tape to  
grip your bottle,  
umbrella, etc.

■ 8301BB5042

DUFFEL BAG  
FABRIC: 100% POLYESTER  
SIZE: 57\*30.5\*27.5CM



405  
Light Blue



Padded strap  
comfortable for carrying



Water-repellent  
dirt-resistant



Fashionable  
contrast design



Space for everything to  
keep your things organized

■ 8301BB5050

DUFFEL BAG  
FABRIC: 100% POLYESTER  
SIZE: 49\*43\*32CM



000  
Black

■ 8301BB5052

DUFFEL BAG  
FABRIC 1: 100% POLYESTER  
FABRIC 2: 100% SYNTHETIC PU(BOTTOM)  
SIZE: 49\*43\*32CM



000  
Black



SYNTHETIC PU(BOTTOM)



LASER PUNCHING FOR  
MORE BREATHABLE



200  
Gray

000  
Black



■ 8101BB5011

BACKPACK FABRIC:100% POLYESTER

ADULTS:

SIZE: 57\*34\*17.5CM



000  
Black

Back

■ 9586017

BACKPACK FABRIC:POLYESTER

ADULTS:

SIZE: 55\*19.5\*45CM



600  
Red

Back

000  
Black

■ 8101BB5006

BACKPACK FABRIC:100% POLYESTER

ADULTS:

SIZE: 32\*13\*50CM



000  
Black

Back

■ 8101BB5003

BACKPACK FABRIC:100% POLYESTER

ADULTS:

SIZE: 47\*32\*14CM



000  
Black

600  
Red

432  
Blue

■ 9891020

■ 9893020

BACKPACK FABRIC:100% POLYESTER

ADULTS:

SIZE: 35\*19\*52CM

KIDS:

SIZE: 32\*17\*45.6CM



439  
Royal Blue/Neon Orange

Back



609  
Wine Red

003  
Black/White

CBCK

■ 8201BB5006

BACKPACK FABRIC:100% POLYESTER

ADULTS:

SIZE: 43.5\*31\*14CM



000  
Black

Back

■ 9876004

BACKPACK FABRIC:100% POLYESTER

ADULTS:

SIZE: 29\*16\*48CM



010  
Black/Neon Green

Back

055  
Black/Silver

■ 9876003

BACKPACK FABRIC:100% POLYESTER

ADULTS:

SIZE: 30\*17\*47CM



009  
Black/Neon Orange

001  
Black/Red

002  
Black/Royal Blue

CBCK

CBCK

■ 8101BB5009

BACKPACK FABRIC:100% POLYESTER

ADULTS:

SIZE: 28\*28\*55CM



000  
Black

■ 9876005

DUFFEL BAG FABRIC:100% POLYESTER  
ADULTS:  
SIZE: 56\*32\*26CM



010  
Black/Neon Green

Back

661  
Red/Silver



■ 9876007

DUFFEL BAG FABRIC:100% POLYESTER  
ADULTS:  
SIZE: 55\*26\*30CM



010  
Black/Neon Green

Back

■ 8101BB5017

TRAVELBAG FABRIC:100% POLYESTER  
ADULTS:  
SIZE: 51\*26\*19CM



000  
Black



■ 8101BB5001(BIG)  
■ 8101BB5002(SMALL)

DUFFEL BAG FABRIC:100% POLYESTER  
ADULTS:  
SIZE(BIG): 58\*29\*29CM  
SIZE(SMALL): 48\*27\*27CM



000  
Black

■ 8101BB5010

MEDIBAG FABRIC:100% POLYESTER  
ADULTS:  
SIZE: 45\*24\*21CM



000  
Black



■ 8201BB5007

SLING BAG FABRIC:POLYESTER  
ADULTS:  
SIZE: 22\*5\*29CM



000  
Black

Back

■ 8101BB5007

SHOE BAG FABRIC:100% POLYESTER  
ADULTS:  
SIZE: 35\*14\*19CM



021  
Black/Dark Gray

■ 8201BB5001

SHOE BAG FABRIC:100% POLYESTER  
ADULTS:  
SIZE: 34\*18\*12CM



000  
Black

600  
Red

906  
Neon Blue

904  
Neon Green

■ 9886018

SHOE BAG FABRIC:100% POLYESTER  
ADULTS:  
SIZE: 42\*16.5\*13CM



055  
Black/Silver

012  
Black/Neon Yellow

009  
Black/Neon Orange



■ 8201BB5002

WAIST BAG FABRIC:100%POLYESTER  
ADULTS:  
SIZE: 40\*15\*10CM



100  
White

000  
Black

401  
Navy Blue

■ 8101BB5008

WAIST BAG FABRIC:100% POLYESTER  
ADULTS:  
SIZE: 37\*6\*14.5CM



000  
Black

■ 8401BB5055

SLING BAG FABRIC:100% POLYESTER  
SIZE:39\*24.5\*18.5CM



000  
Black

■ 8301BB5039

SLING BAG FABRIC:100% POLYESTER  
ADULTS:  
SIZE: 27\*15.5\*4.5CM



000 Black 401 Navy Blue

■ 8301BB5040

ARM BAG FABRIC:100% POLYESTER  
ADULTS:  
SIZE: 17.5\*8.5\*1.6CM



416 Dark Blue 481 Royal sky blue

■ 8301BB5035

DRAWSTRING BAG FABRIC:100% POLYESTER  
ADULTS:  
SIZE: 47\*35\*15CM



000 Black 401 Navy Blue 600 Red 021 Black/Dark Gray Bcak

■ 8201BB5029

DRAWSTRING BAG FABRIC:100% POLYESTER  
ADULTS:  
SIZE: 42\*47CM

■ K15S959 ■ K15S959A

TROLLEY BAG FABRIC:100% POLYESTER  
K15S959 :  
SIZE: 82.5\*43.5\*30CM



K15S959A :  
SIZE: 65\*36\*19CM



000 Black Bcak

■ K15F907

TROLLEY BAG FABRIC:POLYESTER  
ADULTS:  
SIZE: 60\*27\*30CM



TELESCOPIC HANDLE



ROLLER WHEELS

000 Black

■ K034-1

DRAWSTRING BAG FABRIC:100% POLYESTER  
ADULTS:  
SIZE: 35\*45CM



907 Neon Orange 644 Bright Red 000 Black 481 Royal Sky Blue 904 Neon Green 903 Neon Red

■ 9886019

BALL BAG FABRIC:100% POLYESTER  
ADULTS:  
SIZE: 50\*50\*90CM (HOLDS 14 SOCCER BALLS SIZE#5)



000 Black Bcak

CBCK

■ 8101BB5012

TROLLEY CASE MATERIAL:PC  
ADULTS:  
SIZE: 40\*22\*56CM (20")



416 Dark Blue 900 Silver

■ 8101BB5018

DRAWSTRING BAG FABRIC:100% POLYESTER  
ADULTS:  
SIZE: 42\*47CM



015 Black/Gray 004 Black/Green 007 Black/Orange 070 Black/Blue

■ 8101BB5019

DRAWSTRING BAG FABRIC:100% POLYESTER  
ADULTS:  
SIZE: 34\*43CM



015 Black/Gray 004 Black/Green 007 Black/Orange 070 Black/Blue



2023年亚足联卡塔尔亚洲杯官方全球赞助商  
AFC ASIAN CUP QATAR 2023™ OFFICIAL GLOBAL SUPPORTER

**VORTEX AC23+**

OFFICIAL FINAL MATCH BALL

2023年亚足联卡塔尔亚洲杯 官方决赛用球

■ AFC23QU5000MF

23 AFC ASIAN CUP OFFICIAL MATCH BALL (FINAL)  
(LAMINATED)

SHELL: PU  
SIZE: 5#  
WEIGHT: 420-445G  
BLADDER: BUTYL  
PRESSURE: 0.6-0.8 BAR  
PANEL QTY: 32 PANELS  
CIRCUMFERENCE: 685-695MM  
QTY: 12 PCS/CTN



8301WL5085

901 Golden

■ AFC23QU5000

23 AFC ASIAN CUP OFFICIAL MATCH BALL  
(LAMINATED)

SHELL: PU  
CIRCUMFERENCE: 685-695MM  
WEIGHT: 420-445G  
BLADDER: BUTYL  
PRESSURE: 0.6-0.8 BAR  
PANEL QTY: 32 PANELS  
QTY: 12 PCS/CTN



8301WL5059



107 White/Red

■ 8301QU5083

FOOTBALL (LAMINATED)

SHELL: PU  
SIZE: 4#,5#  
WEIGHT: 4#:350-390G  
5#:410-450G  
BLADDER: BUTYL

PRESSURE: 0.6-0.8 BAR  
PANEL QTY: 32 PANELS  
CIRCUMFERENCE: 4#:635-660MM  
5#:680-695MM  
QTY: 12 PCS/CTN



107 White/Red



113 White/Neon Blue



118 White/Purple

■ 8301QU5086

FOOTBALL (MACHINE STITCHING)

SHELL: TPU  
SIZE: 1#  
WEIGHT: 105-120G  
BLADDER: RUBBER

PRESSURE: 0.6-0.8 BAR  
PANEL QTY: 32 PANELS  
CIRCUMFERENCE: 400-415MM  
QTY: 100 PCS/CTN



107 White/Red

■ 8301QU5085

FOOTBALL (LAMINATED)

SHELL: PU  
SIZE: 4#,5#  
WEIGHT: 4#:350-390G  
5#:400-450G  
BLADDER: RUBBER

PRESSURE: 0.6-0.8 BAR  
PANEL QTY: 32 PANELS  
CIRCUMFERENCE: 4#:620-660MM  
5#:675-710MM  
QTY: 12 PCS/CTN



107 White/Red



157 White/Maroon



105 White/Green

HIGH QUALITY PU SHELL WITH GRAINS IN FUSIFORM TEXTURE, WHICH HELPS TO INCREASE ABRASION PERFORMANCE AND ANTI-WATER ABSORPTION.

HIGH DENSITY AND HIGH REBOUNDED FOAM, MAKES THE BALL WITH VERY GOOD BALANCE AND STABILITY WHEN FLYING.

NEW-GENERATION ULTRA SEAM THERMAL BONDING TECHNIC, GIVES THE BALL PERFECT SPHERICITY.

GOOD QUALITY BUTYL BLADDER, IMPROVES THE REBOUND AND ANTI-STRIKE ABILITY.

VORTEX AC23  
OFFICIAL MATCH BALL

AFC ASIAN CUP QATAR 2023™  
OFFICIAL MATCH BALL

■ 8301QU5020  
FOOTBALL (LAMINATED)

SHELL: PU  
SIZE: 5#  
CIRCUMFERENCE: 685-695MM  
WEIGHT: 420-445G  
BLADDER: BUTYL  
PRESSURE: 0.6-0.8 BAR  
PANEL QTY: 32 PANELS  
QTY: 12PCS/CTN



113  
White/Neon Blue



107  
White/Red

■ 8301QU5021  
FOOTBALL (LAMINATED)

SHELL: PU  
SIZE: 5#  
CIRCUMFERENCE: 680-700MM  
WEIGHT: 410-450G  
BLADDER: RB  
PRESSURE: 0.6-0.8 BAR  
PANEL QTY: 32 PANELS  
QTY: 12PCS/CTN



113  
White/Neon Blue



107  
White/Red

■ 8301QU5080

FOOTBALL (HYBRID)

SHELL: TPU  
SIZE: 4#, 5#  
WEIGHT: 4#: 350-390G  
5#: 420-445G  
BLADDER: BUTYL  
PRESSURE: 0.6-0.8 BAR  
PANEL QTY: 10 PANELS  
CIRCUMFERENCE: 4#: 635-660MM  
5#: 685-695MM  
QTY: 4#: 14 PCS/CTN  
5#: 12 PCS/CTN



(4#)



(5#)



113  
White/Neon Blue



107  
White/Red

■ 8301QU5075

FOOTBALL (LAMINATED)

SHELL: PU  
SIZE: 4#, 5#  
CIRCUMFERENCE: 4#: 615-650MM 5#: 675-710MM  
WEIGHT: 4#: 360-380G 5#: 420-450G  
BLADDER: BUTYL  
PRESSURE: 0.6-0.8 BAR  
PANEL QTY: 32 PANELS  
QTY: 18 PCS/CTN



104  
White/Royal Blue



107  
White/Red

■ 8301QU5074

FUTSALBALL (LAMINATED)

SHELL: PU  
SIZE: 4#  
CIRCUMFERENCE: 615-650MM  
WEIGHT: 390-420G  
BLADDER: BUTYL  
PRESSURE: 0.4-0.6 BAR  
PANEL QTY: 32 PANELS  
QTY: 18 PCS/CTN



113  
White/Neon Blue



423  
Dark Blue/Red

■ 8401QU5091

FUTSAL BALL (MACHINE STITCHING)

SHELL: TPU  
 SIZE: 3#, 4#, 5#  
 WEIGHT: 3#: 300-320G  
 4#: 350-390G  
 5#: 410-450G

PRESSURE: 3# 0.4-0.6BAR  
 4# 5# 0.6-0.8BAR  
 PANEL QTY: 32PANELS  
 CIRCUMFERENCE: 3#: 35-560MM  
 4#: 615-650MM  
 5#: 675-710MM

QTY: 3#: 50PCS/CTN  
 4#: 40PCS/CTN  
 5#: 36PCS/CTN



103  
White/Black

■ 8401QU5092

FUTSAL BALL (MACHINE STITCHING)

SHELL: TPU  
 SIZE: 3#, 4#, 5#  
 WEIGHT: 3#: 300-320G  
 4#: 350-390G  
 5#: 410-450G

PRESSURE: 3# 0.4-0.6BAR  
 4# 5# 0.6-0.8BAR  
 PANEL QTY: 32PANELS  
 CIRCUMFERENCE: 3#: 535-560MM  
 4#: 615-650MM  
 5#: 675-710MM

QTY: 3#: 50PCS/CTN  
 4#: 40PCS/CTN  
 5#: 36PCS/CTN



103  
White/Black

■ 9086842

VORTEX F 18.2 INDOOR FUTSAL BALL (MACHINE STITCHING)

SHELL: TPU  
 SIZE: 4#  
 CIRCUMFERENCE: 620-640MM  
 WEIGHT: 400-440G  
 BLADDER: BUTYL

PRESSURE: 0.4-0.6BAR  
 PANEL QTY: 32PANELS  
 QTY: 36PCS/CTN



129  
White/Neon Orange



■ 8001QU5001

VORTEX F 18+ INDOOR FUTSAL BALL (HAND STITCHING)

SHELL: PU  
 SIZE: 4#  
 CIRCUMFERENCE: 620-640MM  
 WEIGHT: 400-440G  
 BLADDER: BUTYL

PRESSURE: 0.4-0.6BAR  
 PANEL QTY: 32PANELS  
 QTY: 25PCS/CTN



129  
White/Neon Orange



■ 9886120

VORTEX 18.2 FOOTBALL (MACHINE STITCHING)

SHELL: TPU  
 SIZE: 4# 5#  
 WEIGHT: 4#: 315-405G  
 5#: 382-468G

PRESSURE: 0.6-0.8BAR  
 PANEL QTY: 10PANELS  
 BLADDER: THREAD WINDING SR

CIRCUMFERENCE:  
 4#: 615-650MM  
 5#: 675-710MM



423  
Dark Blue/Red



127  
White/Neon Green



115  
White/Neon Blue



■ 8001QU5002

VORTEX 18.1 FOOTBALL (HAND STITCHING)

SHELL: PU  
 SIZE: 5#  
 CIRCUMFERENCE: 680-700MM

PRESSURE: 0.6-0.8BAR  
 PANEL QTY: 32PANELS  
 WEIGHT: 410-450G



423  
Dark Blue/Red

■ 8101QU5001

VORTEX 18.2 FOOTBALL (LAMINATED)

SHELL: PU  
 SIZE: 4# 5#  
 CIRCUMFERENCE: 4#: 615-650MM  
 5#: 675-710MM  
 WEIGHT: 4#: 315-405G  
 5#: 382-468G

PRESSURE: 0.6-0.8BAR  
 PANEL QTY: 32PANELS



423  
Dark Blue/Red



127  
White/Neon Green



115  
White/Neon Blue



905  
Neon Yellow

■ 8101QU5003

VORTEX 21.1 FOOTBALL (HAND STITCHING)

SHELL: PU  
 SIZE: 4# 5#  
 CIRCUMFERENCE: 4#: 615-650MM  
 5#: 675-710MM  
 WEIGHT: 4#: 315-405G  
 5#: 382-468G

BLADDER: BUTYL  
 PRESSURE: 0.6-0.8BAR  
 PANEL QTY: 10PANELS  
 QTY: 24/28PCS



423  
Dark Blue/Red



127  
White/Neon Green



115  
White/Neon Blue



905  
Neon Yellow



■ 9886130

VORTEX 18.2 FOOTBALL (MACHINE STITCHING)

SHELL: TPU  
 SIZE: 3# 4# 5#  
 WEIGHT: 3#: 300-320G  
 4#: 315-405G  
 5#: 382-468G

CIRCUMFERENCE: 3#: 535-560MM  
 4#: 615-650MM  
 5#: 675-710MM



905  
Neon Yellow



107  
White/Red



423  
Dark Blue/Red



127  
White/Neon Green



115  
White/Neon Blue



■8403WL5078

PADEL RACKET(TRAINING)  
MATERIAL: TOTAL CARBON+EVA  
SIZE: FREE SIZE



070  
Black/Blue

■8403WL5079

PADEL RACKET(MATCH)  
MATERIAL: 3K+EVA  
SIZE: FREE SIZE



904  
Neon Green

■8403WL5080

PADEL RACKET(PROFESSIONAL)  
MATERIAL: 12K+EVA  
SIZE: FREE SIZE



055  
Black/Silver

■8102QU5006

BASKETBALL  
MATERIAL: PU  
SIZE: 5#



169  
White/Blue/Red

■8202QU5001

BASKETBALL  
MATERIAL: MICROFIBER PU/BUTYL  
SIZE: 7#



250  
Light Brown

■9806140

VOLLEYBALL  
MATERIAL: MICROFIBER PU  
SIZE: 5# 4-6PSI  
PRESSURE: 0.6-0.8BAR  
CIRCUMFERENCE: 650-670MM  
WEIGHT: 260-280G



141  
White/Dark Blue/Yellow

■8201WL5040

FLY DISC  
MATERIAL: PE  
SIZE: FREE SIZE(DIAMETER 273MM)



100  
White



162  
White/Blue

■8102QU5004

BASKETBALL  
MATERIAL: MOISTURE-ABSORBENT PU  
SIZE: 6#



133  
White/Orange

■8102QU5001

BASKETBALL  
MATERIAL: ABSORBENT PU/BUTYL  
SIZE: 7#



217  
Brown

■8203QU5017

VOLLEYBALL  
MATERIAL: PVC  
SIZE: 5#  
CIRCUMFERENCE: 650-670MM  
WEIGHT: 260-300G  
PRESSURE: 4-6PSI  
QTY: 40PCS/CTN



143  
White/Royal Blue/Yellow



162  
White/Blue



613  
Red/Yellow

■8102QU5002

BASKETBALL  
MATERIAL: RUBBER  
SIZE: 5#



169  
White/Blue/Red

■8102QU5005

BASKETBALL  
MATERIAL: MICROFIBER PU/BUTYL  
SIZE: 7#



250  
Light Brown



■ 8101ST5003

GOALKEEPER GLOVES (MATCH)  
(FINGERSAVE)

ADULTS:  
SIZE: 5 6 7 8 9 10 11 12



010  
Black/Neon Green



■ 8101ST5002

GOALKEEPER GLOVES (PROFESSIONAL)

ADULTS:  
SIZE: 8 9 10 11 12



107  
White/Red



■ 9896410

FUTSAL GOALKEEPER GLOVES (PROFESSIONAL) MATERIAL:LATEX/POLYESTER

ADULTS:  
SIZE: 8 9 10 11



012  
Black/Neon Yellow

009  
Black/Neon Orange

■ 9896408

GOALKEEPER GLOVES (MATCH)  
MATERIAL:LATEX

ADULTS:  
SIZE: 5 6 7 8 9 10 11



012  
Black/Neon Yellow

009  
Black/Neon Orange

■ 9896409

GOALKEEPER GLOVES (TRAINING)  
MATERIAL:LATEX/PU

ADULTS:  
SIZE: 5 6 7 8 9 10 11



012  
Black/Neon Yellow

009  
Black/Neon Orange

■ 9881406

THERMAL GLOVES FABRIC:ACRYLIC

ADULTS: M, L KIDS:  
SIZE: FREE SIZE



009  
Black/Neon Orange

015  
Black/Gray

010  
Black/Neon Green



■ 8101ST5004

GOALKEEPER GLOVES (TRAINING)

ADULTS:  
SIZE: 5 6 7 8 9 10 11 12



045  
Black/Neon Red



■ 8101ST5005

GOALKEEPER GLOVES  
(FINGERSAVE/FOR ARTIFICIAL GRASS COURT)

ADULTS:  
SIZE: 5 6 7 8 9 10 11 12



000  
Black



■ 9886404

THERMAL GLOVES FABRIC:85% POLYESTER,15% SPANDEX

ADULTS:  
SIZE: M, L



010  
Black/Neon Green

009  
Black/Neon Orange

015  
Black/Gray

■ 8161ST5001

THERMAL GLOVES FABRIC:87% POLYESTER,13% SPANDEX  
ADULTS:  
SIZE: FREE SIZE



010  
Black/Neon Green

009  
Black/Neon Orange

015  
Black/Gray

■ 9886405

THERMAL GLOVES FABRIC:100% POLYESTER  
ADULTS:  
SIZE: M, L



010  
Black/Neon Green

009  
Black/Neon Orange

015  
Black/Gray

■ 8161ST5003

THERMAL GLOVES FABRIC: 87% POLYESTER  
ADULTS: 13% SPANDEX  
SIZE: M, L



010  
Black/Neon Green

008  
Black/Rose

020  
Black/Neon Blue

■ 8161ST5002 ■ 8161ST5004

THERMAL GLOVES FABRIC: 87% POLYESTER  
ADULTS: KIDS: 13% SPANDEX  
SIZE: FREE SIZE SIZE: FREE SIZE



015  
Black/Gray

009  
Black/Neon Orange

010  
Black/Neon Green

■ 8161WJ5004

NECK GAITER FABRIC:100% POLYESTER  
ADULTS:  
SIZE: 51\*31CM



015  
Black/Gray

004  
Black/Green

070  
Black/Blue

■ 8161WJ5002

NECK GAITER FABRIC:86% POLYESTER 14%SPANDEX  
ADULTS:  
SIZE: 28\*29CM



070  
Black/Blue

008  
Black/Rose Red

010  
Black/Neon Green

■ 8161WJ5003

NECK GAITER FABRIC:100% POLYESTER  
ADULTS:  
SIZE: 30\*32CM



015  
Black/Gray

008  
Black/Rose

010  
Black/Neon Green

070  
Black/Blue

■ 9881208 ■ 9883208

NECK GAITER FABRIC:100% POLYESTER  
ADULTS: KIDS:  
SIZE: FREE SIZE SIZE: FREE SIZE



000  
Back

Side

■ 8161WJ5001

NECK GAITER FABRIC:85% POLYESTER,15% SPANDEX  
ADULTS:  
SIZE: FREE SIZE



000  
Back

Side

■K15Z910A ■K15Z910C

NECK GAITER (REVERSIBLE) FABRIC:100% POLYESTER

ADULTS: SIZE: 27\*26CM  
KIDS: SIZE: 23\*22CM



932 Neon Orange/Black  
933 Neon Green/Black  
412 Royal Blue/Black  
611 Red/Black

■8261WJ5005

DOWN SCARF FABRIC:NYLON/POLYESTER

ADULTS: SIZE: 90\*15CM



000 Black  
102 Off White

■8201MZ5011

KNITTED HAT FABRIC:100% ACRYLIC

ADULTS: SIZE: FREE SIZE



000 Black  
102 Off White  
200 Gray  
401 Navy Blue

■9886506

KNITTED HAT FABRIC:100% ACRYLIC

ADULTS: SIZE: FREE SIZE



000 Black

■8201MZ5012

KNITTED HAT FABRIC:NYLON/ACRYLIC/COTTON

ADULTS: SIZE: FREE SIZE



000 Black  
200 Gray  
401 Navy Blue

■8301MZ5024

CAP SHELL FABRIC:UPPER:91% POLYESTER,9% SPANDEX,BOTTOM:100% POLYESTER  
LINING FABRIC:UPPER:91% POLYESTER,9% SPANDEX

ADULTS: SIZE: FREE SIZE (ADULTS ONLY)



000 Black  
100 White  
416 Dark Blue

■8301MZ5019

CAP SHELL FABRIC:100% POLYESTER LINING:100% POLYESTER

ADULTS: SIZE: FREE SIZE (ADULTS ONLY)



000 Black  
100 White  
214 Khaki  
454 Azury

■8101MZ5001

CAP SHELL FABRIC: POLYESTER/SPANDEX LINING: POLYESTER/COTTON  
ADULTS:  
SIZE: FREE SIZE(ADJUSTABLE)



000  
Black

100  
White

481  
Royal Sky Blue

600  
Red

■8101MZ5007

CAP SHELL FABRIC: POLYESTER/SPANDEX LINING: POLYESTER/COTTON  
ADULTS:  
SIZE: FREE SIZE(ADJUSTABLE)



003  
Black/White

610  
Red/White

214  
Khaki

409  
Royal Blue/White

CBCK

CBCK



103  
White/Black



424  
Dark Blue/White

CBCK



675  
Pink/White

■K044

SPORTS TOWEL FABRIC: POLYESTER(COOL DRY)  
SIZE: 110\*30CM



405  
Light Blue

904  
Neon Green

202  
Light Gray

602  
Rose

808  
Orange

■9886316 ■9886316A

SPORTS TOWEL FABRIC: 100% COTTON  
9886316: 9886316A:  
SIZE: 78\*39CM SIZE: 140\*70CM



300  
Green

■9886711

SUN-PROTECTIVE SLEEVES  
FABRIC: 82% NYLON/18% SPANDEX  
SIZE: S, M, L



000  
Black

400  
Royal Blue

100  
White

■8101WL5002

TRITAN SPORTS BOTTLE  
SIZE: 500ML



305  
Light Turquoise

405  
Light Blue

218  
Gray Brown

202  
Light Gray

■8101WL5001

THERMOS MATERIAL: AUSTENITIC STAINLESS STEEL  
06CR19NI10(FOOD-CONTACT MATERIAL)  
SIZE: 600ML



003  
Black/White

611  
Red/Black

■8401WL5074

TRITAN SPORTS BOTTLE  
CUP: PC LID: PP+FOOD GRADE SILICONE  
SIZE: 2.5L



800  
Black

300  
Green

■ 8101XB5001

CAPTAIN ARMBAND FABRIC:ELASTIC TAPE

SIZE: FREE SIZE



905 Neon Yellow  
CBCK

400 Royal Blue  
CBCK



907 Neon Orange

600 Red  
CBCK

■ 9886701

SUPPORT TAPE MATERIAL:100% COTTON

SIZE: FREE SIZE



Item#:9086838  
SCISSORS(FOR FREE IF YOU NEED)

600 Red

417 Sapphire Blue

405 Light Blue

1000 Skin

000 Black

■ 9886715

SUPPORT TAPE MATERIAL:100% COTTON

SIZE: 3.8CM\*9.1M



1000 Skin

100 White

■ 9886716

SUPPORT TAPE(WITHOUT GLUE) MATERIAL:PU

SIZE: 7CM\*27M



1000 Skin

■ 9886702

CAPTAIN ARMBAND FABRIC:ELASTIC TAPE

SIZE:31\*6.5CM



904 Neon Green

400 Royal Blue

644 Bright Red

907 Neon Orange

■ 9886717

HEAD BAND FABRIC: 70%COTTON 10%POLYESTER 20%SPANDEX

ADULTS:  
SIZE: FREE SIZE



400 Royal Blue

000 Black

600 Red

100 White

■ 9886212

WRIST BAND FABRIC: 70%COTTON 10%POLYESTER 20%SPANDEX

ADULTS:  
SIZE: FREE SIZE



400 Royal Blue

600 Red

100 White

■ 9886213

PATELLAR BELT FABRIC: 80%SYNTHETIC RUBBER 20%STRETCH NYLON

ADULTS:  
SIZE: FREE SIZE



000 Black

■ 8301HJ5005

SHIN GUARD MATERIAL: CARBON FIBER+EVA  
ADULTS:  
SIZE: S, M, L  
(LIGHT,STURDY,ANTI-IMPACT)



000  
Black

■ K15S948

SHIN GUARD MATERIAL: PP+EVA  
ADULTS:  
SIZE: S, M, L.



003  
Black/White

CBCK

225  
Gray/White

353  
Mint Green/Black

CBCK

■ 8201HJ5003

SHIN GUARD MATERIAL:PP+EVA  
ADULTS:  
SIZE: M, L



117  
White/Gray

600  
Red

432  
Blue

■ 8301HJ5011

SHIN GUARD MATERIAL: PP+EVA  
ADULTS:  
SIZE: FREE SIZE (ADULTS ONLY)



715  
Yellow/Green

309  
Blackish Green

■ 8101HJ5001

SHIN GUARD MATERIAL:PP+EVA  
ADULTS:  
SIZE: S, M



000  
Black

300  
Green

602  
Rose

716  
Yellow

200  
Gray

432  
Blue

■ 8301HJ5012

SHIN GUARD MATERIAL: PP+EVA  
ADULTS:  
SIZE: FREE SIZE (ADULTS ONLY)



005  
Black/White

000  
Black

409  
Royal Blue/White

610  
Red

■ 8401WZ5097

■ 8401WZ3097

FULL-LENGTH FOOTBALL SOCKS MATERIAL:COTTON/POLYESTER/SPANDEX/ELASTODIEN FIBRE  
ADULTS:  
SIZE: FREE SIZE

KIDS:  
SIZE: FREE SIZE(32-36)



000  
Black

100  
White

400  
Royal Blue

600  
Red

■ 9876312

FULL-LENGTH FOOTBALL SOCKS  
MATERIAL:NYLON/COTTON/ELASTIC/SPANDEX  
ADULTS:  
SIZE: M(39-41), L(42-44), XL(45-48)



003  
Black  
/White

409  
Royal Blue  
/White

103  
White  
/Black

610  
Red  
/White

933  
Neon Green  
/Black

■ 8201WZ5001

ANTI SLIP(WITH SILICONE) MATERIAL:NYLON/COTTON/ELASTIC/SPANDEX

ADULTS:

SIZE: FREE SIZE



100 White      600 Red      000 Black      481 Royal Sky Blue      904 Neon Green

■ K15Z908

FULL-LENGTH FOOTBALL SOCKS MATERIAL:NYLON/COTTON/ELASTIC/SPANDEX

ADULTS:

SIZE: M(39-41), L(42-44), XL(45-48)



804 Orange/Black      629 Pink/Sea Blue      424 Dark Blue/White      103 White/Black      003 Black/White      318 Grass Green/White



261 Dark Gray/Black      476 Sky Blue/White      508 Purple/White      714 Yellow/Royal Blue      450 Sea Blue/Black      616 Rose/White



409 Royal Blue/White      933 Neon Green/Black      328 Mint Green/Black      610 Red/White      691 Wine Red/White

■ 8101WZ5001 ■ 8101WZ3001

FULL-LENGTH FOOTBALL SOCKS MATERIAL:NYLON/COTTON/ELASTIC/SPANDEX

ADULTS:

SIZE: FREE SIZE (39-44)

KIDS:

SIZE: FREE SIZE(52-56)



409 Royal Blue/White      424 Dark Blue/White      610 Red/White      616 Rose/White      809 Bright Orange/White



945 Neon Pink/Neon Green      003 Black/White      459 Sea Blue/White      508 Purple/White      103 White/Black



318 Grass Green/White      712 Yellow/Black      939 Neon Green/Red

■ 8301WZ5056 ■ 8301WZ3056

FULL-LENGTH FOOTBALL SOCKS MATERIAL:NYLON/POLYESTER/ELASTODIENE/SPANDEX

ADULTS:

SIZE: FREE SIZE

KIDS:

SIZE: FREE SIZE



103 White/Black      409 Royal Blue/White      610 Red/White      003 Black/White

■8401WZ5096

MID CALF SOCKS

FABRIC:81.5% COTTON,16.4% NYLON,2.1% SPANDEX

ADULTS:

SIZE: FREE SIZE



000 Black  
100 White  
200 Gray

■8101WZ5003

MID CALF SOCKS

FABRIC:NYLON/COTTON/ELASTIC/SPANDEX

ADULTS:

SIZE: FREE SIZE



103 White/Black  
003 Black/White  
409 Royal Blue/White

■9876311

FULL-LENGTH FOOTBALL SOCKS

MATERIAL:NYLON/COTTON/ELASTIC/SPANDEX

ADULTS:

SIZE: M(39-41), L(42-44), XL(45-48)



610 Red /White  
804 Orange /Black  
673 Pink /White  
424 Dark Blue /White  
103 White /Black  
003 Black /White  
450 Sea Blue /Black  
616 Rose /White  
409 Royal Blue /White  
518 Grass Green /White  
933 Neon Green /Black  
508 Purple /White  
712 Yellow /Black

■8301WZ5025

ANTI SLIP SOCKS

MATERIAL: 61.2% NYLON,31.2% COTTON, 6.4% ELASTODIENE FIBER,1.2% SPANDEX

ADULTS:

SIZE: FREE SIZE



103 White/Black  
409 Royal Blue /White  
610 Red/White  
933 Neon Green /Black  
003 Black/White  
Back

■K15Z934

MID CALF SOCKS(FOOTBALL/BASKETBALL)

MATERIAL:NYLON/COTTON/ELASTIC/SPANDEX

ADULTS:

SIZE: M(39-41), L(42-44), XL(45-48)



016 Black /Neon Pink  
137 White /Dark Gray  
415 Royal Blue /Neon Green  
CBCK

■8101WZ5002

ANTI SLIP SOCKS(WITH SILICONE)

FABRIC:NYLON/COTTON/SPANDEX/ELASTIC

ADULTS:

SIZE: FREE SIZE



103 White /Black  
409 Royal Blue /White  
003 Black /White  
933 Neon Green /Black  
610 Red/White  
Back

■8301WZ5057

SPORTS SOCKS

MATERIAL:52.8% COTTON,23.6% NYLON,20.4% POLYESTER,3.2% SPANDEX

ADULTS:

SIZE: FREE SIZE



813 Reddish Orange  
619 Rose /Yellow  
424 Dark Blue /White  
476 Sky Blue /White  
Back

■9893319

KIDS LONG FOOTBALL SOCKS

FABRIC:NYLON/COTTON/ELASTIC/SPANDEX

KIDS:

SIZE: FREE SIZE (27-32)



600 Red  
100 White  
400 Royal Blue  
Back

■8102WZ5002

TERRY SPORTS SOCKS

MATERIAL:40% COTTON,34% NYLON,22% POLYESTER,4% SPANDEX

ADULTS:

SIZE: FREE SIZE



000 Black  
100 White  
600 Red  
716 Yellow  
416 Dark Blue  
500 Purple  
300 Green  
481 Royal Blue



■8302WZ5027

MID CALF SOCKS

FABRIC:89.6% POLYESTER,6.9% ELASTODIENE FIBER,  
3.5% SPANDEX

ADULTS:

SIZE: FREE SIZE



000  
Black

100  
White

481  
Royal Sky Blue

■8302WZ5028

MID CALF SOCKS

FABRIC:37.8% COTTON,32.9% NYLON,  
25.9% POLYESTER,3.4% SPANDEX

ADULTS:

SIZE: FREE SIZE



200  
Gray

100  
White

701  
Cream

■8302WZ5029

MID CALF SOCKS

FABRIC: 46.1% COTTON,24.3% NYLON,21.7% POLYESTER,  
6.4% ELASTODIENE FIBER,1.5% SPANDEX

ADULTS:

SIZE: FREE SIZE



005  
Black/White

103  
White/Black

■8302WZ5030

MID CALF SOCKS

FABRIC:37.8% COTTON,32.9% NYLON,  
25.9% POLYESTER,3.4% SPANDEX

ADULTS:

SIZE: FREE SIZE



100  
White

701  
Cream

■8302WZ5031

MID CALF SOCKS

FABRIC: 42.6% NYLON,35% COTTON,16.8% POLYESTER,  
5.6% SPANDEX

ADULTS:

SIZE: FREE SIZE



000  
Black

100  
White

■8302WZ5032

MID CALF SOCKS

FABRIC: 37.8% COTTON,32.9% NYLON,  
25.9% POLYESTER,3.4% SPANDEX

ADULTS:

SIZE: FREE SIZE



000  
Black

100  
White

701  
Cream

■K15Z907

TERRY SPORTS SOCKS

MATERIAL:COTTON/ELASTIC/SPANDEX

ADULTS:

SIZE: M(39-41), L(42-44), XL(45-48)



000  
Black

100  
White

221  
Melange Light Gray

CBCK

■K15Z958

LOW CUT SOCKS

MATERIAL:COTTON/ELASTIC/SPANDEX

ADULTS:

SIZE: M(36-41), L(42-45)



001  
Black/Red

100  
White

221  
Melange Light Gray

CBCK

■9876307

LOW CUT SOCKS

MATERIAL:COTTON/POLYPROPYLENE

ADULTS:

SIZE: M(35-39), L(40-44)



059  
Black/Sea Blue

276  
Dark Gray/Sea Blue

275  
Light Gray/Sea Blue

■8401WZ5095

SPORTS SOCKS

FABRIC: 78.4% COTTON,19.3% NYLON,2.3% SPANDEX

ADULTS:

SIZE:FREE SIZE



000  
Black

100  
White

300  
Green

636  
Pink

■K15Z976

NO-SHOW SOCKS(3 Pairs/Pack)

MATERIAL:COTTON/ELASTIC/SPANDEX

ADULTS:

SIZE: M(36-41), L(42-45)



005  
Black/White

103  
White/Black

241  
Hemp Gray/Black

■9876302

ANKLE SOCKS

MATERIAL:COTTON/ACRYLIC/SPANDEX

ADULTS:

SIZE: M(35-39), L(40-44)



021  
Black/Dark Gray

277  
Dark Gray/Dark green

157  
White/Dark Gray

■K16XLQC004

FOOTBALL TACTICS BOARD  
MATERIAL:PU  
SIZE: 42\*38CM  
CHESS PIECE \*27 GRAINS



CBCK



■K16XLQC024

FOOTBALL TACTICS BOARD (WITH STAND)  
MATERIAL:MAGNETIC BOARD/STAINLESS STEEL  
SIZE: 61.5\*46CM



■K16XLQC028

BOTTLE CARRIER MATERIAL:PP



■K16XLQC023

WATER BASE (5 PCS) MATERIAL:PP



■K16XLQC022

FREE KICK MANNEQUIN(With Pedestal)  
SIZE: 175CM/PIECE



■K16XLQC014

TRAINING HURDLES(ADJUSTABLE)  
15/23/30/40(5PCS)



■K16XLQC013

TRAINING HURDLES (ADJUSTABLE)  
MATERIAL:ABS  
15/30CM 5PCS



CBCK

■K16XLQC018

AGILITY CONE MATERIAL:PP  
SIZE: 23CM/10PCS



■K16XLQC015

AGILITY POLE(WITH BASE)-5PCS/SET  
SIZE FOR POLE: 170CM(H) 3.3CM(DIA)



■K16XLQC021

DRAG PARACHUTE  
MATERIAL:100%POLYESTER



■K16XLQC020

JUGGLE BELT (FOOTBALL EXCLUDED)  
MATERIAL:POLYESTER/SPANDEX



■K16XLQC010 ■K16XLQC010-1

AGILITY RINGS MATERIAL:PP  
K16XLQC010: K16XLQC010-1:  
SIZE: 40CM/12PCS SIZE: 50CM/12PCS



■K16XLQC005

FLAG MATERIAL:POLYESTER/EVA  
SIZE: 45\*34CM/2PCS/SET



CBCK

■K16XLQC003

DISC MARKER MATERIAL: PP  
SIZE: 19CM\*5CM/50PCS



CBCK

■K16XLQC012

MULTI-FUNCTIONAL AGILITY TRAINING LADDER  
SIZE: 6PCS/3M

■K16XLQC012-1

MULTI-FUNCTIONAL AGILITY TRAINING LADDER  
SIZE: 10PCS/5M

■K16XLQC012-2

MULTI-FUNCTIONAL AGILITY TRAINING LADDER  
SIZE: 12PCS/6M



■K16XLQC009

DISC MARKER MATERIAL:PP  
SIZE: 20CM\*6CM/50PCS



CBCK

■K16XLQC017

AGILITY CONE MATERIAL:PP  
SIZE: 23CM/10PCS



CBCK

■K16XLQC011 CBCK

AGILITY TRAINING LADDER  
MATERIAL:POLYESTER+PP  
SIZE: 6PCS/3M

■K16XLQC011-1

AGILITY TRAINING LADDER  
MATERIAL:POLYESTER+PP  
SIZE: 10PCS/5M

■K16XLQC011-2

AGILITY TRAINING LADDER  
MATERIAL:POLYESTER+PP  
SIZE: 12PCS/6M



■K16XLQC017-1

AGILITY CONE MATERIAL:PP  
SIZE: 48CM/10PCS



■K16XLQC016 ■K16XLQC016-1

MARKING POLE MATERIAL:ABS  
K16XLQC016: K16XLQC016-1:  
SIZE: 1M/10PCS SIZE: 1.5M/10PCS



■K16XLQC026-3

PE FOOTBALL NET FOR 5 PLAYERS

■K16XLQC026-1

PE FOOTBALL NET FOR 7 PLAYERS

■K16XLQC026-2

PE FOOTBALL NET FOR 11 PLAYERS





■ K16XLQC001

AGILITY TRAINING KIT--PRIMARY LEVEL

AGILITY TRAINING LADDERS	K16XLQC011-2	2PCS
SAFETY INFLATOR		1PC
AGILITY POLE(WITH BASE)	K16XLQC015	5PCS
AGILITY CONE	K16XLQC017	10PCS
DISK MARKER	K16XLQC003 or K16XLQC009	50PCS
TRAINING HURDLES	K16XLQC013	5PCS



■ K16XLQC002

AGILITY TRAINING KIT--ADVANCED LEVEL

AGILITY TRAINING LADDERS	K16XLQC011-2	2PCS
SAFETY INFLATOR		1PC
AGILITY POLE(WITH BASE)	K16XLQC015	5PCS
DISK MARKER	K16XLQC003 or K16XLQC009	50PCS
AGILITY CONE	K16XLQC017	10PCS
DRAG PARACHUTE	K16XLQC021	2PCS



225-278



### INDOOR

Mid-sole: RB Outsole: RB  
Hardness:  
Mid-sole: 55±2 Shore A Outsole: 70±2 Shore A

#### FUNCTION:

The outsole is made of natural rubber. It adopts a variety of mechanical anti-skid texture designs,



### INDOOR **NEW**

Mid-sole: EVA Outsole: RB  
Hardness:  
Mid-sole: 51±2 Shore A Outsole: 70±2 Shore A

#### FUNCTION:

The outsole is made of natural rubber. It adopts a variety of mechanical anti-skid texture designs, adds a slewing zone design, and is equipped with a midsole with EVA cushioning, which is more lightweight and comfortable.



### INDOOR

Mid-sole: EVA Outsole: RB  
Hardness:  
Mid-sole: 51±2 Shore A Outsole: 70±2 Shore A

#### FUNCTION:

The outsole is made of natural rubber. It adopts a variety of mechanical anti-skid texture designs, adds a slewing zone design, and is equipped with a midsole with EVA cushioning, which is more lightweight and comfortable. Athletes can quickly and stably turn and complete various action needs. With the mid-sole with EVA cushioning, it is more lightweight and comfortable.



### MG(MULTI-GROUND) ARTIFICIAL GLASS

Outsole: TPU Hardness: Outsole 95°±3

#### FUNCTION:

Lightweight TPU outsole 27 round studs design based on ergonomics; Lightweight, comfortable, and stable. Waist with 3D support bar for energy locking. Best option for artificial turf competitions.



### MG(MULTI-GROUND) ARTIFICIAL GLASS

Outsole: TPU Hardness: Outsole 95°±3

#### FUNCTION:

KELME MG 2.0 (Multi ground). Lightweight TPU outsole; Fore-foot features triangular studs for traction; Round studs at the rear to improve stability; Highly recommended for various levels of artificial turf grounds.



### MG(MULTI-GROUND) **NEW** ARTIFICIAL GLASS

Outsole: TPU Hardness: Outsole 95°±3

#### FUNCTION:

KELME MG 3.0 (Multi ground) Lightweight TPU Outsole. 23 round studs spread through the entire outsole. Particularly suitable for the new generation of artificial turf grounds.



## TURF--ARTIFICIAL GRASS

Outsole: RB  
Hardness: 70±2 Shore A

### FUNCTION:

The outsole is made of natural rubber. It adopts ergonomic three-dimensional triangular texture and the distribution of focus points is balanced. It can complete ordinary steering and easily adapt to various movement needs.



ESTROBEL



Hardness:  
Kids: 65±2  
Adults: 70±2



K-FLEX



ULTRA GRIP



## TURF--ARTIFICIAL GRASS

Outsole: RB  
Hardness: 70±2 Shore A

### FUNCTION:

The outsole is made of natural rubber and consists of cylindrical nails and triangular nails. The design of the slewing area is added to enhance the athlete's energy recovery after sharp turns.



ESTROBEL



Hardness:  
Kids: 65±2  
Adults: 70±2



K-FLEX



ULTRA GRIP



## TURF--ARTIFICIAL GRASS

Mid-sole: EVA Outsole: RB  
Hardness:  
Mid-sole: 51±2 Shore A Outsole: 78±2 Shore A

### FUNCTION:

The outsole is made of natural rubber. It adopts ergonomic three-dimensional triangular texture, and the distribution of focus points is balanced. With the mid-sole with EVA cushioning, it is more lightweight and comfortable. Athletes can quickly and steadily turn and complete various movement needs.



ESTROBEL



Hardness:  
Kids: 65±2  
Adults: 70±2



K-FLEX



ULTRA GRIP



Neutral  
Cushioning



## TURF - ARTIFICIAL GRASS NEW

Outsole: TPU  
Hardness: Outsole 95°±3

### FUNCTION:

Natural rubber outsole with round studs accommodating a wider range of foot pressure distribution, ensuring balance. Support beginners to complete simple technical movements during training.



ESTROBEL



Hardness:  
Kids: 65±  
Adults: 70±



K-FLEX



ULTRA GRIP



Neutral  
Cushioning



## TURF - ARTIFICIAL GRASS NEW

Mid-sole: EVA Outsole: RB  
Hardness: Mid-sole 55°±2 Outsole 78°±2

### FUNCTION:

Natural rubber outsole with round studs configuration adapting to various artificial turf grounds. Pattern inspired from the city layout of Barcelona. Midsole: KELME "SHUA" supercritical foam, lightweight and comfortable. waist-implanted carbon fiber plate to strengthen resistance against torsion.



ESTROBEL



Hardness:  
Kids: 65±  
Adults: 70±



K-FLEX



ULTRA GRIP



Neutral  
Cushioning



## TURF - ARTIFICIAL GRASS

Mid-sole: SHUA Outsole: RB  
Hardness: Mid-sole 55°±2 Outsole 78°±2

### FUNCTION:

Natural rubber outsole with studs in a layout of "K" only on the fore-foot & rear parts to lighten the weight. Midsole: supercritical foam.



ESTROBEL



Hardness:  
Kids: 65±  
Adults: 70±



K-FLEX



ULTRA GRIP



Neutral  
Cushioning



### FG(FIRM GROUND) ESPECIALLY FOR NATURAL GRASS

Outsole: TPU  
Hardness: 95±3 Shore A outsole

#### FUNCTION:

The outsole is made of lightweight TPU material. According to ergonomic design, it is cast with 7 V-shaped nails in the front and 4 in the back, making it light and comfortable to wear and has strong grip. The mid-waist has a three-dimensional support bar, which can lock the energy in time and make the explosive power more powerful. It is the first choice for artificial grass football matches.



ESTROBEL



Abrasion-Resistance



K-FLEX



ULTRA GRIP



### FG(FIRM GROUND) **NEW**

Outsole: PEBAX Mid-waist: carbon fiber  
Hardness: 71D

#### FUNCTION:

Lightweight Pebax with high rigidity and strong rebound; Mid-waist implanted with carbon fiber plate; Ergonomic design for natural grass field; Forefoot with 7 blade-shaped studs and 4 triangular studs at the rear; Superior grip; Best option for natural grass field matches.



ESTROBEL



Abrasion-Resistance



K-FLEX



ULTRA GRIP



### FG(FIRM GROUND) **NEW**

Outsole: TPU  
Hardness: Outsole 95° ± 3

#### FUNCTION:

Lightweight TPU Outsole. Ergonomic design for natural grass field; Forefoot with 8 studs and 4 at the rear, Enhancing stability for swift stops & turns. Suitable for both training & match on natural grass field.



ESTROBEL



Abrasion-Resistance



K-FLEX



ULTRA GRIP



### AG(ARTIFICIAL GRASS)

Outsole: TPU  
Hardness: 95±3 Shore A outsole

#### FUNCTION:

The outsole is made of lightweight TPU material and is composed of front triangular nails, making it light and comfortable to wear and stable in performance. It is the first choice for artificial grass football matches.



ESTROBEL



Abrasion-Resistance



K-FLEX



ULTRA GRIP



### AG (ARTIFICIAL GRASS)

Outsole: TPU  
Hardness: 95±3 Shore A outsole

#### FUNCTION:

Lightweight TPU Outsole, Combined with starting studs, rotational studs and round studs. Heel counter set externally.



ESTROBEL



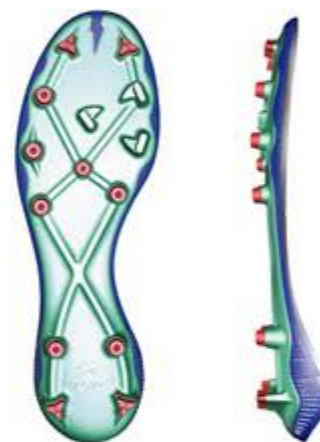
Abrasion-Resistance



K-FLEX



ULTRA GRIP



### SG (SOFT GROUND) PROFESSIONAL

Outsole: PEBAX  
Hardness: 71D  
Types of shoe Studs : detachable steel studs

#### FUNCTION:

Stay tuned for updates.



ESTROBEL



Abrasion-Resistance



K-FLEX



ULTRA GRIP







**Ultra light stretchy microfiber**  
adapts to any foot types  
Soft and comfortable  
Wraps your feet tightly

**Anti-slip lining grips your feet**  
absorbs the sweat Best fitting and breathable

**High-stretchy EVA nakedfit cushioning insole**  
Detachable to wash

**Studs designed for multi-grounds**  
Layout of studs according to ergonomics analysis on the stress points  
Recommend to use for training or grassroots match on natural grass surface  
Works out perfectly for artificial grass pitch

**8312ZX1268  
MEN'S FOOTBALL SHOES(MG)**

**8312ZX3268  
KIDS' FOOTBALL SHOES(MG)**

**Key words:**  
Quality Family Time, Secure Feel  
UPPER: STRETCHY MICROFIBER  
OUTSOLE: TPU

**MEN:** SIZE:40-45  
**KIDS:** SIZE:32-39



105  
White/Green



339  
Pale Green



**Breathable laser-cut holes**  
Breathable and comfortable environment for sports

**Heel protection**  
Reinforced counter provides better lockdown in the heel

**Material splicing**  
Toecap with raised wave bones uptake technology providing the best support to the soft Kangaroo leather increase the traction when you touch and control the ball  
Stretchy microfiber on back counter

**Studs designed for multi-grounds**  
Layout of studs according to ergonomics analysis on the stress points  
Recommend to use for training or grassroots match on natural grass surface  
Works out perfectly for artificial grass pitch

**High-stretchy EVA nakedfit cushioning insole**  
Detachable to wash

**8322ZX1120  
MEN'S FOOTBALL SHOES(MG)**

**Key words:**  
Kangaroo Leather  
UPPER:MICROFIBER +KANGAROO LEATHER+FLYKNIT  
OUTSOLE: TPU  
Upper with Kangaroo Leather and wave bones uptake support  
Midsole with anti-torsion insert

**MEN:** SIZE:39-45



807  
Bright Orange



521  
Space Dye Purple



100  
White



**Integrated Tongue Design**

The sock cover design conforms to the foot surface, the comfortable fabric design enhances breathability. The soft material improves the sensation on the instep while effectively reducing friction and injuries.

**Breathable Leather Lining**

The breathable leather lining prevents slipping due to sweat, providing a comfortable and ventilated fit.

**Built-in Reinforced TPU Heel Cup**

Secured the heel and provided support and protection.

**Upper made of Genuine Leather + Microfiber**

The front 3/4 portion is crafted from high-quality genuine leather, combined with elastic superfiber on the back heel, providing a soft and comfortable foot feel.

**New MG stud design**

Lightweight, strong grip, promotes stability and support, facilitates quick directional changes, and provides knee protection. Suitable for the majority of artificial turf fields in China.

**K-Skeleton Support Design**

The upper's skeleton adhesive layer promotes contact and support between the foot and the upper, enhancing friction.



**One-piece sock design**

The one-piece knitted tongue sock is designed to tightly fit and adhere to the shoe upper.

**Rear lining fabric**

Made of suede microfiber lining fabric, soft, comfortable, and anti-slip.

**Inbuilt rear cup**

Built-in protective cup to protect the heel, the noticeable inward curve of the heel conforms to ergonomic design, fitting the heel during the game.

**Lightweight TPU film material**

The shoe upper is coated with a thin and flexible rubber-plastic material. The raised structure design on the upper enhances the friction, providing a natural fit, resulting in improved ball touch sensation.

**MG stud design**

The new MG stud design is lightweight, provides excellent traction, promotes stable support, facilitates quick changes in direction, and provides knee protection. It is suitable for the majority of artificial turf surfaces in China.



**8422ZX1629  
MEN'S FOOTBALL SHOES(MG)**

UPPER: CALFSKIN LEATHER  
OUTSOLE: TPU

MEN:  
SIZE:39-45



6004  
Coralline Orange



378  
Mint Green/  
Light Blue



162  
White/Blue



404  
Sky Blue

**8422ZX1609  
MEN'S FOOTBALL SHOES(MG)**

UPPER:TPU  
OUTSOLE: TPU

MEN:  
SIZE:39-45



202  
Light Gray



162  
White/Blue



404  
Sky Blue



**ZX80121057**  
**MEN'S FOOTBALL SHOES(MG)**  
**ZX80123057**  
**KIDS' FOOTBALL SHOES(MG)**

UPPER: FLYKNIT+TPU  
OUTSOLE: TPU

MEN: SIZE:39-46    KIDS: SIZE:35-38



**ZX80121058**  
**MEN'S FOOTBALL SHOES(MG)**  
**ZX80123058**  
**KIDS' FOOTBALL SHOES(MG)**

UPPER: CALFSKIN LEATHER+ MICROFIBER  
OUTSOLE: TPU

MEN: SIZE:39-46    KIDS: SIZE:35-38





**8332ZX1446**  
MEN'S FOOTBALL SHOES(MG)

**8332ZX3446**  
KIDS' FOOTBALL SHOES(MG)

UPPER: TEXTILE+TPU  
OUTSOLE: TPU

SIZE:  
MEN: 40-45 KIDS:32-39



528  
Mint Green



127  
White/Neon Green



807  
Bright Orange



417  
Sapphire Blue



001  
Black/Red



**8322ZX1137**  
MEN'S FOOTBALL SHOES (MG)

Keywords:  
Wrap, Stability,Speed

UPPER: TPU+TEXTILE  
OUTSOLE:TPU

Flyknit upper & high-speed streamline bone improve the visual effect and wrap your feet tightly; Adjustable EVA cushioning insole fits any foot types perfectly and offers protection; MG outsole works well with artificial grass pitch, and it's suitable for both training and matches.

MEN:  
SIZE: 39-45



165  
White/Black/Red



807  
Bright Orange



404  
Sky Blue



Separated tongue adapts to different foot shape

Classical toecap stitching fits your feet well



Streamlined graphic Less is more

Durable rubber outsole hardness: 78°± provides the best traction and grip



**8232ZX1104**  
**MEN'S FOOTBALL SHOES(TF)**

**8232ZX3104**  
**KIDS' FOOTBALL SHOES(TF)**

UPPER:MICROFIBER  
OUTSOLE:RUBBER  
Elastic Microfiber, Soft, Light-weighted, Matching outfit. Best option for training and grassroot match

MEN: SIZE:40-46  
KIDS: SIZE:28-39



355  
Mint Green/White



203  
Gray/Blue



000  
Black



409  
Royal Blue/White



Velcro strap

Kids can easily put on/take off themselves, save the trouble for the parents

Inside lining grips your feet and absorb the sweat. Best fitting and breathable

EVA cushioning insole

Good protection with 4mm high-stretchy EVA cushioning

Breathable mesh upper

Protect your feet from foot fungus

Artificial PU toecap design

Safeguard the kids by giving their toes proper protection while playing

Synthetic PU design on both sides of the shoes provide upper support

Brand new TF outsole design, suitable for kids' daily wear and football training as well



**8322ZX3138**  
**KIDS' FOOTBALL SHOES (TF)**

Keywords:  
Breathable, Velcro strap

UPPER: PU+TEXTILE  
OUTSOLE:RB  
Breathable mesh combined with synthetic PU provide strong upper support; Outsole with studs newly and specially designed for kids.

KIDS:  
SIZE:30-39



959  
Metal Silver/Black



510  
Purple/Black



310  
Apple Green





**Comfortable interior**

Soft and skin-friendly mesh lining provides comfort, breathability, and prevents foot discomfort, allowing children to move freely.

**Velcro design**

Convenient and stable, enhances the sense of wrap and allows for quick adjustments

**Breathable mesh fabric**

Made with high-quality, embossed synthetic leather and combined with soft breathable mesh fabric for a lightweight and comfortable feel

**Inbuilt rear cup**

Built-in protective cup to protect the heel, the noticeable inward curve of the heel conforms to ergonomic design, fitting the heel during the game.

**TF stud design**

The shoe sole is made of rubber material with circular anti-slip studs, providing directional control, stable support, and excellent slip resistance and traction.



**8422ZX3613  
KID'S FOOTBALL SHOES(TF)**

UPPER: MESH FABRIC+SYNTHETIC LEATHER  
OUTSOLE: RUBBER

KIDS SIZE:28-39



162  
White/Blue



378  
Mint Green/Light Blue



404  
Sky Blue



6004  
Coraline Orange



**Comfortable lining**

Soft and breathable mesh lining prevents the feet from feeling stuffy, allowing children to move freely

**Easy-to-use rotating fastener**

Quickly loosening and tightening shoelaces, eliminating concerns about laces coming undone

**Provides heel stability**

The heel is rounded and full, with a curved design that conforms to the ergonomic structure of the foot, providing excellent locking effect

**Breathable mesh fabric**

Made with high-quality, embossed synthetic leather and combined with soft breathable mesh fabric for a lightweight and comfortable feel

**TF stud design**

The shoe sole is made of rubber material with circular anti-slip studs, providing directional control, stable support, and excellent slip resistance and traction.



**8422ZX3644  
KID'S FOOTBALL SHOES(TF)**

UPPER: MESH FABRIC+SYNTHETIC LEATHER  
OUTSOLE: RUBBER

KIDS SIZE:28-39



404  
Sky Blue



000  
Black



152  
White / Light Blue



905  
Neon Red



378  
Mint Green / Light Blue



417  
Sapphire Blue



**871701**  
**MEN'S FOOTBALL SHOES(TF)**  
**873701**  
**KID'S FOOTBALL SHOES(TF)**

Upper: PVC      Outsole: Rubber

MEN:  
SIZE:40-46      KIDS:  
SIZE:28-39



417  
Sapphire Blue



907  
Neon Orange



000  
Black



905  
Neon Yellow



110  
White/Sapphire Blue



170  
White/Fresh Green



611  
Red/Black



986  
Neon Yellow/Blue



430  
Bright Blue/Dark Blue

**ZX80011017**  
**MEN'S FOOTBALL SHOES (TF)**

UPPER: CALFSKIN LEATHER  
OUTSOLE: MD+RUBBER

SIZE:39-45



003  
Black/White



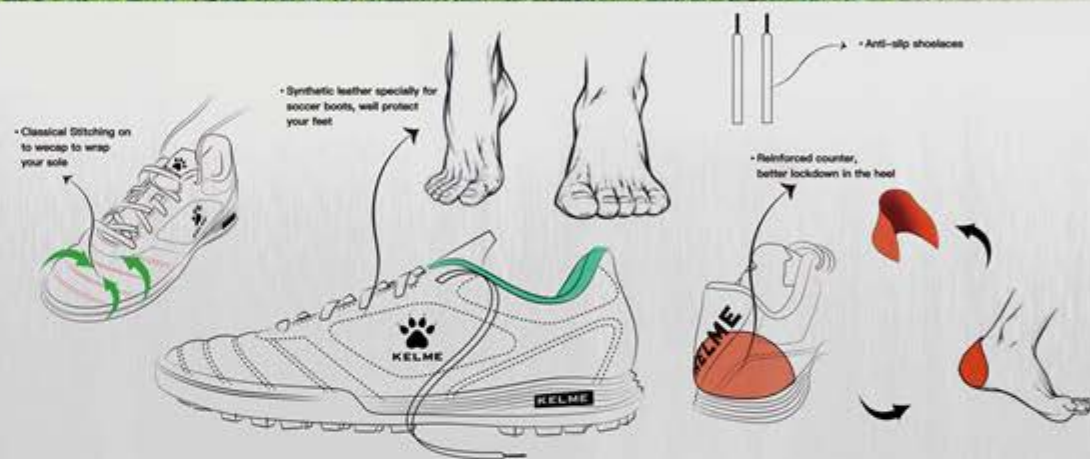
107  
White/Red



417  
Sapphire Blue

Wonderful future starts  
from this step!

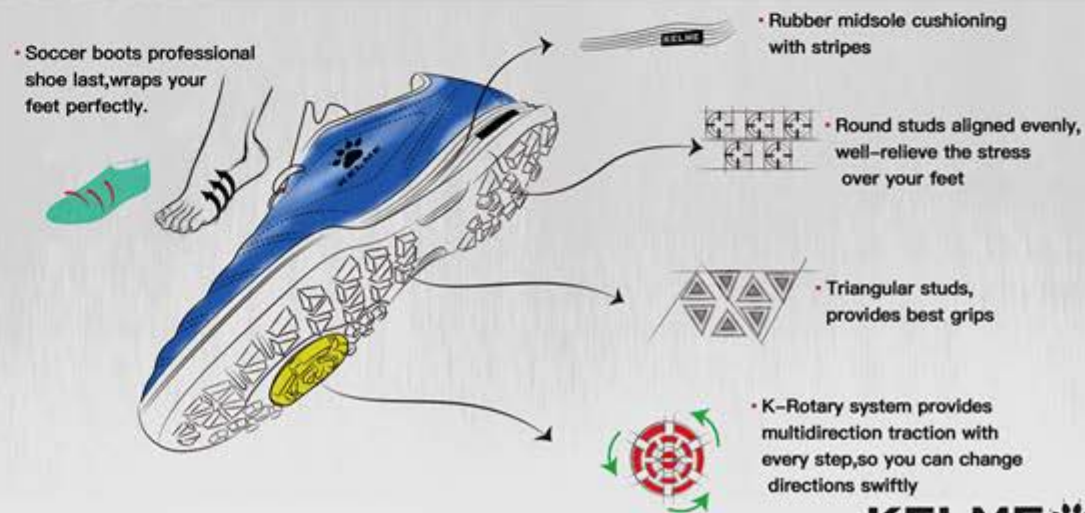
KIDS/WOMENS/MENS



因为专业  
BY PROFESSIONAL FOOTBALL SPECIALISTS



所以放心  
WEAR WITH CONFIDENCE.



KELME

**6893141**  
**KIDS' FOOTBALL SHOES (TF)**

UPPER: SYNTHETIC PU  
OUTSOLE: RUBBER

SIZE:25-32



417  
Sapphire Blue



905  
Neon Yellow



662  
Chinese Red

**6893171**  
**KIDS' FOOTBALL SHOES(TF)**

UPPER:MESH+PU OUTSOLE: RUBBER

KIDS:  
SIZE:28-39



417  
Sapphire Blue



615  
Red/Dark Blue

**6873003**  
**KIDS' FOOTBALL SHOES (TF)**

UPPER: MESH+PVC  
OUTSOLE: RUBBER

SIZE:28-39



417  
Sapphire Blue



170  
White/Fresh Green



907  
Neon Orange



301  
Grass Green



904  
Neon Green



416  
Dark Blue



481  
Royal Sky Blue



000  
Black



### Comfortable Material Splicing

One-third of the shoe upper, located at the toe, adopts a kangaroo leather with skeleton adhesive technology, providing more support to the kangaroo leather and increasing the overall friction of the upper to effectively enhance ball touch and control. While the softening and skin-friendly leather for better foot sensation. The back end of the shoe upper is made of elastic microfiber, making the material splicing comfortable and facilitating powerful movement in the forefoot.

### Integrated Tongue Design

The sock cover design conforms to the foot surface, and the comfortable fabric design enhances breathability. The soft material improves the sensation on the instep while effectively reducing friction and injuries.

### Rear Lining Fabric

Made of suede microfiber lining fabric, soft, comfortable, and anti-slip.

### Breathable Laser-Cut Holes

Bring a breathable and comfortable environment for sports

### Heel Protection

Built-in protective cup to protect the heel, the heel has a noticeable inward curve, conforming to ergonomic design, fitting the heel during the game.

### New TF Stud Design

The new TF design includes the midsole with **Carbon Fiber** technology and an embedded carbon fiber plate in the waist, providing high elasticity, cushioning, and enhanced waist anti-torsion. The full-length nylon midsole plate is lightweight and enhances the resistance to twisting. The outsole features a fragmented stud design, with wear-resistant rubber, making it more suitable for Chinese artificial turf.



### "Shua" High-Elasticity EVA Stabilizing Cushion Insole

Equipped with high-tech, high-elastic and cushioning technology, improving resilience, and the latest one-way anti-slip fabric to enhance stability when doing sports.

## 8422ZX1620 MEN'S FOOTBALL SHOES(TF)

Keywords:  
Classical Retro, Cushioning

UPPER: KANGAROO SKIN  
OUTSOLE: CARBON FIBER

MEN:  
SIZE: 39-45



103  
White/Black



404  
Sky Blue



512  
Dull Purple



### Integrated Tongue Design

The sock cover design conforms to the foot surface, the comfortable fabric design enhances breathability. The soft material improves the sensation on the instep while effectively reducing friction and injuries.

### Upper made of Genuine Leather + Microfiber

The front 3/4 portion is crafted from high-quality genuine leather, combined with elastic superfiber on the back heel, providing a soft and comfortable foot feel.

### Breathable Leather Lining

The breathable leather lining prevents slipping due to sweat, providing a comfortable and ventilated fit.

### Built-in Reinforced TPU Heel Cup

Secured the heel and provided support and protection.

### TF Stud Design

The new TF design includes the midsole with **Carbon Fiber** technology and an embedded carbon fiber plate in the waist, providing high elasticity, cushioning, and enhanced waist anti-torsion. The 3/4-length nylon midsole plate is lightweight and enhances the resistance to twisting. The outsole features a fragmented stud design, with wear-resistant rubber, making it more suitable for Chinese artificial turf.

### K-Skeleton Support Design

The upper's skeleton adhesive layer promotes contact and support between the foot and the upper, enhancing friction.



## 8422ZX1630 MEN'S FOOTBALL SHOES(TF)

Keywords:  
MEN'S FOOTBALL SHOES(TF)

UPPER: CALFSKIN LEATHER  
OUTSOLE: TECHNOLOGY MIDSOLE

MEN:  
SIZE: 39-45



378  
Mint Green/  
Light Blue



404  
Sky Blue



162  
White/Blue



6004  
Coralline Orange

**Upper materials**

Upper with calfskin leather at the toecap and stretchy microfiber at the back gives your the best experience for precise shots



**Heel protection**

Reinforced counter provides better lockdown in the heel

**EVA cushioning midsole**

Midsole with EVA cushioning to protect your knees. Outsole with rubber turf studs works perfectly for shorter artificial grounds

**High-stretchy EVA cushioning insole**

Detachable to wash



**8322ZX1126  
MEN'S FOOTBALL SHOES(TF)**

Keywords:  
Classical Retro, Cushioning

UPPER: MICROFIBER + CALFSKIN LEATHER  
OUTSOLE: RB+MD

MEN:  
SIZE:39-45



328  
Mint Green



267  
Iron Gray/Black



900  
Silver



**8312ZX1261  
MEN'S FOOTBALL SHOES(TF)**

Keywords:  
Supportive, Supersoft, Cushioning

UPPER: MICROFIBER  
OUTSOLE: RB+MD

MEN:  
SIZE:39-45



339  
Pale Green



037  
Black/Golden



118  
White/Purple



Seperate shoe tongue design fits any foot types

**K-Bones**

provides the best support to the upper and stretch of your feet also increase the traction when you control the ball

**EVA cushioning midsole**

Midsole with EVA cushioning to protect your knees. Outsole with rubber turf studs works perfectly for shorter artificial grounds.

**High-stretchy EVA cushioning insole**

Detachable to wash





**8332ZX3481**  
KIDS' FOOTBALL SHOES(TF)

UPPER: TEXTILE+TPU  
OUTSOLE: RB

KIDS SIZE:30-39



127  
White/Neon Green



328  
Mint Green



807  
Bright Orange



001  
Black/Red

**68833134**  
KIDS' FOOTBALL SHOES(TF)

UPPER: PU OUTSOLE: RUBBER

SIZE:28-39



413  
Sapphire Blue/Orange



OUTSOLE



900  
Silver



002  
Black/Royal Blue



170  
White/Fresh Green



417  
Sapphire Blue



000  
Black



611  
Red/Block

**68831124**  
MEN'S FOOTBALL SHOES(TF)

UPPER: MICROFIBER OUTSOLE: RUBBER+MD

SIZE:39-44



000  
Black



417  
Sapphire Blue



611  
Red/Block



OUTSOLE

**7421ZX1213**  
FUTSAL SHOES(IN)

Upper:100% Microfiber  
Midsole:100% MD  
Outsole: 100% Rubber

SIZE:39-45



162  
White/Blue



105  
White/Green

**7421ZX1214**  
FUTSAL SHOES(IN)

Upper:40% Mesh,40% SYNTHET-  
IC,20% TPU  
Midsole:100% MD  
Outsole: 100% Rubber

SIZE:39-45



211  
Light Tan



105  
White/Green



**6891146**  
**MEN'S FUTSAL SHOES (IN)**

UPPER: MICROFIBER  
OUTSOLE: RUBBER+MD

SIZE:39-45



003  
Black/White



103  
White/Black



000  
Black

**68831126**  
**MEN'S FOOTBALL SHOES AG**  
**68833126**  
**KIDS' FOOTBALL SHOES AG**

Upper: PVC      Outsole: TPU

MEN:      KIDS:  
SIZE:40-45      SIZE:32-39



907  
Neon Orange



417  
Sapphire Blue

**6871001**  
**MEN'S FOOTBALL SHOES (AG)**

UPPER: MICROFIBER      OUTSOLE: TPU

SIZE:39-45



103  
White/Black



000  
Black



905  
Neon Yellow

**ZX80011018**  
**MEN'S FOOTBALL SHOES (FG)**

UPPER: CALFSKIN LEATHER  
OUTSOLE: TPU

SIZE:39-45



003  
Black/White



107  
White/Red



417  
Sapphire Blue



**8322ZX1121  
MEN'S FOOTBALL SHOES(FG)**

Key words:  
Kangaroo Leather,  
Flyknit Collar, Firm ground

UPPER: MICROFIBER + KANGAROO LEATHER + FLYKNIT  
OUTSOLE: TPU

Upper with Kangaroo Leather+  
wave bones uptake support

Midsole with nylon anti-torsion insert

MEN:  
SIZE: 39-45



061  
Cool Black



100  
White



**8422ZX1618  
MEN'S FOOTBALL SHOES(AG/FG)**

UPPER: KANGAROO SKIN  
OUTSOLE: FULL LENGTH NYLON MIDSOLE

MEN:  
SIZE: 39-45



162  
White/Blue



404  
Sky Blue



6004  
Coralline Orange





**8323YX5267**  
**MEN'S /WOMEN'S ATHLETIC SHOES**

Keywords:  
Ultralight, Athletics,  
Secure & Protective, Breathable,  
Cushioning

UPPER: TEXTILE+TPU  
OUTSOLE: TPU

MEN:  
SIZE: 35-45



629  
Pink/Sea Blue



103  
White/Black



153  
White/Pink





**8413YX1531**  
MEN'S SPORTS SHOES

**8413YX2531**  
WOMEN'S SPORTS SHOES

UPPER: CALFSKIN LEATHER  
OUTSOLE: TECHNOLOGY MIDSOLE

MEN: SIZE:40-46  
WOMEN: SIZE:35-39



100  
White



000  
Black



**High Elastic Flyknit**

The Flyknit is recreated with stitching method, greatly increases the elasticity of itself, and the upper surface adopts the breathable hole weaving method, making it soft and comfortable to wear in summer.

**Super stretchy tech midsole**

The full-palm rubber sole has super grip ability, and the midsole has strong rebound and cushioning, which enhances the boost and moves forward stably

**PP membrane cut**

PP membrane material can be used to consolidate the mesh structure, help improve the elastic band tension and protect the instep in an all-round way.



**Back: Integrated for easy putting on and taking off**

The back adopts the new molding production process, which has the advantages of high rebound and no deformation, which is convenient for putting on and taking off

**8333YX5172**  
MEN'S /WOMEN'S SPORTS SHOES

UPPER: TEXTILE  
OUTSOLE: MD+RB

SIZE:35-46



100 White



200 Gray



000 Black



061 Cool Black





**HEEL WITH PP SUPPORT**

**Durable & Anti-slip**  
Outsole with targeted rubber spreading  
lightweight and provide traction  
and durability

**Jacquard mesh upper**  
Lightweight and breathable

**6233YX1090  
MEN'S SPORTS SHOES**

**6233YX2090  
WOMEN'S SPORTS SHOES**

UPPER: JACQUARD TEXTILE +TPU  
OUTSOLE: MD+RB

MEN: SIZE:40-46  
WOMEN: SIZE:35-39



000  
Black  
(MEN/WOMEN)



432  
Blue  
(ONLY MEN)



015  
Black/Gray  
(MEN/WOMEN)



514  
Light Purple  
(ONLY WOMEN)



100  
White  
(ONLY WOMEN)



100  
White  
(ONLY MEN)



**Dot Rubber Printing on both sides:**

The sides of the shoe feature a gradient dot printing designed from the front to the back. The dots create a wave-like pattern that spreads from the center towards the front and back, complementing the lines of the outsole and giving the overall appearance a streamlined and dynamic look.

**Supercritical Technological Midsole**

delivering strong rebound and cushioning, enhancing propulsion, and ensuring stability during movement.

The upper adopts customized transparent mesh, providing excellent support while allowing your feet to breathe. The inner side of the mesh is designed with breathable leather support in specific areas, ensuring the strength and support for sports while maintaining overall breathability of the shoe, providing ample comfort for your every step.



**9313YX5114  
MEN'S/WOMEN'S SPORTS SHOES**

Upper: TEXTILE  
Outsole: MD+RB+TPU

Size: 35-46,  
40-46 (Purple/Pink only)



132  
White/Light Blue  
(Men/Women)



135  
White/Apple Green  
(Men/Women)



100  
White  
(Men/Women)



000  
Black  
(Men/Women)



518  
Purple/Pink  
(Men)





Fading rubber printing with dynamic impact

Rubber outsole with grooves provides the best traction to grip the ground, adapts of different kinds of landscape

One-piece jacquard upper  
light-weighted, durable & breathable



### YX80215072 SPORTS SHOES

UPPER: JACQUARD+TPU  
VELOZTECH IP MIDSOLE  
OUTSOLE: MD+RB

SIZE: 35-46



110  
White/Sapphire Blue



100  
White



000  
Black

### YX80125042 MEN'S/WOMEN'S SPORTS SHOES

UPPER: JACQUARD +TPU

OUTSOLE: MD+RB

Size: 35-46



4008  
Dark Blue/Black



003  
Black/White



Nylon insole  
which is torsion-resistant to protect the arches of your feet

Lightweight rubber outsole for traction and durability

Engineered mesh jacquard  
Which is much stronger and flexible than regular mesh. Light-weighted and breathable

Midsole with supercritical foaming molding  
Which is much softer and of higher rebound

### 8215YX5076 MEN'S/WOMEN'S SPORTS SHOES

UPPER: JACQUARD+TPU

IP MIDSOLE

OUTSOLE: RUBBER

MEN:  
SIZE:35-46



PP seamless film  
wraps around your feet and gives you the best protection

MOTIVITY G2 MIDSOLE  
Gives you bounce and Cushioning when you step forward

Engineered mesh jacquard



000  
Black



#### SEAMLESS PP FILM

The eye-protective PP film is seamlessly hot-cut, providing strong protection to the flyknit upper when the shoelaces are pulled.

#### SLIP-ON FLYKNIT

The vamp integrates a flyknit material with a K-shaped logo design, showcasing brand recognition without sacrificing aesthetics. The collar features an elastic ribbed design, making it easier for consumers to put on and take off while ensuring a comfortable fit.

#### WEAR-RESISTANT AND SLIP-RESISTANT

The sole pattern is arranged with claw-like meat cushion elliptical triangles, providing excellent slip resistance and durability, allowing for unrestricted friction anytime and anywhere.

#### SOFT CUSHIONING MIDSOLE

The midsole is made of soft cushioning MD (midsole) material with a linear cutting design, providing a more distinct shock-absorbing visual effect and excellent rebound performance, enhancing comfort.

### 8415YX5207 MEN/WOMEN'S SPORTS SHOES

UPPER: FLYKNIT  
MIDSOLE: MD  
OUTSOLE: RUBBER

MEN:  
SIZE: 35-46



202  
Light Gray



061  
Cool Black



100  
White



171  
Beige



#### BREATHABLE MESH

Light and breathable mesh upper

#### HEEL SUPPORT

TPU heel

#### OUTSOLE DESIGN

Outsole: Comfortable MD+  
Wear-resisting, anti-slip rubber



### 6891570 SPORTS SHOES

UPPER: FLYKNIT+TPU  
OUTSOLE: MD+RUBBER

MEN:  
SIZE: 35-46



061  
Cool Black



201  
Dark Gray



000  
Black



100  
White





Upper

Breathable mesh material gives your feet a comfortable feel, strong heel PP support, eye-protected design and the TPU K logo on the sides makes the whole design simple but classic

Sole

the round and curvy design of the sole feels more soft and comfortable, also soft and lightweight to wear with the EVA lightweight material



8323YX5190  
MEN'S /WOMEN'S SPORTS SHOES

UPPER: TEXTILE+TPU    OUTSOLE: IP

SIZE:35-45



061  
Cool Black



100  
White



Sole

Lightweight outsole  
Lightweight EVA material, and the smooth lines graphic through the outsole provides a sense of speed and streamline.

Upper

Soft mesh upper, breathable and comfortable.Heel with pressed Lycra fabric. Upturned collar enhances the overall sense of layering.



8323YX5192  
MEN'S /WOMEN'S SPORTS SHOES

UPPER:TEXTILE+TPU    OUTSOLE:IP

SIZE:35-45



003  
Black/White



701  
Cream



### 8321LX3130 KIDS' BASKETBALL SHOES

Keywords:  
Cushioning ,Anti-Collision Toe,  
Turning Buckle

UPPER:TEXTILE+TPU  
OUTSOLE:IP+RB

SIZE:32-42



168  
Beige/  
Peacock Blue



814  
Orange Yellow



003  
Black/White



4003  
Royal Blue/  
Neon Pink

### 8321LX3132 KIDS' BASKETBALL SHOES

Keywords:  
Breathable,Classic

UPPER:MICROFIBER  
OUTSOLE:IP+TPR+TPU

SIZE:32-41



610  
Red/White



100  
White



003  
Black/White

### 8321LX3131 KIDS' BASKETBALL SHOES

Keywords:  
Light,Cushioning,Abrasion Resist

UPPER:TEXTILE+MICROFIBER  
OUTSOLE:IP+RB

SIZE:32-42



505  
Lilac



030  
Black/Rainbow



100  
White

### 5211LX3084 KIDS' BASKETBALL SHOES

Keywords:  
Light,Cushioning,Abrasion Resist

UPPER:TEXTILE+TPU  
OUTSOLE:IP+RB

SIZE:33-39



600  
Red



328  
Mint Green



000  
Black

### 8321LX1135 MEN'S BASKETBALL SHOES

Keywords:  
Antislip,wrap,Abrasion Resist

UPPER:MICROFIBER+TEXTILE  
OUTSOLE:MD+RB+TPU

SIZE:39-45



003 Black/White



701 Cream



103 White/Black

### 8321LX1136 MEN'S BASKETBALL SHOES

Keywords:  
Breathable,Wap,Fashion

UPPER:TEXTILE+TPU  
OUTSOLE:MD+RB+TPU

SIZE:39-45



100  
White



405  
Light Blue



352  
Star Mint Green  
/Purple

### 8322XX1156 MEN'S CASUAL SHOES

Top-grain leather  
/Easy slip on/Soft

Upper: top-grain calfskin leather, comfortable & soft.

Midssole: high-quality popcorn strong rebound and cushioning.

Outsole: full rubber, slip-resistant and wear-resistant

For daily outfit and sports activities.

UPPER:CALFSKIN LEATHER+TEXTILE

OUTSOLE:E-TPU+RB

Size:38-45



#### Upper material

The upper material is made of top-grain calfskin leather with clear texture and a strong sense of quality. Breathable and water-repellent. Soft & comfortable. Great durability with high strength against wear and tear.



#### Easy to put on & take off with elastic fastening

Shoelaces are designed with a quick and easy elastic fastening system, allowing for convenient wearing and removal with just one hand. Eyelets on both sides includes TPU components to enhance durability, making it less prone to damage even with long-term pulling.

#### Comfortable outsole

Midssole is made of soft and comfortable popcorn material, providing strong rebound and cushioning. Full rubber outsole is slip-resistant and wear-resistant, suitable for daily wear and sports activities.



000  
Black



## 7325LT5112 SLIPPERS

MATERIAL: EVA

ADULTS AND KIDS:  
SIZE:35-46



105  
White/Green



003  
Black/White

## 8325LT1127 MEN'S SLIPPER

## 8325LT3127 KIDS' SLIPPER

Keywords:

Velcro strap, Detachable midsole,  
MATERIAL:EVA  
(WITHOUT GLUE)

Quality family time Detachable IP midsole  
light-weighted and of high reboundGlue-free,  
Environmental friendly Adjustable mid-foot strap  
fits different foot typesSoft, Relaxed comfortable

MEN: KIDS:  
SIZE:39-45 SIZE:35-38



321  
Light Water Green



243  
Classic Gray



103  
White/Black



Washing Symbol	Rolling-Over Dry Symbol
MAXIMUM 30°C, NORMAL CYCLE	TUMBLE DRY LOW
MAXIMUM 30°C, PERAMENT PRESS CYCLE	TUMBLE DRY MEDIUM
MAXIMUM 30°C, DELICATE CYCLE	DO NOT TUMBLE DRY
MAXIMUM 40°C, NORMAL CYCLE	<b>Ironing Symbol</b>
MAXIMUM 40°C, PERAMENT PRESS CYCLE	IRON MAXIMUM TEMPERATURE OF 110°C
HAND WASH (DO NOT MACHINE WASH)	IRON MAXIMUM TEMPERATURE OF 150°C
DO NOT WASH	IRON MAXIMUM TEMPERATURE OF 200°C
<b>Bleach Symbol</b>	DO NOT IRON
DO NOT CHLORINE BLEACHING	<b>Textile Professional Maintenance Symbol</b>
CHLORINE BLEACHING	DRYCLEANING NORMAL CYCLE
ONLY OXYGENBLEACHING / ONLY NON-CHLORINE BLEACHING	DRYCLEANING MILD CYCLE
<b>Natural Dry Symbol</b>	DO NOT DRYCLEANING
HANG DRY	PROFESSIONAL NORMAL WET CLEANING
HANG AND DRIP DRY	<b>1. COMPRESSION</b>
FLAT DRY	THE CLOTHING USES HIGH ELASTIC FABRIC TO REDUCE THE MOVEMENT OF MUSCLE JITTER AND IMPROVE THE MOVEMENT EFFICIENCY.
FLAT AND DRIP DRY	<b>2. SEMI FITTED</b>
HANG DRY IN THE SHADE	CLOTHING WITH APPROPRIATE ELASTIC FABRIC, CLOTHES FIT THE BODY, EXERCISE MORE FREELY.
FLAT DRY IN THE SHADE	<b>3. REGULAR</b>
	THE USE OF CONVENTIONAL FABRIC, THE FITTING VERSION OF THE DESIGN, COMFORTABLE WEARING, DO NOT AFFECT THE SPORTS EXPERIENCE.

- Waterproof/Windproof/Breathable
- Wind Proof
- Waterproof Breathable
- Water Resistant
- Venting System
- Authentic Fit
- Active Fit
- Stretch
- Lightweight
- 4-way Stretch
- Zip-Off Storm Hood
- Performance Storm Hood
- Waterproof Zipper
- Multifunction Pocket

## SIZE CHART



**JACKET**

SIZE	120	130	140	150	160	S	M	L	XL	2XL	3XL	4XL
B   BACK CENTER LENGTH	46	49	53	56	60	64	66	68	70	72	74	76
P   CHEST	36	39	42	45	48	50	52	54	56	58	60	62



**PANT**

SIZE	120	130	140	150	160	S	M	L	XL	2XL	3XL	4XL
B   LENGTH	69	75	81	87	93	96	98.5	101	103.5	106	108.5	109.5
C   HIP	36	39	42	45	48	50	52	54	56	58	60	61



**BASKETBALL SHIRT**

SIZE	120	130	140	150	160	S	M	L	XL	2XL	3XL	4XL	5XL
B   BACK CENTER LENGTH	57.5	61.5	65.5	69.5	73.5	75	77	79	81	83	85	87	89
P   CHEST	36	39	42	45	48	50	52	54	56	58	60	62	64



**JERSEY**

SIZE	120	130	140	150	160	S	M	L	XL	2XL	3XL
B   BACK CENTER LENGTH	48	52	56	60	64	67	69	71	73	75	77
P   CHEST	35	38	41	44	46	48	50	52	54	56	58



**SHORT**

SIZE	120	130	140	150	160	S	M	L	XL	2XL	3XL
B   LENGTH	28	30.5	33	35.5	38	40	42	44	46	48	50
C   HIP	42	44	46	48	50	52	54	56	58	60	62



**BASKETBALL SHORT**

SIZE	120	130	140	150	160	S	M	L	XL	2XL	3XL	4XL	5XL
B   LENGTH	42	44	46	48	50	52	54	56	58	60	62	64	66
C   HIP	42	45	48	51	54	54	56	58	60	62	64	66	68

### SOCKS SIZES

SOCK	S	32-36
WOMEN	M	35-39
MEN	M	39-41
	L	42-44
	XL	45-48

**ATTENTION:**  
SIZE CHART MAY DIFFER FROM EACH STYLE.  
PLEASE ALWAYS ARRANGE WEARER TRIAL  
BEFORE ANY OFFICIAL ORDER.

## SIZE CONVERSION CHART-FOOTBALL SHOES/SLIPPERS

KIDS								JUNIOR / WOMEN						SENIOR / MEN									
USA	10	11	12	13	13.5	1.5	2	USA	3	4	4.5	5.5	6	USA	7	8	8.5	9	10	10.5	11.5		
UK	9	9.5	10	11	12	12.5	1	UK	2	2.5	3.5	4	5.5	UK	6	7	7.5	8.5	9	10	11		
EUR	28	29	30	31	32	33	34	EUR	35	36	37	38	39	EUR	40	41	42	43	44	45	46		
CHN	190	195	200	205	210	215	220	CHN	225	230	235	240	245	CHN	250	255	260	265	270	275	280		

## SIZE CONVERSION CHART-CASUAL SHOES/SPORTS SHOES

WOMEN								MEN									
USA	3.5	4.5	5.5	6	6.5	7	8	USA	6.5	7	8	8.5	9	9.5	10.5	11	12
UK	1.5	2	3	3.5	4	4.5	5.5	UK	6	6.5	7	7.5	8	8.5	9.5	10	11
EUR	34	35	36	37	37.5	38	39	EUR	39	40	41	42	42.5	43	44	45	46
CHN	215	220	225	230	235	240	245	CHN	245	250	255	260	265	270	275	280	285

## WARM TIPS

**Color:** Due to different lighting, computer display etc., there might be slight color variation between the pictures & real products. Please refer to the real products.

**Size:** Size chart may differ from each style. Please always arrange wearer trial before any official order.

**Washing:** Try to avoid soak or machine washing in order to maintain the function of fabric fibers of sportswear.



## РЕГИОНАЛЬНЫЕ ОФИСЫ

### Контакты:

**Константин Овчинников**

+7 (968) 656 82 19  
ovchinnikov@s-ekip.ru

Москва  
Санкт-Петербург  
Воронеж

**Алексей Шашков**

+7 (903) 001 61 62  
shashkov@s-ekip.ru

Москва

**Роман Рафиков**

+7 (909) 007 27 10  
rafikov@s-ekip.ru

Екатеринбург  
Казань  
Новосибирск  
Самара

**Виктория Гаврусева**

+7 (964) 597-71-59  
gavruseva@s-ekip.ru

Ростов-на-Дону